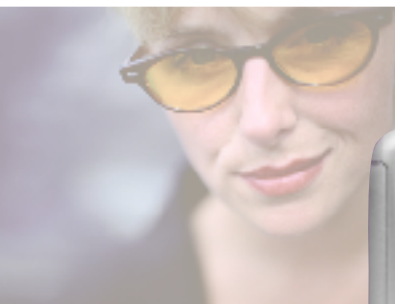




# Gateway DC-T23 digital camera user's guide



Customizing

Troubleshooting

Gateway®



# Contents

<b>Using the Gateway DC-T23</b> .....	<b>1</b>
Warnings and precautions .....	2
Getting started .....	3
Identifying camera components .....	3
Loading the batteries .....	4
Inserting and removing the SD/MMC card (Optional) .....	5
Attaching the strap (optional) .....	6
Using a tripod (optional) .....	7
Basic operation .....	8
Powering on and off .....	8
Setting the Mode switch .....	9
Taking still pictures .....	10
Recording movies .....	12
Viewing your images on the LCD .....	14
Viewing pictures and movies .....	14
Deleting pictures and movies .....	16
Advanced Operations and Settings .....	18
Using the MENU button .....	18
Configuring settings .....	22
Viewing images on your computer .....	24
Installing the camera software .....	24
Connecting the camera to your computer .....	25
Copying pictures and movies to your computer .....	26
Viewing pictures and movies on your computer .....	28
Using PC Camera or Web Cam .....	29
Format settings .....	31
Video settings .....	32
Troubleshooting .....	33
Using the camera .....	33
Connecting the camera to your computer .....	34
Getting Help .....	34
Appendix .....	35
Battery life .....	35
LED indicator events .....	35
Storage capacity .....	36
Specifications .....	36
Regulatory compliance statements .....	38
Notices .....	40

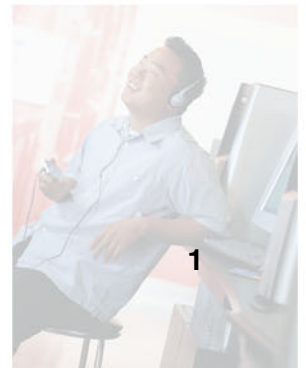
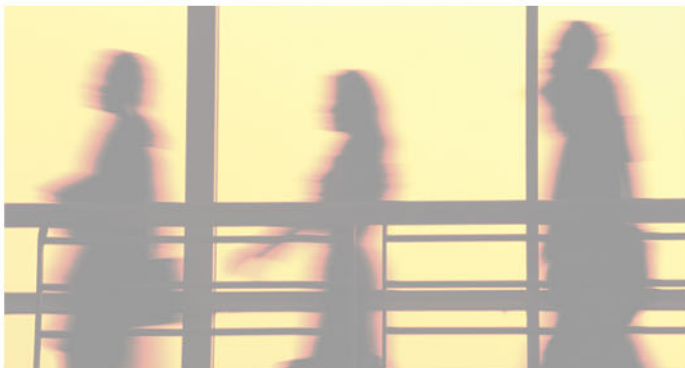




# Using the Gateway DC-T23

Thank you for purchasing the Gateway DC-T23 digital camera. Your camera features:

- Effective sensor resolution of 2 Megapixels
- 16 MB internal memory
- Support for SD/MMC (Secure Digital/MultiMedia Card) memory up to 512 MB
- 4× digital zoom
- Video mode

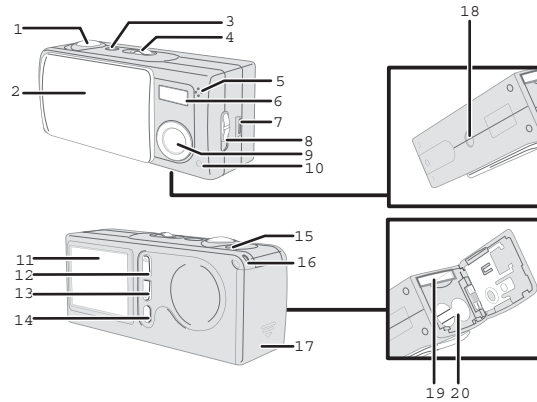


# Warnings and precautions

- Do not drop, puncture or disassemble the camera.
- Avoid all contact with water. Be sure to have dry hands before using.
- Do not expose the camera to high temperature or leave it in direct sunlight.
- Use the camera with care. Avoid pressing hard on the camera body.
- For your own safety, avoid using the camera when there is a storm or lightning.
- Avoid using batteries of different brands or types at the same time.
- Remove batteries during long periods between usage, as deteriorated batteries may affect the functionality of the camera.
- Remove batteries if they show signs of leaking or distortion.
- We suggest using only the accessories supplied by Gateway.

# Getting started

## Identifying camera components



- |                                    |  |
|------------------------------------|--|
| <b>1</b> Shutter/Quick Exit button | <b>11</b> LCD display                    |
| <b>2</b> Lens cover                | <b>12</b> Up control button (Zoom in)    |
| <b>3</b> Power button              | <b>13</b> Down control button (Zoom out) |
| <b>4</b> Mode switch               | <b>14</b> MENU/OK button                 |
| <b>5</b> Microphone                | <b>15</b> LED indicator                  |
| <b>6</b> Flash                     | <b>16</b> Strap holder                   |
| <b>7</b> USB port                  | <b>17</b> Battery/SD/MMC card cover      |
| <b>8</b> Focus switch              | <b>18</b> Tripod port                    |
| <b>9</b> Lens                      | <b>19</b> SD/MMC card slot               |
| <b>10</b> Self-timer LED indicator | <b>20</b> Battery section                |

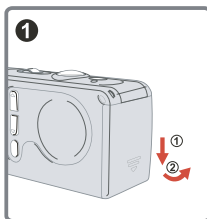
## Loading the batteries

Use two AAA 1.5V alkaline batteries.

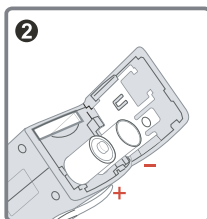


### To load the batteries:

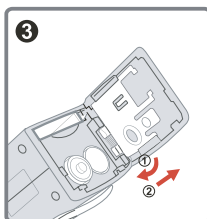
- 1 Slide the battery/card cover down, then rotate it outward.



- 2 Load two AAA alkaline batteries, taking care to match the + and – symbols on the batteries.



- 3 Rotate the battery/card inward, then slide it upward to lock it.



For information on battery life, see [“Battery life” on page 35](#).



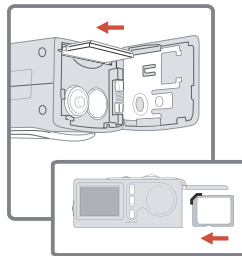
# Inserting and removing the SD/MMC card (Optional)

**Caution**

Never eject the SD/MMC card while the LED indicator is red (the camera is processing data). For more information on the LED messages, see [“LED indicator events” on page 35](#).

## ▶ To insert the SD/MMC card:

- 1 Open the battery/card cover.
- 2 Insert the card in the direction indicated, then push it in.

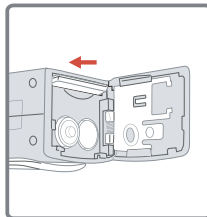


- 3 Close the battery/card cover.



## ▶ To remove the card:

- Push the card in, then release the card.



**Tips & Tricks**



The camera comes with 16 MB internal Flash memory for storage. If you do not insert a SD/MMC card, data is saved in the built-in Flash memory.

For details on the storage capacity of the SD/MMC card and internal memory (16 MB Flash memory), see [“Storage capacity” on page 36](#).

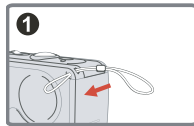
## Attaching the strap (optional)

For convenience and safety, attach the carrying strap.

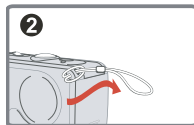


### To attach the strap:

- 1 Thread the strap loop through the holder in the direction indicated.



- 2 Fasten the strap as indicated.



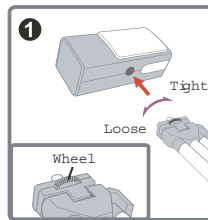
## Using a tripod (optional)

You can use a tripod to minimize camera movement and ensure optimal image quality, particularly while taking self-portraits, longer movies or in macro mode.

Tripod “heads” (the part that attaches to the camera) vary. See your tripod user’s guide for detailed information on attaching your tripod to the Gateway DC-T23 digital camera.

### To use a tripod:

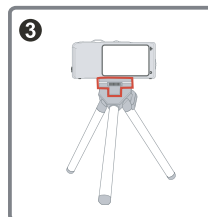
- 1 Attach the tripod to the port on the bottom of the camera and rotate the wheel to lock it.



- 2 Unfold the legs to set up.



- 3 Adjust the alignment to the desired position.



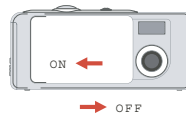
# Basic operation

## Powering on and off

Slide the Lens cover or press the Power button to power the camera on or off.

### To use the lens cover:

- Slide the Lens cover in the direction of the arrow to turn the power on or off.



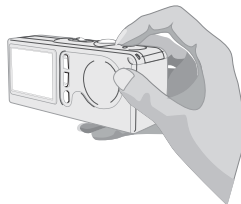
### Tips & Tricks



While the Lens cover is open, you can also press the Power button to turn off your camera.

### To use the power button:

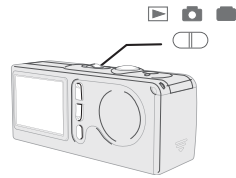
- Press the Power button to turn the power on or off.



If the camera is idle for over 60 seconds, the LCD display turns off to conserve battery power. Press any key to wake up the camera. If the camera is idle for over 3 minutes, the camera automatically powers down.

## Setting the Mode switch

This camera operates in three modes. Push the Mode switch to select the mode that you want to use.



Movie mode



Still Picture mode




Playback mode

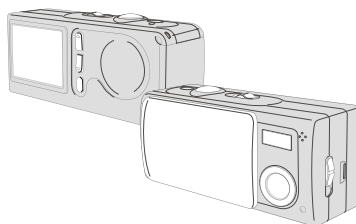
## Taking still pictures

Follow these steps to take still pictures. For best results, use the Focus switch to set the focus and use the up and down Control buttons to zoom in and out.

### Taking a still picture

#### To take a still picture:

- 1 Set the Mode switch to .



- 2 Press the Shutter button to take pictures.



#### Tips & Tricks



While the LED indicator is flashing red, the image is being captured. When the LED turns green, the picture processing is done and ready to take another picture. For more information on LED messages, see [“LED indicator events” on page 35](#)

## Adjusting the focus

### ▶ To adjust the focus:

- Push the Focus switch, then select the best mode for your picture.



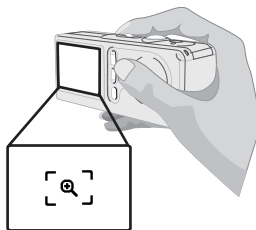
The following table tells you which focus mode you may choose based on the distance to your subject.

	<b>Macro</b>	12 inches ~ 24 inches (30 cm ~ 60 cm)
	<b>Micro</b>	24 inches ~ ∞ (60 inches ~ ∞)


## Using Zoom

### ▶ To Zoom in and out:

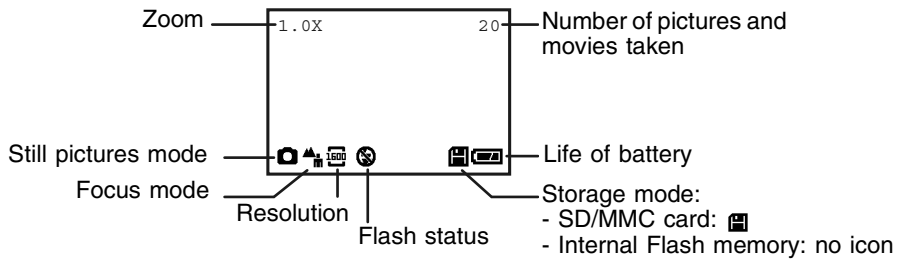
- Press the up Control button to zoom in or the down Control button to zoom out.



## Using the flash and self-timer

The flash and self-timer are convenient utilities you can use when taking still image pictures. Use the flash if lighting is not adequate and the self-timer function for taking self-portrait photos. There are other settings in the MENU under  mode that also affect your images, including size, exposure, white balance, and effect. For details on operation and information, see [“Using the MENU button” on page 18.](#)

## Using the LCD under mode



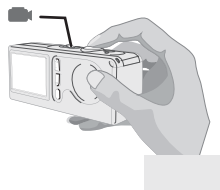
## Recording movies

You can use your camera to record movies at a resolution of 320×240 pixels.



### To record movies:

- 1 Set the **Mode** switch to .






- 2 Press the **Shutter** button to start recording.
- 3 Press the **Shutter** button again to stop the recording.

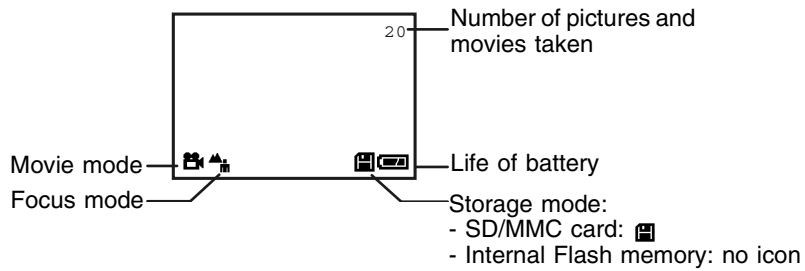


**Tips & Tricks**



You can also adjust the **Focus** switch under  mode. For more information on the **Focus** switch, see [“Adjusting the focus” on page 11](#).


**Using the LCD under  mode**

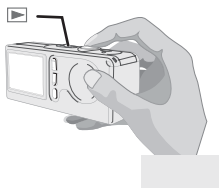



# Viewing your images on the LCD

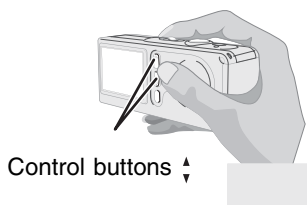
## Viewing pictures and movies

### To view pictures and movies:

- 1 Set the Mode switch to .

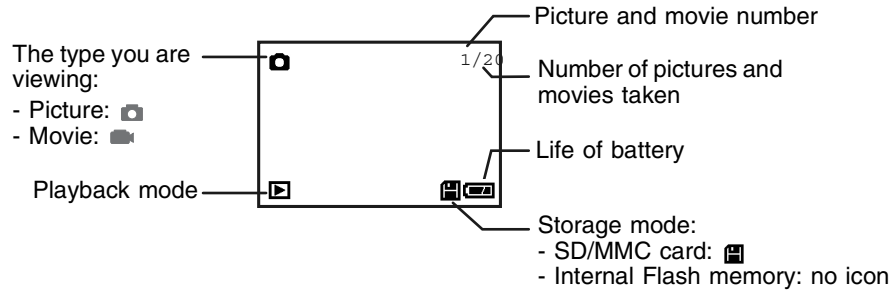


- 2 The last image taken is displayed on the LCD.
- 3 Press the up and down Control buttons  to select the previous or the next image and view it on the LCD display.



While playing a movie on the camera, sound playback is not available. To view the movie with sound, copy the movie to your computer (for details, see [“Viewing images on your computer” on page 24](#)).

## Using the LCD under mode

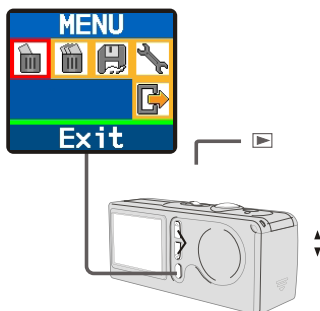


## Deleting pictures and movies

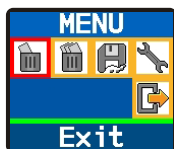
Follow these steps if you want to delete a picture or movie.

### To delete pictures and movies:

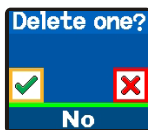
- 1 Push the Mode switch to , then press the up and down Control buttons  to pick the image you want to delete.



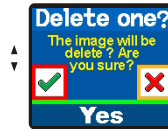
- 2 Press the MENU/OK button to enter the Menu.



- 3 Press the up and down Control buttons  to choose **Delete One**, then press the MENU/OK button.



- 4 Use the up and down Control buttons  $\updownarrow$  to select **Yes**, then press the MENU/OK button to complete the deletion.



#### Tips & Tricks



You can press the Shutter/Quick Exit button at anytime to exit the Menu.


# Advanced Operations and Settings











## Using the MENU button












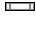



You can fine-tune the camera using advanced features in the Menu. Use the MENU/OK button to enter the Menu. Press the up and down Control buttons (↑) to highlight the item. Use the MENU/OK button to confirm. To exit, use the Shutter/Quick Exit button.

### Menu under (📷) mode

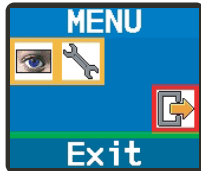




- The MENU/OK button is used to enter the Menu or execute an action.
- Select the  icon or press the Shutter/Quick Exit button to exit.

Item	Option	Icon		Description
		Menu	LCD Display	
1. Size	2048×1536			Size lets you change the resolution of the picture. Select 1600×1200 or 2048×1536 when you want to print 4×6 photos; select 1280×960 when you want to print 3×5 photos.
	1600×1200			
	1280×960			
2. Flash	Auto			Flash lets you set the flash. When you are not sure if the light is adequate, select the <b>Auto</b> mode. The flash will fire automatically if more light is needed. If you have problems when using the flash, see <a href="#">“Troubleshooting” on page 33</a> .
	Off			

Item	Option	Icon		Description
		Menu	LCD Display	
3. Self-Timer	On			Self-Timer lets you specify a delay of 10 seconds before the shutter fires. If you want to use the self-timer, set the <b>On</b> mode, press the Shutter button, then wait for 10 seconds with Self-Timer LED indicator flashing red.
	Off		N/A	
4. Exposure	Auto		N/A	Exposure lets you set the exposure- metering mode. When you are not sure about your light source or when your subject is facing the light, select <b>Auto</b> . When your subject is against the light, select the <b>Back Light</b> mode.
	Back Light			
5. White Balance (WB)	Auto		N/A	White Balance lets you set the camera's color temperature based on your lighting environment. If you know the color conditions of your shooting environment, such as the <b>Sunny</b> (bright), <b>Cloudy</b> (dim), <b>Fluorescent</b> (high color condition) and <b>Tungsten</b> (low color condition) situations, select the mode you consider most appropriate. Select the <b>Auto</b> mode if you are not sure about the color condition of your environment.
	Sunny			
	Cloudy			
	Fluorescent			
	Tungsten			

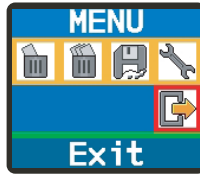
## Menu under ( ) mode



Item	Option	Icon		Description
		Menu	LCD Display	
1. Effect	Normal		N/A	Effect lets you set the effect of the image, such as <b>Normal</b> (no effect) and <b>B&amp;W</b> (black and white) effects.
	B&W			
2. Setting	See <a href="#">"Configuring settings"</a> on page 22 for details.			




## Menu under (▶) mode

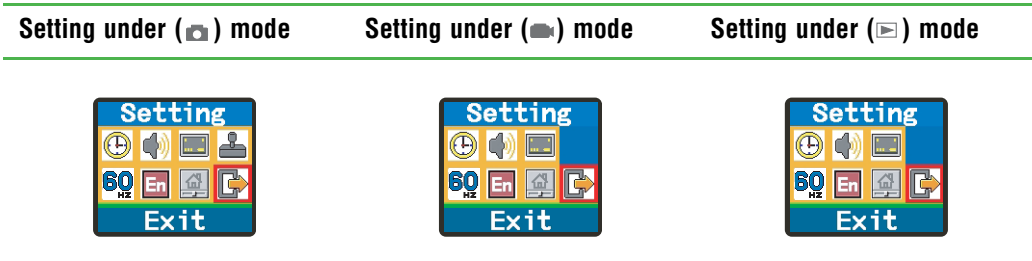


Item	Option	Icon		Description
		Menu	LCD Display	
1. Delete One	Yes	✓	N/A	Delete One deletes a picture or a movie stored in your built-in Flash memory or SD/MMC card.
	No	✗		
2. Delete All	Yes	✓	N/A	Delete All deletes all files stored in your built-in Flash memory or SD/MMC card.
	No	✗		
3. Format	Yes	✓	N/A	Format deletes all files stored in your internal Flash memory or SD/MMC card and the memory is formatted. All stored files will be deleted and cannot be restored.
	No	✗		
4. Setting	See <a href="#">"Configuring settings"</a> on page 22 for details.			







# Configuring settings







Highlight the  icon with the up and down Control buttons (↕) in the Menu to configure settings.

The following illustrations are the **Setting** displays under the three modes.



The following table describes all items in the **Setting** menu:

Item	Option	Icon	Function
1. Time	Year	N/A	Time lets you set the time of the camera. Use the up and down Control buttons (↕) to change the number of settings. Press the MENU/OK button to confirm.
	Month		
	Day		
	Hour		
	Minute		
2. Beep	On		Beep determines whether the beep is active when operating the camera.
	Off		
3. Display	On		Display determines if the small icons appear on the LCD screen.
	Off		
4. Date Stamp	On		Date stamp determines if a date stamp appears on the pictures taken.
	Off		

Item	Option	Icon	Function
5. Flicker	50 HZ		Flicker lets you set the flicker to prevent noise and get the best image. The default flicker value of 60 HZ is best for most lighting conditions. If you experience issues, try another setting.
	60 HZ		
6. Language	English		Language lets you set the camera's displayed language.
	German		
7. Default	Yes		Default lets you set the camera settings back to the original factory default.
	No		

# Viewing images on your computer

Install the camera software before connecting the camera to your computer for the first time. Use the following steps to complete the installation.

## Installing the camera software

### To install the camera software:

**1** Turn on your computer.

#### Important



- Do not connect the USB cable to your computer.
- Close other applications that are running on your computer.

**2** Place the camera software CD into the CD or DVD drive. If the program starts automatically, go to Step 4.

- OR -

If the program does not start automatically, go to Step 3.

**3** Click **Start, My Computer** (or double-click the **My Computer** icon on your desktop), then double-click your CD or DVD drive letter.



**4** Click **USB Driver**. The driver installation begins.

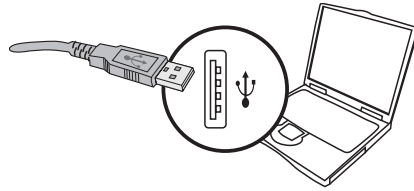
**5** Complete the driver installation by following the on-screen instructions.



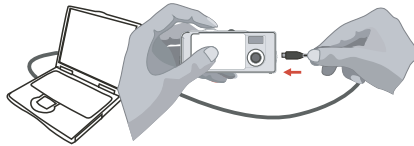
# Connecting the camera to your computer

## ▶ To connect the camera to your computer:

- 1 Turn on your computer.
- 2 Set the Mode switch on the camera to  or .
- 3 Insert the USB cable to the USB port on your computer.





- 4 Insert the other end of the USB cable to the USB port on your camera.



### Important



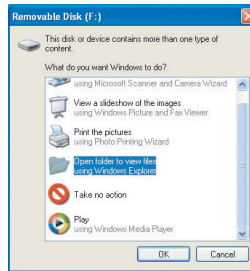
### Disconnecting the camera from the computer in Windows 2000 or Windows ME

To disconnect the camera from the computer, double-click the  icon on the Task Bar, click  (USB Disk), then click Stop. Follow the on-screen instructions.

# Copying pictures and movies to your computer

## ▶ To copy pictures and movies to your computer:

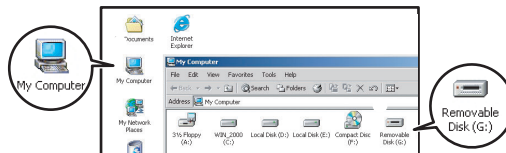
- 1 If you are using Windows XP, after you connect your camera to the computer, the *Removable Disk* window opens. Click **Open folder to view files using Windows Explorer**, click **OK**, then go to Step 3.



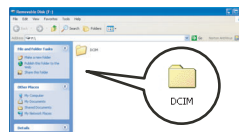
- OR -

If you are using Windows 2000 or Windows ME, go to the next step.

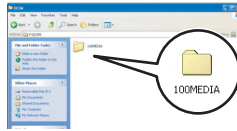
- 2 Double-click **My Computer**, then double-click the **Removable Disk** icon.



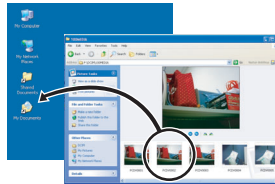
- 3 Double-click the **DCIM** folder.



4 Double-click the **100MEDIA** folder.



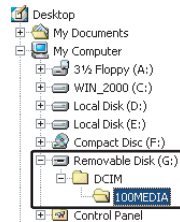
5 To copy the pictures or movies from your camera, drag the files from the camera's folder to the **My Documents** folder on your computer.



### Tips & Tricks



The following illustration shows the storage position of your camera's pictures and movies.



# Viewing pictures and movies on your computer

## To view pictures and movies on your computer:

- 1 Double-click the My Documents folder.



- 2 Double-click the file you want to view.



### **Tips & Tricks**



You must have DirectX 8.0 or higher to view movies.



# Using PC Camera or Web Cam

The PC Camera or Web Cam software lets you record still images and video while the camera is connected to the computer. When using your camera in this mode the camera receives power from your computer and will not consume battery life.

You can also use your camera with other video conferencing applications, such as Microsoft Messenger with video chat, or Netmeeting.


## Important



You need to install the DC-T23 camera software before you can use PC Camera. For instructions on installing your camera software, see [“Installing the camera software” on page 24](#).



## To use PC Camera:

- 1** Set the **Mode** switch on your camera to  and slide the lens cover open.
- 2** Connect the camera to your computer. For instructions on connecting your camera, see [“Connecting the camera to your computer” on page 25](#).
- 3** Click **Start, All Programs, DC-T23**, then click **DC-T23**. The *PC Camera* window opens.

- 4 Click the icons at the bottom of the PC Camera window to use the functions.



\* For detailed information on the Format and Video settings, see “Format settings” on page 31 or “Video settings” on page 32.



### Tips & Tricks



To view your pictures and movies using the *PC Camera* interface, click **Open Album**, then browse to the following folder: C:\Program Files\DC-T23\Work Temp

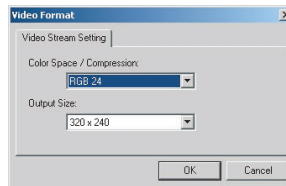
## Format settings

Click the **Format settings** icon on the *PC Camera* window to bring up advanced settings.

### Color Space/Compression

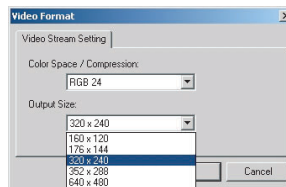
Select one of the following settings:

- **RGB 24** – Lower compression with better image quality. Files are larger and take longer to send to others.
- **I420** – Higher compression with lower image quality. Files are smaller and can be sent to others much more quickly.



### Output size

Set the output size to change the size of the preview window. The default size is **320x240**. Select larger pixels when you need a larger preview window.

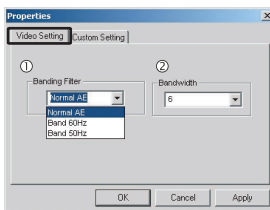


## Video settings

Click the **Video settings** icon on the *PC Camera* window to bring up advanced settings.

### Banding Filter

If your computer screen flickers when using the PC Camera function, change the **Banding Filter** item on the **Video Setting** tab. Select **50 Hz** or **60 Hz** until the screen stops flickering. If you want to restore the default setting, select **Normal AE**.

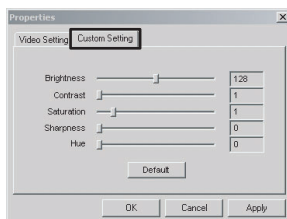


### Bandwidth

If the controller does not have enough bandwidth available for the camera, set the **Bandwidth** item on the **Video Setting** tab. The camera uses less bandwidth as you decrease the bandwidth value.


### Custom settings

You can use the default settings or change the settings for brightness, contrast, saturation, sharpness, and hue manually.



# Troubleshooting

## Using the camera

Problem	Solution
The camera has no power.	<ol style="list-style-type: none"> <li>1 The batteries may be out of power. Replace the batteries.</li> <li>2 Make sure that the batteries are installed correctly.</li> </ol>
Cannot power on my camera even though batteries are installed.	<ol style="list-style-type: none"> <li>1 Make sure that the batteries are installed correctly.</li> <li>2 After 3 minutes of camera idle, the camera shuts down automatically. Press the Power button or slide the Lens cover to power on the camera.</li> </ol>
Cannot take pictures and movies when pressing the Shutter button.	<ol style="list-style-type: none"> <li>1 Make sure that the Lens cover is open.</li> <li>2 The storage is full. Free some space of the SD/MMC card or internal Flash memory.</li> <li>3 Check the write-protect switch on the SD/MMC card and make sure it is not set to <b>LOCK</b>.</li> <li>4 If the <b>MEMORY ERROR</b> message shows on the LCD display, format the card.</li> </ol>
I did not delete the picture and movie, but cannot find the data in the SD/MMC card.	Check if your files are stored in the camera's internal Flash memory. If there is a  icon at the right bottom section on the LCD display, you are using the camera with a SD/MMC card. Remove the card to find the data in the internal Flash memory. For details, see <a href="#">"Inserting and removing the SD/MMC card (Optional)"</a> on page 5.
Cannot set the flash to the <b>On</b> mode.	Charging the flash requires more battery power. When the batteries are low, the flash cannot be set to <b>On</b> . Change the batteries.
The image is too blurred.	Adjust the focus. See <a href="#">"Adjusting the focus"</a> on page 11.
The image is too dark.	You may need to take pictures or movies in a place with adequate light or use the flash.

Problem	Solution
Sound playback is not available when viewing the movie on the LCD display.	This situation is normal. If you want to view the movie with sound, copy the movie to your computer, then view it on the computer.
Noise occurs on my camera when viewing the image on the LCD display or on the computer.	Change the Flicker setting. See “ <a href="#">Configuring settings</a> ” on page 22.

## Connecting the camera to your computer

Problem	Solution
The driver installation failed.	<ol style="list-style-type: none"><li>1 Remove the driver and other related programs. Follow the installation steps in this manual to reinstall.</li><li>2 Install the driver before inserting the USB cable.</li></ol>
A conflict with another installed camera or capture device.	If you have another camera or capture device installed, completely remove the camera and its driver from the computer to avoid a driver conflict.
The movie cannot be played on my computer.	Install DirectX 8.0 or higher.
Noise occurs on my computer when using Video Conferencing.	Adjust the Banding Filter. See “ <a href="#">Banding Filter</a> ” on page 32.

## Getting Help

To get support for your camera:

- Visit [www.gateway.com/support](http://www.gateway.com/support) for online and chat support
- Call 1-888-737-6949 Monday-Friday 7 a.m. to 9 p.m. (CST) for telephone support

# Appendix

## Battery life

Condition	Number of Images	Battery life (minutes)
Taking 1600×1200 still pictures (without flash)	650	45*

\*Using alkaline batteries in 25 C, with pictures taken every four seconds.

- Battery life is shortened when taking snapshots at low temperatures, or turning the power on and off repeatedly.

This table is for reference only. Using the flash decreases the number of pictures you can take.

## LED indicator events

Condition	LED color	Status
Status (LED indicator)	Red	Busy (mode change, storage, or capture)
	Green	Ready (waiting for command)
Flash (LED indicator)	Red	Charging flash
	Green	Ready (waiting for command)
Data transformation (LED indicator)	Red	Data transformation
	Green	Ready (waiting for command)
Self-Timer (Self-Timer indicator)	Red (regularly)	Counting
	Red (rapidly)	Capturing the picture

### Caution



Never eject the memory card or remove the batteries while the LED indicator is red.

## Storage capacity

Memory	Still picture			Movie
	2048×1536	1600×1200	1280×960	Maximum recording time
Internal Flash memory (16 MB)	20	30	48	2
SD/MMC card (32 MB)	40	60	96	4
SD/MMC card (64 MB)	80	120	192	8
SD/MMC card (128 MB)	160	240	384	16
SD/MMC card (256 MB)	320	480	768	32
SD/MMC card (512 MB)	640	960	1536	64

This table is for reference only. The actual number of pictures stored may vary up to 30% depending on their resolution and color saturation.

## Specifications

<b>Sensor effective resolution</b>	1600×1200 (2 Megapixels)
<b>Internal memory</b>	Built-in 16 MB SDRAM (buffer) 16 MB Flash memory (storage)
<b>External memory</b>	Built-in SD/MMC slot (maximum: 512 MB)
<b>Digital still camera</b>	JPEG Format 2048×1536 (hardware enhanced), 1600×1200, or 1280×960
<b>Digital video camcorder</b>	Motion JPEG (AVI) Format QVGA (320×240 pixels) / up to 20 fps
<b>Video conferencing</b>	VGA (640×480 pixels) / up to 10 fps QVGA (320×240 pixels) / up to 20 fps
<b>LCD Display</b>	1.5 in. Color TFT LCD
<b>Digital zoom</b>	4× (for still pictures only)
<b>Exposure</b>	Auto/Back light



<b>White balance</b>	Auto/Sunny/Cloudy/Fluorescent/Tungsten
<b>Image effect</b>	4 modes for still pictures 2 modes for videos
<b>Lens</b>	F=3.5, 8.5mm
<b>Self Timer</b>	10 seconds
<b>Interface</b>	USB 1.1 (USB 2.0 compatible)
<b>Power saving</b>	Auto power-off if idle for over 3 minutes
<b>Built-in microphone</b>	Yes
<b>Built-in speakers</b>	No
<b>Built-in flash</b>	Yes
<b>Battery</b>	2× AAA (alkaline recommended)
<b>Dimensions</b>	3.4 × 1.6 × 1.2 in. (86.36 × 40.64 × 30.48 mm)
<b>Supported Operating Systems</b>	Windows XP, Windows ME, Windows 2000 (Windows 98SE driver supplied but not supported.)

# Regulatory compliance statements

## United States of America

### Unintentional emitter per FCC Part 15

This device has been tested and found to comply with the limits for a Class B digital device, pursuant to Part 15 of the FCC rules. These limits are designed to provide reasonable protection against harmful interference in a residential installation. This equipment generates, uses, and can radiate radio frequency energy and, if not installed and used in accordance with the instructions, may cause harmful interference to radio or television reception. However, there is no guarantee that interference will not occur in a particular installation. If this equipment does cause interference to radio and television reception, which can be determined by turning the equipment off and on, the user is encouraged to try to correct the interference by one or more of the following measures:

- Reorient or relocate the receiving antenna
- Increase the separation between the equipment and receiver
- Connect the equipment to an outlet on a different circuit from that to which the receiver is connected
- Consult the dealer or an experienced radio/TV technician for help.

**Compliance Accessories:** The accessories associated with this equipment are: shielded interface cables that came with your camera or equivalent to those that came with your camera. These accessories are required to be used in order to ensure compliance with FCC rules.

### FCC declaration of conformity

#### Responsible party:

Gateway Companies, Inc.  
610 Gateway Drive, North Sioux City, SD 57049  
(605) 232-2000 Fax: (605) 232-2023

**Product:** Gateway DC-T23

This device complies with Part 15 of the FCC Rules. Operation of this product is subject to the following two conditions: (1) this device may not cause harmful interference, and (2) this device must accept any interference received, including interference that may cause undesired operation.

#### Caution



Changes or modifications not expressly approved by Gateway could void the FCC compliance and negate your authority to operate the product.

## Canada

### Industry Canada (IC) Unintentional emitter per ICES-003

This digital apparatus does not exceed the Class B limits for radio noise emissions from digital apparatus as set out in the radio interference regulations of Industry Canada.

Le présent appareil numérique n'émet pas de bruits radioélectriques dépassant les limites applicables aux appareils numériques de Classe B prescrites dans le règlement sur le brouillage radioélectrique édicté par Industrie Canada.

## Mexico

### Unintentional emitter

At this time there are no mandatory requirements for Unintentional Emitters. However, this device does comply with multiple requirements for other countries and regions as listed on the system label and in the user's manual.

## California Proposition 65 Warning

### Warning



This product contains chemicals, including lead, known to the State of California to cause cancer and/or birth defects or reproductive harm.

# Notices

Copyright © 2003 Gateway, Inc.  
All Rights Reserved  
14303 Gateway Place  
Poway, CA 92064 USA

## All Rights Reserved

This publication is protected by copyright and all rights are reserved. No part of it may be reproduced or transmitted by any means or in any form, without prior consent in writing from Gateway.

The information in this manual has been carefully checked and is believed to be accurate. However, changes are made periodically. These changes are incorporated in newer publication editions. Gateway may improve and/or change products described in this publication at any time. Due to continuing system improvements, Gateway is not responsible for inaccurate information which may appear in this manual. For the latest product updates, consult the Gateway Web site at [www.gateway.com](http://www.gateway.com). In no event will Gateway be liable for direct, indirect, special, exemplary, incidental, or consequential damages resulting from any defect or omission in this manual, even if advised of the possibility of such damages.

In the interest of continued product development, Gateway reserves the right to make improvements in this manual and the products it describes at any time, without notices or obligation.

## Trademark Acknowledgments

1-800-GATEWAY, ActiveCPR, ALR, AnyKey, black-and-white spot design, CrystalScan, Destination, DestiVu, EZ Pad, EZ Point, Field Mouse, Gateway 2000, Gateway Country, gateway.net, Gateway stylized logo, Perfect Scholar, Solo, TelePath, Vivitron, stylized "G" design, and "You've got a friend in the business" slogan are registered trademarks and black-and-white spotted box logo, GATEWAY, Gateway Astro, Gateway@Work, Gateway Connected touch pad, Gateway Connected music player, Gateway Cyber:)Ware, Gateway Education:)Ware, Gateway Flex Case, Gateway Gaming:)Ware, Gateway GoBack, Gateway Gold, Gateway Learning:)Ware, Gateway Magazine, Gateway Micro Server, Gateway Money:)Ware, Gateway Music:)Ware, Gateway Networking Solutions, Gateway Online Network (O.N.) solution, Gateway Photo:)Ware, Gateway Professional PCs, Gateway Profile, Gateway Solo, green stylized GATEWAY, green stylized Gateway logo, Gateway Teacher:)Ware, Gateway Video:)Ware, HelpSpot, InforManager, Just click it!, Learn@Gateway, Kids Backpack, SERVE-TO-ORDER, Server Watchdog, the Spotted G Gateway Logo and the Spotted G Logo, SpotShop, Spotshop.com, and Your:)Ware are trademarks of Gateway, Inc. Intel, Intel Inside logo, and Pentium are registered trademarks and MMX is a trademark of Intel Corporation. Microsoft, MS, MS-DOS, and Windows are trademarks or registered trademarks of Microsoft Corporation. All other product names mentioned herein are used for identification purposes only, and may be the trademarks or registered trademarks of their respective companies.



MAN DC-T23 DIG CAM GDE R0 10/03



8509560