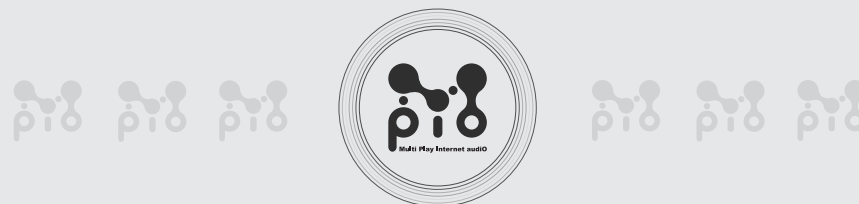


digit@lway

digit@lway

mpio



User's Manual

English

Français

Deutsch

DMG plus

<DMG Plus> User's Manual

Date of Publication : Jan. 2003

Date of First edition : Sep. 2002

Publishing Company : Digitalway Co., LTD.

Address : Korea Design Center, 344-1 Ya'tap 1-dong, Bundang-gu,
Seongnam City, Gyeonggi-do, Korea

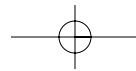
Tel : +82-31-788-7230

Fax : +82-31-788-7240

Homepage : www.digitalway.co.kr / www.mpio.co.kr / www.mpio.com

Date of Manufacture : 2003
Manufactured by Digitalway Co., LTD.
Made in China

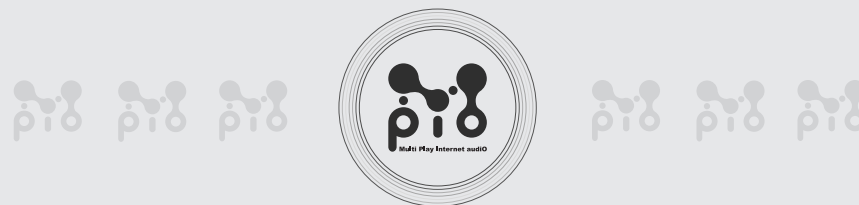
Please read all instructions in this User's Manual before using the player.



digit@lway

digit@lway

mpio



User's Manual

English

Français

Deutsch

DMG plus

<DMG Plus> User's Manual

Date of Publication : Sep. 2002

Date of First edition : Sep. 2002

Publishing Company : Digitalway Co., LTD.

Address : Korea Design Center, 344-1 Ya'tap 1-dong, Bundang-gu,
Seongnam City, Gyeonggi-do, Korea

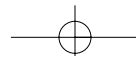
Tel : +82-31-788-7230

Fax : +82-31-788-7240

Homepage : www.digitalway.co.kr / www.mpio.co.kr / www.mpio.com

Date of Manufacture : 2002
Manufactured by Digitalway Co., LTD.
Made in Korea

Please read all instructions in this User's Manual before using the player.

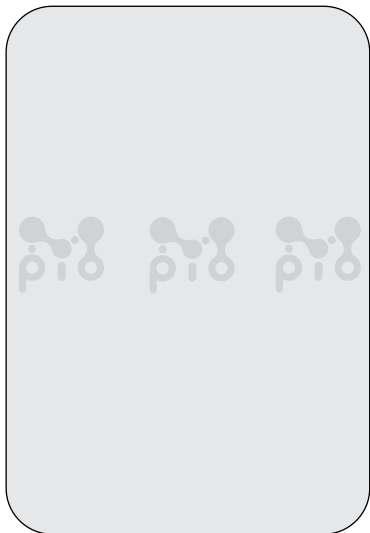




Thanks for your purchasing Digitalway MPIO. This manual provides you with the method of operation and caution. Be sure to read this manual before using this product.
Digitalway will always try to make better product.

What is MPIO?

This means our own brand of Digitalway including MP3 player and other Potable digital audio.



Contents

Chapter 1 Charateristics and Operation Environment of Product

- Characteristics 2
- Specification 4
- Operation Environment 5

Chapter 2 Check point before Using

- Construction of product 6
- Names and function of each parts 7
- LCD 9
- How to use battery 11
- How to use SmartMedia Card 11

Chapter 3 Set up

- Set up Order 12
- Installation of Transmission Software 13
 - In case of Windows 13
 - In case of Macintosh 1 (mpio manager install) 14
 - In case of Macintosh 2 (iTunes 2 plug in install) 15
- Connect PC and Player 16
- Downloading music file from PC 18

Chapter 4 Basic Method of Using Player

- Music file Replay 23
- Voice Recording 24
- Setting up of various functions 24
- How to Use of Memopad 28

Chapter 5 Others

- How to use chargeable battery and alkaline battery 30
- FAQ 32
- Caustions for using MPIO 34

1 Characteristics and Operation Environment of Product

Characteristics

- **Characteristics**
 - Translates file name and ID3 tag information into various languages (Korean, Chinese, Japanese, German, French) and shows them on the large sized LCD. You can hear music and easily check various information such as music title.
- **Compact Size/Realization of small size and light weight**
 - <Size: 67.7(W) x 67.7(H) x 18.5 (D)mm, / Weight: 64g>
Portable everywhere in the quarter size of CD player and the half size of cassette player.
- **Easy Operation by Multi key**
 - Music search, rewind, fast forward can be possible by the key of Joy Stick form in one hand, Various menu set-up also can be changed.
- **256MB embedded memory, providing exterior expansion memory slot**
 - Basically 256MB embedded Flash memory, supporting slot that SmartMedia Card can be equipped. If you equip this SmartMedia Card, the expansion can be possible by 384MB in maximum.
 - High speed data transmission by connecting USB, Data Storage function.
- **Easy computer connection and high speed music data transmission by using USB cable. Since music data as well as normal data can be stored, you can use this as a Data Storage equipment accring to usage.**
- **Folder function**
 - Since music file can be downloaded by file and by folder, various files can be classified by albums and by artists.

- **Provides high performance through earphone of German AV professional company "Sennheiser"**
 - In order to realize high tone quality, 'high performance earphone of Sennheiser' is equipped. You can enjoy ample bass and dynamic sound.
- **Provides high speed rechargeable battery and charger.**
 - In order to use this product economically, high speed charger and Ni-MH rechargeable battery. Continuous replay can be possible for 11 hours in case of rechargeable battery and for 18 hours in case of normal alkaline battery.
- **Voice Recording function**
 - Voice recording can be possible for 18 hours in maximum by embedded microphone (in case of 256MB embedded).



What is MP3?

It is short for MPEG1 AUDIO LAYER 3, and is a digital voice compressed standards established by ISO.

Specification

Model name	DMG plus
Associated format	MP3 (8 ~ 320Kbps)/ WMA (64 ~ 160 Kbps) Bit Rate variable: 0 ~ 100%
Multi language indication	Music name, ID3 tag - supports multi-language and menu in 7 languages
Embedded memory	256 MB flash memory
Expansion memory	SmartMedia Card 3.3V (ID support)
Data Storage	Normal data file can be stored
LCD Indication	FSTN type 3 line LCD 128 x 64 pixel
Back light	Blue Electric Light
Output port	Earphone slot (3.5 mm)
S/N ratio	90 dB
Recording type	G.721 ADPCM type (Extension : WAV)
Maximum recording time	About 18 hours
Max. output level	5 mW + 5 mW
Range of frequency	20 Hz ~ 20 KHz
PC connection	Based on USB (Rev. 1.1)
Transmission speed	About 4.5 Mbps
Power	AA type Nickel-Hydrogen rechargeable battery/ AA type
Continous replay time	Alkaline Charging battery : 11 hours
Size	Alkaline battery : 18 hours
Weight	67.7(W) x 67.7(H) x 18.5(D) mm
Accessories	About 64g (excluded battery) USB cable, earphone(German Sennheiser), Install CD-Rom (MPIO-Manager 2, Real Jukebox, Real player, Real download, Mac I-tune type plug-in: MacOS 9.0~9.2 associated), 1 AA alkaline battery , SMPS form high speed charger, handstrap, Carrying Case.



In the Macintosh MPIO-Manager, folder function cannot be used. We will release the Macintosh MPIO-Manager supporting folder function through our home page.

Operation Environment

- **DOS/ PC**
 - PC : USB interface (Rev.1.1) Standard equipped DOS/V PC
 - CPU : Pentium 133 MHz or more
 - Memory : 64MB or more
 - Hard disc space : about 20MB or more
 - CD-Rom drive : Download software installation and audio CD data compression CD-Rom drive for (MP3,WMA)
 - Associated OS : Windows 98SE/ME/2000/XP
- **Macintosh**
 - Main : USB interface (Rev. 1.1) Standard equipped PowerMacG3, PowerMacG4, PowerMacG4 Cube, iMac, iBook, PowerBook, PowerBookG4
 - Memory : 64MB or more
 - Hard disc space : about 20 MB or more
 - CD-Rom drive : Download software installation and audio CD data compression CD-Rom drive.for (MP3,WMA)
 - Associated OS : In case of iTunes 2 - MacOS 9.0 ~ 9.2
In case of MPIO-Manager for Mac - MacOS 8.6~9.2/X (operates in Classic mode only)



PC connection by USB hub and extension cord cannot be guaranteed.

2 Check point before Using

Construction of product



DMG Plus main body



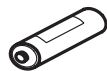
USB connection cable



Earphone
(Made in German by Sennheiser)



Install CD-Rom
(Hybrid)



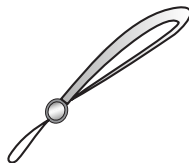
AA size Ni-MH
rechargeable battery



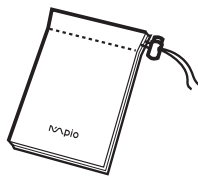
High speed
charger



User's Manual



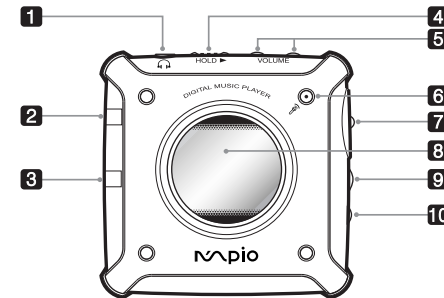
Hand Strap



Carrying case

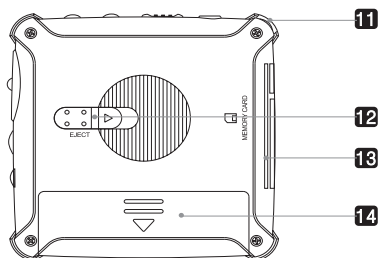
Names and function of each parts

Front



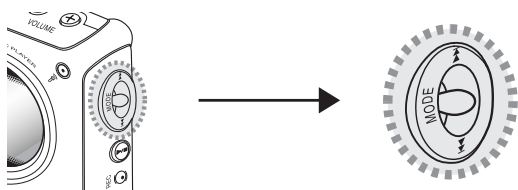
- 1. Earphone Slot**
Connect earphone. Stereo Mini jack specification.
- 2. Hold Slider**
Push and lock in the direction of arrow. For preventing misoperation in case of being portable.
- 3. Sound Tuning**
Sound can be tuned from 0 to 40 level.
- 4. Embedded Microphone**
In case of voice recording, this can be used. Be careful not to cover this part in case of recording.
- 5. Multi key**
In case of fast forward, rewind, music search, and other set-up, this can be used.
- 6. Replay/Stop button (Power Switch button)**
In case of Power on, Power off, Replay, this can be used.
- 7. Recording , Section Repetition button**
In case when button is pressed in stop position, voice recording is started. In case when button is pressed during replay. The starting point of phrase repetition is designated. Set up phrase repetition by pressing button again. The relevant part is repeated endlessly. In case of phrase repetition set-up, cancel it by pressing the key.
- 8. LCD**
Indicates the music name and the function, set-up of current player.
- 9. USB Connector**
Connect USB cable into PC.
- 10. Expansion Slot**
In case of connecting digital camera.

Rear



- 11. Handstrap Holder**
Connect handstrap.
- 12. SmartMedia Card Slot**
Insert SmartMedia Card.
- 13. Eject Slider**
Push in the direction of arrow and pull the SmartMedia Card.
- 14. Battery Cover**
Put AA size battery and cover it.

Use of Multi Key



	Push toward ◀◀	Press at right angles	Push toward ▶▶
Stop/Replay	Move into next file Long time pressing FF	Enter into Menu mode	Move into previous track
Menu mode	Move into cursor below	Enter into sub- category menu	Move into cursor above
Menu Set up	Move into cursor below	Selection confirmed	Move into cursor above

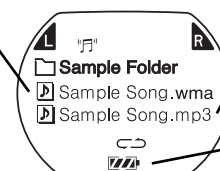
LCD

Type of LCD Indication

Screen selection of folder and file

Changing name of folder and file

In case of when replay button is pressed, folder will move inside, file is replayed.



Indication of folder and file name

Up and down scroll by using Multi key.

Indication of battery residual quantity

Replay Screen

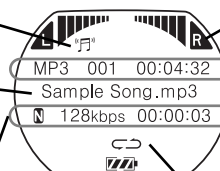
Indicates music replay mode.

File indication during replay

File name, ID3 tag information are indicated

Replay mode information (from left)

- Setting up EQ
- Sampling rate
- Replay process time



In case of replay, EQ band is increased or decreased.

File information during replay (from left)

- File format
- Track number
- Total time of music

Repeat Icon

Repeat mode is indicated

Indication of EQ icon

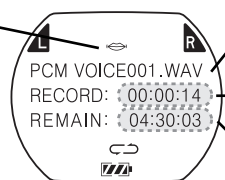
- N** : Normal
- P** : Pop
- R** : Rock
- C** : Classic
- U** : User
- 3** : 3D sound

Indication of Repeat icon

- Intro = Intro replay
- = Repeat one track
- = Repeat total track
- = 1 time repeat
- SHUF = Shuffle

Recording screen

Recording icon
Indicates recording mode.



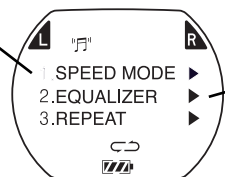
recording file name

recording time

recording possible time

Set-up Screen

Changing Menu name
You can move into sub-menu by pressing Multi key



Indication of Menu name
Up and down scroll by using Multi key.

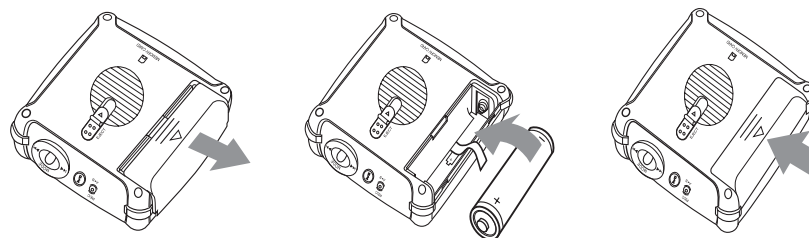
Modification of indicating language in Menu

Indicating language in menu can be translated into 7 various languages including Korean, English.

1. In case when power is on, enter into menu by pressing Multi Key.
2. Select 'Language' in Menu and enter into sub-menu.
3. Select the language you want.
4. Press "Return" and return to menu.

How to use battery

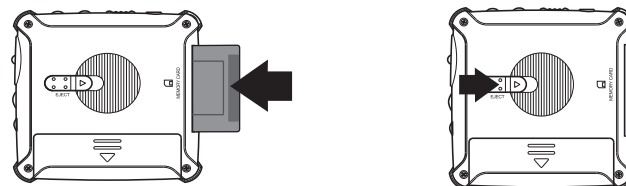
Like the figures below, First open the battery cover and put AA size Ni-MH rechargeable battery and hydrogen rechargeable battery or alkaline battery. Be careful not to change both polarity.



In case of using the rechargeable battery, System menu in the main --> "Rechargeable" should be selected in Battery mode. In case of alkaline battery, it should be changed into "Regular".

How to use SmartMedia Card

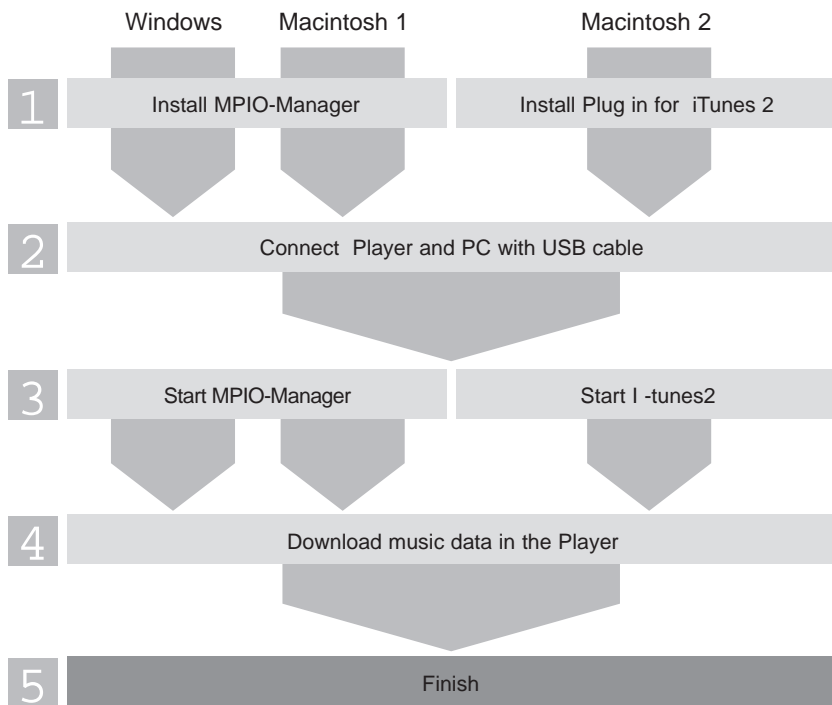
In case of using SmartMedia Card, insert it like the figures below and push completely. In case of ejection, push Eject slider into the direction like figures below.



- Be sure to turn the main power off before inserting and pulling SmartMedia Card.
- SmartMedia Card consists of 5V and 3.3V type. This product supports 3.3 V Card. Do not mistake.

3 Set up

Set up Order



Installation of Transmission Software

In case of Windows

● Driver

1. Turn the power of PC on and insert Install CD on CD-Rom Drive.
: Indicates install menu screen automatically.
2. Click 'MPIO-Manager' in install menu.
: MPIO-Manager setup is started.
3. If the screen below appears, click 'Next'.
4. Designate folder to be installed.
: In case when designated folder is not needed, click 'Next'.
5. Start --> Set up the indication in program menu.
: Particular designation is not needed, click 'Next'.



Automatically installed and completed. You can see MPIO-Manager icon created in background screen.

In case of Macintosh 1

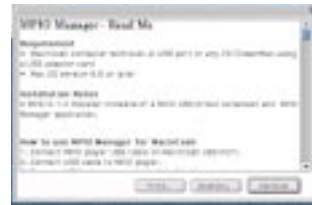
● Installation of Driver

Install 'MPIO-Manager' in the following order.

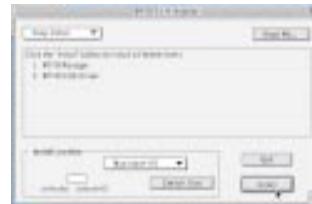
1. Turn the power of Macintosh PC on , and insert install CD on CD-Rom dirve.
2. Click CD-Rom icon, and double-click MPIO installer in the folder.
3. If the screen below appears, click 'Continue'.



4. First, read the contents of usage contract. And if you agree on this, click 'Continue'.



5. Click 'install' in the screen below.



6. Finish Installation.

If the screen below appears, click 'Quit'. MPIO-Manager icon is created.



Installation of MPIO-Manager is completed.

In case of Macintosh 2

● In case of Macintosh 2 : installation of plug-in for iTunes 2

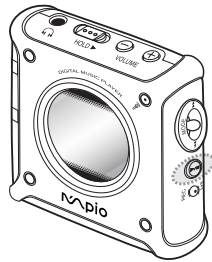
Plug-in for iTunes 2 is for MacOS 9 only. You cannot use it in MacOS 8.6 and MacOS X.

1. Turn the power of Macintosh PC on, and insert install CD on the CD-Rom drive.
2. Double-click CD-Rom icon and iTunes 2 MPIO plug-in installer icon in the folder.
3. Install in the screen direction.

Connect PC and Player

● Be sure to turn the power off before connecting into PC

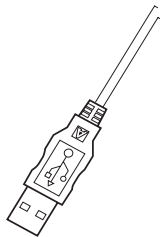
1. Turn the power of PC on and connect USB cable into USB cable port in PC.
2. Turn the power of Player on.



3. Connect other part of USB cable connected into PC to USB port.

In case of the first connection, the certification of drive installed before is automatically executed. After the certification of drive 'USB connected' appears in LCD.

Form of USB cable connector



Series A
Connected to PC

Attention !

In case of Windows XP, during the initial connection, the following screen will appear.

1. Select ' Install software automatically' and click ' Next'.



2. If the screen below appears, Click 'Installation continues'.



3. If the screen below appears, click "complete"



The connection between PC and Player is completed.

Downloading music file from PC

Embedded, Exterior Memory Format

If you want to erase the total contents of embedded memory or to use SmartMedia Card, Memory can be formatted.

1. Double-click MPIO-Manager icon in the background screen.

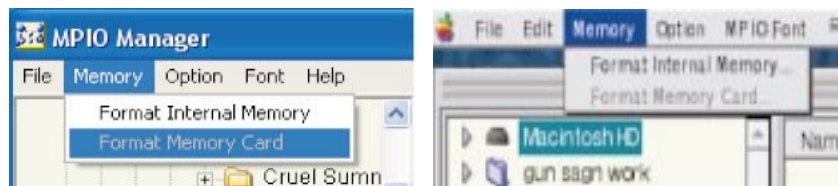
- In case when Player and PC are connected, if MPIO-Manager is executed, it is detected automatically.

2. Select memory to be initialized in the 'memory' menu of full down menu.

- In case of embedded memory, select 'format internal memory'.
- In case of SmartMedia Card, select Format Memory Card'.

If it is selected, format will be started automatically.

After completing Format, Be sure to reconnect to main body.



In case of Windows

In case of Macintosh



If embedded memory is formatted, the font is also removed. Therefore, after formatting it, be sure to re-download the font. Click "font" in the pull down menu of MPIO-Manager and select language and download it. Its capacity is about 2MB. But English can be indicated regardless of font.

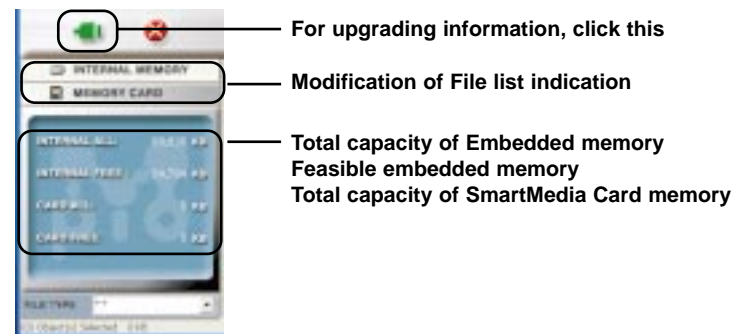


- In case of using SmartMedia Card, Be sure to execute the format in MPIO-Manager.
- SmartMedia Card used at other company's product should be used after formatting it. And If you want to use it at other product, additional format is needed.

Music File Download

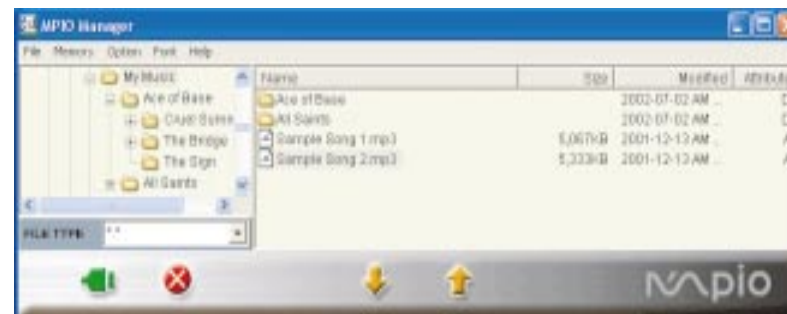
1. Checking memory capacity.

Each capacity of embedded memory and SmartMedia Card can be indicated. Click 'Internal memory' button and 'memory card' button, and file list stored in each memory can be indicated.



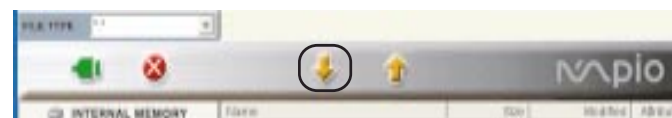
2. Select downloading music data in the file list screen.

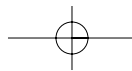
It is the same method of selecting file in Windows.



3. Click download button.

For checking, the question screen 'Are you sure' appears. If you click 'OK', download is started.





4. You can see downloaded files in Player information screen.



- One depth folder can be supported only.
- Folder can be stored in embedded memory of product. (cannot be stored in SmartMedia Card)
- In case when folder to be downloaded is more than 2 depth, the data less than 2depth can not be downloaded.

Upload data recorded in Player

You can upload WAV file recorded in Player and store it in PC by using MPIO-Manager.

1. Select folder that voice file is stored in Manager search.
2. Select voice file to be uploaded (VOICE001.WAV) on product information screen.
3. Click Upload button.



4. Check Uploaded File.



MP3, WMA file can not be uploaded. Uploading those files infringes copyrights law.

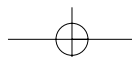
File Remove

1. Select the file to be removed in list screen.
2. File of Pull down menu --> Select Erase file in MPIO. Or after selecting file, click right mouse button and select Erase in Pop up menu. The dialogue screen to check the remove appears.
3. Select 'OK'.
The selected file is removed.

Replay Order Modification of music file

Replay order of music file in the Player is the same as the file list indicated in player list screen of MPIO-Manager.

1. 'File' of full down menu --> Select ' Change file order in MPIO'.
Modification screen of Track order appears.
2. Drag file name on screen and put it the position you want.
3. Click 'OK'.
 - Order modification screen of track is closed.
 - You can see that the order was changed in Player file list screen of MPIO-Manager.



Use iTunes 2

In case of installing plug-in for iTunes 2, you can see MPIO on the iTunes 2. For basic usage, refer to help menu of iTunes 2. Also in case of using iTunes 2, after connecting mpio, turn the power on and operate iTunes 2 program.



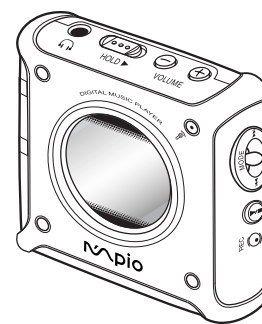
Embedded memory / SmartMedia Card(is indicated during the use) / Use of Font download, memo pad/ Memory initialized/Indication of file list



- Folder function can not be used in iTunes 2.
- If embedded memory is formatted, font will disappear. Re-download the font by using Font download menu. (Capacity of Font is about 2MB, it covers the area of embedded memory.)

4 Basic Method of Using Player

Music file Replay



Search track/ FF/ Rew / Next track

Power on/ Play / Pause

Phrase repetition start / Cancel

1. Press Play/Pause button.
2. Move Multi key up and down, and select the track to hear.
3. Press Play/Pause button and start 'replay'.
- LCD indicator screen changes into replay screen.
4. If Multi key is pressed up and down for a long time during replay, Rew/FF is started.
5. If Multi key is pressed up and down one time during replay, menu is moved into Previous track/ Next track.
6. If Play/Pause button is pressed one time during replay, it pauses. And if you press the button again, replay is started.
7. If you want to hear the part of one track repeatedly, press Rec button one time during replay.
The first part to be repeated is designated. Press it again and set-up the repetition part. In case of cancel the set-up, press record Button once again.
8. If you want to turn the power off, press Play/Pause button for a long time.

Voice Recording

The voice can be recorded by using embedded mike. (Wav file format)

1. In case of stand-by of music file replay, press 'Record' button.

- Record screen in LCD is indicated.



During replay, if you press record button 'phrase repetition' is started.

2. If you want to stop record, press 'Stop' button.

- LCD is changed into stop screen, and recored file name is indicated on LCD.

Setting up of various functions

You can set up the functions below by using Multi key.

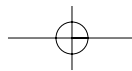
- EQ function
- Repeat mode set-up
- Memopad check
- Removing File
- Modification of Menu indication language
- Backlight timer, track information, scroll speed
- Auto power off, Sleep mode, Battery type set-up

Method of setting function

1. Press Multi key and enter into menu.
2. Select the menu to be set by moving Multi key up and down.
3. After selecting item, if you press Multi key, you can into sub-menu.
4. Select the desired set-up value by Multi key.

View of Function Menu

Menu item	Sub-menu 1	Sub-menu 2	Detailed set-up value	
1. Speed Mode			You can select replay speed among SLOW (50, 63, 75, 88%), Normal (100%), Fast (125, 150, 175, 200%). Attention! This can be applied to file below 22.05 of Sampling rate.	
2. Equalizer (EQ)	1. Normal		Normal mode	
	2. Pop		Pop Exclusive mode	
	3. Rock		Rock Exclusive mode	
	4. Classic		Classic Exclusive mode	
	5. User	Bass		Bass can be modulated from 1 to 10 level
		Treble		Treble can be modulated from 1 to 10 level
		Return		Move into former menu (return is the same)
6. 3D Sound		3D sound is provided		
7. Return		Return		
3. Repeat	1. Normal		Attention ! If folder mode is selected, Repeat mode is changed. Refer to separate table.	
	2. Repeat one			
	3. Repeat all			
	4. Shuffle			
	5. Intro			
	6. Return			
4. Folder mode	1. Enable		Use folder mode.	
	2. Disable		Do not use folder mode.	
	3. Return		Return	
5. Camera	1. VGA		For additional option, the use of camera can be set..	
	2. CIF			
	3. Return			
6. Memopad	1. (file name)		Indicates Memo.	
	2. Return		Return	
7. Remove	1. Remove all tracks		Remove total tracks are removed in an embedded memory.	
	2. Remove the designated track		Remove the designated track in an embedded memory.	
	3. Return		Return	
8. Language	1. English		Indicates menu in English	
	2. Korean		Indicates menu in Korean.	
	3. Japanese		Indicates menu in Japanese.	
	4. Chinese		Indicates menu in Chinese.	
	5. German		Indicates menu in German.	
	6. French		Indicates menu in French.	
	7. Return		Return	



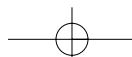
Menu Item	Sub-menu 1	Sub-menu 2	Detailed set-up value	
9. System Mode	1. Back light	1. Never	No light.	
		2. Default	After entering Key, light is put for 3 seconds.	
		3. User	Random set-up is possible from 3 ~ 30 seconds.	
		4. Return	Return	
	2. Auto play	1. Enable	When the power is turned on, replay is started automatically.	
		2. Disable	When the power is turned on, auto replay is not operated.	
		3. Return	Return	
	3. Play position	1. Initial	Replay the last replayed track.	
		2. Stopped	Replay is started from the stopped position of last replayed track.	
		3. Return	Return	
	4. Auto power	1. Default	If there is no operation, the power will be turned off after 3 minutes in order to prevent from consuming the power.	
		2. User	Auto power-off time can be set at random within 3 ~ 30 minutes.	
		3. Return	Return	
	5. Sleep	1. Off	Sleep -off function is not used.	
		2. On	Sleep-on can be set from 3 ~ 60 minutes. When the set-up time is over, the power will be turned off automatically.	
		3. Return	Return	
	6. Title info	1. File name	Scroll the file name during file replay.	
		2. Tag info	Scroll ID3 Tag information during file replay.	
		3. Return	Return	
	7. Scroll width	1. Default	16 pixel is scrolled per second.	
		2. User	Scroll speed can be set at random. 16/32/48/64/80/96/112/128 Pixel per second	
		3. Return	Return	
	8. Battery	1. Regular	In case of alkaline battery.	
		2. Rechargeable	In case of rechargeable battery.	
3. Return		Return		
10. Return		Return		

Folder mode set-up/In case of non-setup, the operation method of Play mode

Folder mode - Enable	3. Repeat	1. Normal	Plays all tracks in folder sequentially.
		2. Repeat one	Repeats only the currently selected track.
		3. Repeat all	Plays all stored tracks in folder continuously.
		4. Shuffle	Shuffle plays tracks in folder in a random order.
		5. Intro	Plays the first 10 seconds of each track in folder.
Folder mode - Disable	3. Repeat	1. Normal	Plays all tracks sequentially.
		2. Repeat one	Repeats only the currently selected track.
		3. Repeat all	Plays all stored tracks continuously.
		4. Shuffle	Shuffle plays tracks in a random order.
		5. Intro	Plays the first 10 seconds of each track.



If there is no key entering for 3 seconds in all menu set-up screen, It returns to replay screen and replay stand-by screen automatically.



How to Use Memopad

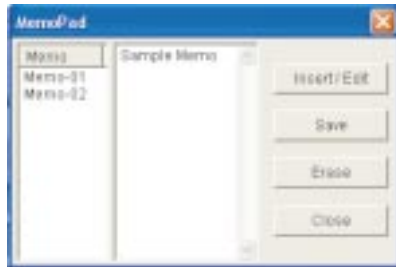
In case of MPIO-Manager

● Write Memo

Select 'Option' --> 'memopad' in full down menu.

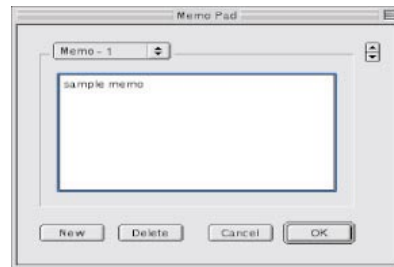
In case of Windows

Enter the sentence you want to store at right screen. If you click 'Insert/Edit' button, 'memo-01' is written. If you click 'Save' button, the contents of memo is stored as "memo.mem" in the proper directory.



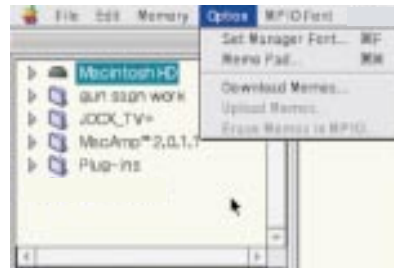
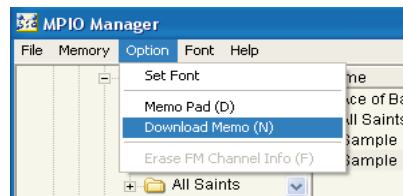
In case of Macintosh

Enter the sentence on the screen click 'New' button. And if you click 'OK', the contents of memo is stored as "memo.mem" in the proper directory.




● Transmit the contents of memo into Player

Select 'OPTION' --> 'Download memos' in the full down menu. Dialogue screen asking memo download appears, 'OK' is selected ' memo.mem file is downloaded into player.



In case of iTunes 2

● Write memo

If () is pressed, mpio setting screen appears. Click 'Edit Memo Pad' in the MPIO setting screen.



● Transmit memo into Player.

Click 'put' on the MPIO setting screen. Memo.mem file is transmitted into Player.



● View of Memo stored in Player

If you select 6. Memopad in the function set-up menu of Player, you can view the stored memo.

5 Others

How to use chargeable battery and alkaline battery

Characterics of MPIO charger

- High speed charging is possible for Ni-MH, Ni-CD exclusive.
- Current and voltage can be controlled by semiconductor controlled auto charger.
- When charging is started, LED lamp is lighted. When charging is completed, LED lamp is put out.
- Since this charger is designed for AA Size exclusive, the best charging condition can be detected and voltage can be maintained. (minute charging is possible)

Charging the Charger

- Insert rechargeable battery into the charger in the direction of negative pole.
- Plug the charger in wall outlet.
- During the charging time, LED lamp is lighted. And when charging is completed, lamp is put out.
- In case when charging is completed, pull the charger out from the wall outlet.
- During the charging, temperature of battery may be rised.

Cautions for using battery

- Be careful not to drop battery or shock it
- Do not keep it at high temperature or use it
- When the rechargeable battery is used in overheated condition, it may not be safe and efficient.
- When the battery is not used for a long time, discharge and keep it
- Do not use disjoint or rebuild the battery as you please
- During the storage, the rechargeable battery may be discharged. In case of re-use it, recharge the battery
- Ni-MH, Ni-CD rechargeable battery can be charged or discharged about 500 times.
- In case of Ni-CD rechargeable battery, be sure to purchase the fast charging type
- Newly purchased battery or unused battery may not be charged. This is because it is the magnetic memory chateristics, in this case, repeat the charging or discharging 2-3 times.

Caution for using charger

- This charger is designed for Ni-MH , Ni-CD rechargeable battery exclusively. Do not charge other rechargeable battery or alkaline battery
- Do not use this in a damp place
- In case of inserting rechargeable battery, do not change the polarity
- If there are some dusts on both polarities, efficiency of battery may be lowered. Regularly manage and always keep it clean
- Do not pull the battery during the charging
- In case when children use it, let them study the method in advance
- In case when battery is not used, plug the charger off from the wall outlet and store it
- Do not touch the plug with wet hands.

FAQ

Q1. In case when file (music, data) is downloaded from PC 'File Restriction number is over' message occurs and was not downloaded.

A1. 124 files can be stored in MPIO in maximum. And in SmartMedia Card, 126 file can be stored.
(But, If file name exceeds 8 bits, the number of downloadable file may be decreased)

Q2. Can the SmartMedia Card used at other product in MPIO?

A2. Basically, this cannot be compatible with other product. Therefore, reformat it in MPIO before using. If you use Card used in this MPIO at other product, be sure to reformat in that product.

Q3. I can't see part or total files PC information screen of MPIO Manager.

A3. Modify 'file type' to be indicated in MPIO-Manager.

Q4. I can't upload file in the MPIO.

A4. Uploading MP3, wMA file infringes the copyrights law. But, normal data file can be uploaded.

Q5. After formatting embedded memory, other languages except English is not indicated.

A5. If embedded memory is formatted, Font is also removed. Please re-download the Font in MPIO-Manager.

Q6. Voice cannot be recorded for below 5 seconds. Is it wrong?

A6. It is not out of order. MPIO cannot record the time below 5 seconds.

Q7. Where do firmware version and software version check?

A7. After Connecting MPIO into PC, operate MPIO-Manager. You can check software version and firmware version in 'Help' menu of MPIO-Manager.

Q8. SmartMedia Card is not detected.

A8. Format SmartMedia Card in MPIO-Manager
 1. Insert SmartMedia Card into MPIO.
 2. Turn the power of MPIO on and connect it into PC.
 3. Execute MPIO-Manager.
 4. Select 'memory'--> 'Format memory card' in menu bar.

Q9. When MPIO power is off and turn it on again, set value is not stored and changed into default value.

A9. Please initialize embedded memory.

Q10. When MPIO is connected with PC. But 'USB connected' phrase does not occur in LCD screen of MPIO.

A10. Before connecting MPIO into PC, turn the power of player on first. When the power is not turned on and connected with PC, 'USB connected' does not occur. Although you connected in right order, but if 'USB connected' does not occur, Be sure to check USB item in equipment manager item in the 'control panel' --> system of PC. Host controller name of USB controller item is VIA, please download VIA patch file from 'freeware in our URL and install the file and reconnect it into PC.

Q11. WMA file is downloaded into MPIO, but the file does not occur LCD of MPIO and not replay it.

A11. WMA file with security function can not be replayed in MPIO.

Cautions for using MPIO

If you care for the following matters in case of using MPIO, you can use this for a long time.

- Do not shock and tremble it. Keep it in a safe place
- Be careful not to permeate water into MPIO
- Do not use and place MPIO in hot and humid area or near magnetic, heat
- In case when MPIO is not used for a long time, Be sure to store it after plugging off. If Battery has a leak, it may be fatal damage to product..
- Do not disjoint or rebuild or reconstruct MPIO as you please. The product suspicious to be disjointed can not be able to take a service
- In case when there is some dust on product, wipe out it with soft cloth. Do not use chemicals.
- In case of connecting, do not shock or twist the connected part of USB cable. And also do not left it to connect into USB cable
- Keep USB connection slot of MPIO clean.