

Chapter 5

Synchronization

5.1 About synchronization

You can synchronize information between your PC or Microsoft® Exchange Server and your MWg Zinc II with ActiveSync on both your MWg Zinc II and PC. Before synchronizing information, please install ActiveSync 4.5 on the PC. Then you can:

- Synchronize information to get the latest information in all locations.
- Add or remove programs on your device.
- Transfer files between your device and a PC.
- Change synchronization settings and the synchronization schedule.

Once you install ActiveSync on your PC, you will be prompted to connect your device and create a synchronization relationship with the device by using a USB cable or Bluetooth connection. While you are setting up this relationship you can choose the information you want to synchronize with either your PC or with Microsoft® Exchange Server.

Note: If your PC is using Windows Vista then you will not need to install ActiveSync. Vista already has Windows Mobile Device Centre installed which is used for synchronising your device and PC.

5.2 Installing ActiveSync

Please do not connect your device to the PC before installing **ActiveSync 4.5** on the PC from the **Getting Started Disc** included in your package. You may only connect the device to the PC by USB cable or Bluetooth after ActiveSync is installed.

Please note: Your MWg Zinc II has built-in **ActiveSync** already. To install **ActiveSync 4.5** in your PC, please follow the instructions given when you run the Getting Started Disc. After finish installing **ActiveSync** in your PC, you will be asked to build a partnership with your device using one of the following connection methods:

- USB cable
- Bluetooth

5.3 Choosing your synchronization type

Bluetooth connection

You can also synchronize your information by using Bluetooth wireless connectivity technology, which allows your device to connect to a Bluetooth-compatible device within 10 meters. For best connection results, it is recommended that you connect the device to the PC using USB to establish a synchronization relationship before connecting via Bluetooth.

To synchronize via Bluetooth connection:

1. Execute **ActiveSync Help** on the PC and follow the instructions for configuring Bluetooth on your PC to support **ActiveSync**.
2. Tap **Start > Programs > ActiveSync**.
3. Tap **Menu > Connect via Bluetooth**. Make sure that the device and the PC are within 10 meters or shorter.
4. Tap **Sync**.
5. After finishing the synchronization, tap **Menu > Disconnect Bluetooth**.
6. Turn off Bluetooth to preserve battery power if not used.

For more details, please refer to **Chapter 6.3 Bluetooth**

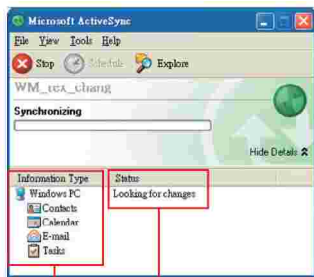
Please note: Before you connect to this PC via Bluetooth, please make sure that you have set up a Bluetooth partnership with the PC: Tap **Start > Settings > Connections > Bluetooth**.

5.4 Using ActiveSync tools

Once you've established the connection partnership between your device and pc, you can start synchronization. The information you can synchronize includes Contacts, Calendar, Outlook E-mail, Tasks, and Notes.

To select a specific data source:

1. Tap **Start > Programs > ActiveSync**.
2. Tap **Menu > Options**.
3. Launch **ActiveSync** on your PC, and turn the synchronization for specific information types on or off as necessary.



Information for
synchronization

Status of
synchronization

Outlook E-mail

After you have selected Inbox for synchronization in **ActiveSync**, Microsoft® Outlook E-mail messages are synchronized as part of the general synchronization process. During synchronization:

- Messages are updated from the **Inbox** folder on your PC or the Microsoft® Exchange server to the Inbox folder of the Outlook E-mail account on your device. You can only synchronize information directly with an Microsoft® Exchange Server if you are running Microsoft® Outlook® 2003 or later. By default, you'll receive messages from the last three days only, the first 100 lines of each new message, and file attachments of less than 100KB in size.
- Messages in the **Outbox** folder on your device are transferred to Exchange or **Outlook** and then sent from those programs.
- Messages on the two computers are linked. When you delete a message on your device, the message will also be deleted from your PC the next time you synchronize.
- Messages in subfolders in other E-mail folders in **Outlook** are synchronized only if they have been selected for synchronization in **ActiveSync**. For information on initiating **Outlook** E-mail synchronization or changing synchronization settings, see **ActiveSync** Help on the PC or **Connections Help**.

Please note: Text messages (SMS) and Multimedia messages (MMS) are not received through synchronization. Instead, they are sent to your device via your network service provider.

Please note: When you delete or change an item on either your PC or device, the item is changed or deleted in the other location the next time you synchronize. If you synchronize your notes using file synchronization and then later decide to use notes synchronization, all of your notes will be synchronized with **Outlook** on your PC and will no longer be stored in **My Documents** folder.

5.5 ActiveSync errors

Whenever **ActiveSync** cannot successfully synchronize your information, it displays an error on your device and your PC.

Viewing error information

Press Action button when the error text is displayed. **ActiveSync** will then display more information about the error that has occurred. Some types of errors can interfere with automatic synchronization. If you suspect that a scheduled automatic synchronization has not occurred, you should attempt to manually synchronize your information. Successfully completing manual synchronization will reset automatic synchronization. For more information, see **Synchronizing Information** section of **ActiveSync Help** on your PC.

Please note: Most firewall applications are intended to block network traffic and secure the PC from incoming network connections. Since **ActiveSync** uses TCP ports for data transfer with devices, to avoid this potential experience, you will need to manually allow this traffic to be un-blocked by Firewall applications for the Device using **ActiveSync**. You will need to add ActiveSync application processes into **Firewall Programs Exception List**.

Chapter 6

Getting Connected

Your MWg Zinc II has powerful networking functions that enable you to connect to the Internet or to other devices. You may use a number of different methods, for example, 3G, GPRS network or Wi-Fi to connect to the Internet. You can set up connections to the Internet and to a corporate network at work to browse the Internet, send and receive E-mail, use instant messages, and synchronize with **ActiveSync**. Via Bluetooth or USB functionalities, you can also transfer files between your Zinc II and other devices. There are two types of connection settings: **My ISP** and **My Work Network**. **My ISP** settings are used to connect to the Internet, and **My Work Network** settings can be used to connect to any private network, such as a corporate network. Fill in the settings and you are ready to connect to the Internet.

6.1 Wireless manager

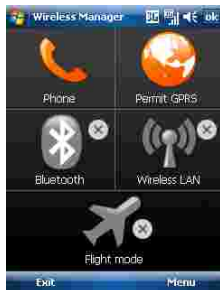
Wireless Manager is an integrated interface that combines **GPRS**, **Bluetooth**, **Wireless LAN**, and **Phone** in one function page. To manage these wireless connections, tap **Start > Settings > Connections** tab > **Wireless Manager**. You may also access **Wireless Manager** from **Today** screen.

Tap **All** to turn on/off all wireless connections. If you only want to turn off Bluetooth, for example, tap Bluetooth and the button will become colorless. Tap Menu to set up these wireless connections.

Flight Mode

While flying, you can turn off the wireless connections while still using the MWg Zinc II for other purposes.

1. Tap **Start > Settings**.
2. Tap the **Connections > Wireless Manager**.
3. Select Flight mode. This disables all wireless activity and is safe to use on an aircraft



6.2 GPRS

Before using GPRS to connect to the Internet, please contact your network operator to confirm that the service is enabled and supported on your SIM card. Using GPRS is convenient for you while traveling or working at home. You can use this device to browse web pages, read or send E-mail or MMS messages, and sign in Windows Live Messenger through wireless network.

GPRS connection settings

Your device comes installed with a configuration wizard to install the operator/ carrier settings relevant to your SIM card.

This application should start and attempt to configure the device when you first turn it on. If your device needs to have the application run manually please follow the process below:

1. Tap > **Start** > **Programs** > **Auto Config**
2. Select your Country and Operator and select OK If your Operator is not listed you will need to contact them directly with the number on your bill to help acquire and insert the relevant setting.

If your operator is not present in the drop down menu for your respective country, then the settings will need to be added manually. In this instance please obtain the relevant settings from your operator.

6.3 Bluetooth

Bluetooth is a short-range wireless communications technology. With Bluetooth, you don't need to line up the devices to beam information. The two devices only need to be within a range of about 10 meters. You may use Bluetooth in the following ways:

1. Exchange information, such as files, appointments, tasks, and contact cards, between devices that have Bluetooth capabilities. For example, if you and a co-worker each have a device with Bluetooth, you can beam items between your devices; these items could include files, contact cards, appointments, tasks, etc.
2. Create a dial-up modem connection between your device and a Bluetooth phone. You can then use the Bluetooth phone as a modem.

Bluetooth settings

To access the Bluetooth settings screen, tap **Start** > **Settings** > **Connections** tab > **Bluetooth**. To turn on Bluetooth, check **Turn on Bluetooth** option; uncheck the option to turn off. If Bluetooth is turned off, you cannot use Bluetooth to either send or receive information. In order to conserve the battery power or where radio use is prohibited, you might want to turn Bluetooth off.

By default, Bluetooth is turned off. If you turn it on, and then turn off your device, the Bluetooth radio also turns off. When you turn on your device again, the Bluetooth radio automatically turns on the radio. If you wish to turn on the radio, turn off Bluetooth first, and then turn on the radio. To make your device visible to other Bluetooth devices, check **Make this device visible to other devices** option.

If Bluetooth radio is turned on, then all of the other Bluetooth devices within range (about 10 meters) can detect your device and attempt to beam information to it, establish a bond, or use a Bluetooth service. In this mode, other devices can detect your device whether or not a bond has been created; however, in order to receive a beam from another device, you must accept it on your device. Other Bluetooth devices can now detect your device and attempt to beam information to it, establish a bond, or use a Bluetooth service. Note that, to receive beamed information, you must accept it on your device by selecting **Make this device visible to other devices**; this also turns on your Bluetooth radio. If you no longer want your device to be visible, uncheck **Turn on Bluetooth** option or uncheck **Make this device visible to other devices** option to leave the radio on, but not allow detection by other devices.

Bonds

To exchange information in a secure manner, you may use a bond to create a relationship between your MWg Zinc II and another Bluetooth device. To create a bond, you need to enter the same pass code on the two devices that you want to bond. You need only create a bond once between two devices. Once a bond is created, the devices recognize the bond and are able to exchange information without your needing to enter PIN again.

To create a bond:

You can create a bond between your device and another device that has Bluetooth. Once you do this, Bluetooth doesn't need to be in visible mode in order for you to beam information between the two devices; you only need to have the Bluetooth radio turned on.

1. Tap **Start > Settings > Connections** tab
2. Tap **Bluetooth > Devices** tab > **New Partnership**. Your device searches for other Bluetooth devices and displays them in the list.
3. Tap the name of the other device in the list, and then **Next**.
4. Enter a pass code of between and characters and tap **Next**.

5. Enter the same pass code on the other device.
6. In **Display Name**, edit the name of the other device if you want.
7. Tap **Finish**.

Please note: Make sure that the two devices are within 10 meters of one another and that Bluetooth is in visible mode on both devices.

To accept a bond:

1. Please make sure that Bluetooth is activated and visible to other devices.
2. When prompted to bond with the other device, tap **Yes**.
3. Enter a pass code of between and characters , and tap **Next**. You must enter the same pass code that was entered on the device requesting the bond.
4. In **Display Name**, edit the name of the device requesting the bond if you want.
5. Tap **Finish**.

The bond is created. You can now exchange information with the other device.

To rename a bond:

1. Tap **Start > Settings > Connections** tab.
2. Tap **Bluetooth > Devices** tab.
3. Tap the bond to rename.
4. In **Display Name**, enter a new name for the bond and then tap **Save**.

To delete a bond:

5. Tap **Start > Settings > Connections** tab.
6. Tap **Bluetooth > Devices** tab.
7. Tap and hold the bond and then tap **Delete**.

Beaming information with Bluetooth

1. Tap and hold an item to beam, such as an appointment in **Calendar**, a task in **Tasks**, a contact card in **Contacts**, or a file in **File Explorer**.
2. Tap Beam type of item.

3. Tap the device to which you want to send the beam. The item is beamed to the device you selected. If the device that you want to beam does not appear in the list, make sure that it is turned on, in visible mode, and within 10 meters of your device. Also, make sure that your Bluetooth is turned on.

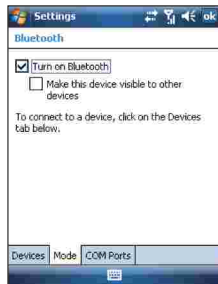
Receiving a Bluetooth beam:

1. Make sure that your device is configured to receive incoming beams and that Bluetooth is in visible mode.
2. Make sure that your device is within 10 meters of the device beaming the information.
3. When prompted to receive an incoming beam, tap **Yes**. The information is now stored on your device.

Bluetooth headset

To set up your device with a Bluetooth headset, you may refer to the user guide that comes with your Bluetooth headset and the following instructions:

1. Tap **Start > Settings > Connections** tab > **Bluetooth > Mode** tab and check **Turn on Bluetooth** and **Make this device visible to other devices**.



2. Tap **Start > Settings > Connections** tab > **Bluetooth > Devices** tab and tap **Add new device** to scan for other Bluetooth devices.



3. Your device starts scanning for Bluetooth devices.



4. Enter the pass code for the located Bluetooth device.

For information, please refer to documents that come with your Bluetooth headset. This code is usually "0000".



6. When you finish setup, you will see the Bluetooth device displayed in the menu.

7. Also, there will be a Bluetooth headset icon indicating the active connection status.



5. Define the display name and the type of service your Bluetooth device offers.



COM ports

For example, when you purchase a Bluetooth GPS-supported navigation software; you can register this device as an effective serial port by following the instructions on the manual of that product and the steps below:

Tap **Start** > **Settings** > **Connections** tab > **Bluetooth** > **COM Ports** tab. To register a new serial port:

- Tap **New Incoming Port** to enter setup screen.
- Select a port to be set.
- Select **Finish**.

6.4 Wi-Fi

Wi-Fi is a type of wireless local area network that communicates between two devices by high frequency radio waves. Your MWg Zinc II supports Wireless LAN, which is IEEE 80 2.11. b/g compliant. It allows your device to connect to the Internet with detected wireless network.

To activate Wi-Fi and connect to a local network

1. Tap **Start > Settings > Connections** tab > **Wireless Manager**.
2. Tap **Wi-Fi** to activate wireless network.
3. Once activated the device will immediately look for a local Wi-Fi network, and list those available.
4. Select the appropriate network and you will be prompted for a work or internet connection. Usually connect for The Internet.
5. You will then be prompted to enter the network key which is unique for each Wi-Fi network. Enter this code, follow the prompts and the device will connect to the Wi-Fi network.

To check your Wi-Fi status

Tap **Start > Settings > Connections** tab > **Wi-Fi Utility > Wi-Fi Status** tab and you may see the details of your phone's wireless LAN connection, including Status, ESSID, BSSID, BSS Mode, Channel, Data Rate, IP Address, and Signal Strength.

To configure Wi-Fi settings

Tap **Start > Settings > Connections** tab > **Wi-Fi Utility > Setting** tab and scroll to set the desired value /mode for the following setting items: Adhoc Channel, Preamble, Data Rate, Power Save, Power strength, and Auto Power off. Tap **Set** button to confirm your setting.

To update IP info

Tap **Start > Settings > Connections** tab > **Wi-Fi Utility > IP Info** tab > **Renew** or **Ping** button to update IP information or locate the IP address of the other device.

To search IP address

Tap **Start > Settings > Connections** tab > **Wi-Fi Utility > Site Survey** tab > **Re-scan** button to search the ESSID, Channel, RSSI, and BSSID of the Wireless LAN.

To change IP address

1. Tap **Start > Settings > Connections** tab > **Wi-Fi > Network Adapters** tab.
2. In **My network card connects to** drop-down list, tap either **The Internet** or **Work**. If you are connecting to your ISP at home, tap **The Internet**. If you are connecting to a private network such as a corporate network at work, tap **Work**.
3. Tap the appropriate adapter in **Tap an adapter to modify settings** box. The IP address will now appear in **IP Address** box on **IP Address** tab.
4. To change TCP/IP settings if your ISP or private network does not use dynamically assigned IP addresses, tap **Use specific IP address** and enter the requested information. Contact your ISP or network administrator to get the **IP address**, **Subnet mask**, and/or **Default gateway** (if needed).
5. To change DNS and WINS settings if your ISP or private network does not use dynamically assigned IP addresses, tap **Name Servers** tab and enter the requested information. Servers that require an assigned IP address may also require a way to map computer names to IP address. DNS and WINS are the resolution options supported on your MWg Zinc II.

Please note: After activating Wi-Fi, a new window, New Network Detected, will appear if any is detected. Select **Connect** and enter your password to the local network. Tap **Connect** to connect this device with local network.

6.5 USB card reader

You may use the device as a mass storage device or a micro SD card reader.

1. Tap **Start > Settings > Connections** tab > **USB**.
2. On **USB Connection Mode** screen, tap **SD-Card Reader**, and then tap **Change**.
3. Connect the phone to the computer with USB cable.
4. Your PC will automatically detect the new hardware. Now you can view or transfer files to and from your micro SD card.

6.6 Internet sharing

By using utility, you can set your MWg Zinc II as a wireless modem. **Internet Sharing** allows your PC/Notebook be connected to a wireless network.

1. Tap **Start > Programs > Internet Sharing**.
2. Select a **USB** or **Bluetooth PAN** as **PC Connection** type.
3. Connect your device via USB cable or Bluetooth to a PC/Notebook, and then tap **Connect**.

Please note: Before you tap **Connect**, please make sure that you have installed a GPRS SIM card, and that you have connected this phone to your PC/Notebook by USB cable or Bluetooth and disabled **ActiveSync**.

6.7 Cell broadcast setting

You can receive broadcast channel information and news from your service provider (please check you're your service provider for this service). Tap **Start > Settings > Connections** tab > **Cell Broadcast Setting**.

Chapter 7

Microsoft Email

7.1 E-mail

Synchronously processing E-mail

With synchronization, messages are synchronized between your MWg Zinc II and the PC by using ActiveSync and Microsoft Exchange or Outlook. If you want to synchronously process E-mail, you must activate the **Inbox synchronization** function in ActiveSync beforehand. For more information on **Inbox synchronization**, please refer to Chapter 5 Synchronization.

Please be aware of the following Inbox Synchronization process rules:

- Please select a desired cooperation relationship on New Cooperation Relationship screen in computer to synchronously transmit information. If you select not to perform synchronization, you may manually copy or move E-mail messages between your MWg Zinc II and the computer.
- Only the mails in Inbox of your computer will be synchronized.
- Only the mails in **Exchange** or **Outlook** can be synchronized.
- The mail from Outbox folder in your MWg Zinc II will be sent to your computer first, and then it will be delivered through Microsoft Exchange Server or Microsoft Outlook.
- If a specific letter is deleted in your MWg Zinc II, then it will also be deleted in your computer when you reconnect your device with computer.
- SMS in your device will not be synchronized.

Establishing E-mail services

If you have E-mail accounts from ISP or company network, you may use **Messaging** to receive or send e-mails. Please refer to the following instructions to set up a new Email account in **Messaging**.

1. Please acquire the following information from ISP or company network administrator:
 - E-mail address, user name and password.
 - POP or IMAP server name of Intranet E-mail.
 - SMTP server name for outgoing E-mail.
2. Establish E-mail services:
 - Tap **Start > Messaging > Menu > Tools > New Account**, and then follow the instructions on the screen to set up a new E-mail account.
3. See **Section 6.1 Wireless Manager** to connect your MWg Zinc II to a network and start receiving and sending e-mails and messages.
4. Connect with E-mail Server:
 - Tap **Messaging > Menu > Send and Receive**.
 - Tap **Messaging > Menu > Tools > Options > Accounts** tab to change E-mail account settings. When you finish, your new E-mail account will be displayed under this menu. You can start connecting to your E-mail server at this point. You can set up several E-mail accounts, including your Outlook E-mail account.

Connecting to the server

You may directly receive new e-mails from E-mail server without connecting to a computer. You may select to use it online or offline; if it is online, you may directly read and reply mail when your MWg Zinc II is connected to E-mail server. You can reply a mail directly by simply tapping **Send**.

You may select to disconnect to the internet after downloading only the subjects of new messages or partial messages and decide whether to download the full message later. When you reconnect next time, Inbox will download in accordance to appointed methods, and send out unsent e-mails in **Outbox**.

You may choose to read just the e-mails within the last few days, mail subjects only, or complete mail. You can also choose to receive only the attachments less than specific file size. To make these settings, tap **Start > Messaging > Menu > Tools > Options**, and change E-mail account setup by requirement.

7.2 Push e-mail

With Push E-mail, you can access e-mails in real time. This Direct Push Technology can be enabled by the Exchange Server 2003 administrator, bringing the latest information to you. To use Push E-mail, please turn on Wi-Fi or GPRS to connect to the Exchange Server.

Enabling Direct Push on your MWg Zinc II

1. On your MWg Zinc II, tap **Start > Programs > ActiveSync > Menu > Add Server Source**.
2. Input the address of your server in **Server Address**.
3. Input your network **User name**, **Password**, and **Domain**, and then tap **NEXT**.
4. In ActiveSync on your MWg Zinc II, tap **Menu > Schedule**.
5. Set Peak times to As items arrive and Off-peak times to As items arrive. Tap OK.

Now you have established a cooperative relationship for your MWg Zinc II and the Exchange Server. The next time when you tap **Start > Programs > ActiveSync > Sync**, you may synchronize with Exchange Server using Wi-Fi or GPRS.

Please note: To be able to use direct push, you need to have an exchange server. Microsoft Exchange Server 2003 also supports useful functions such as remote device wipe. To find out more on the benefit and usage of Microsoft Exchange server, please consult your company administrator or visit Microsoft's website: <http://www.microsoft.com>

Chapter 8 Multimedia

8.1 Camera



No	Icon	Function	Description
1		Display icon	Hides/ un-hides on screen icons
2		Settings	Opens settings for image capture
3		Gallery	Opens the image gallery
4		White balance	Adjusts the white balance on the image capture
5		Close	Shuts the camera application
6		Image resolution	Adjusts the quality of the image capture
7		Shoot mode	Adjust to normal or macro
8		Timer	Set the device to shoot after defined time delay
9		Camera mode & image number	Camera mode and the number of images possible to be captured with the image size and storage space
10		MMS video	Status of MMS video capture
11		Template image	Camera mode with template background and the number of images possible to be captured with the image size and storage space
12		MMS Image	Capture mode for MMS sending and the image capacity
13		Multiple image	Multiple image capture
14		Image numbers	Number of multiple images to be captured

Taking a photo

1. On Camera capture mode, focus on the object.
2. You can also tap on the icons on the top or open options menu to change camera settings.
3. Half way press Camera key to auto-focus, fully press Camera key to take photo.
4. After you take a photo, the image will be categorized in Pictures & Videos.

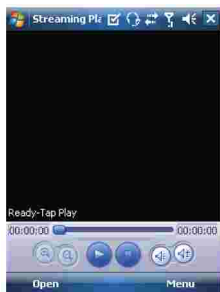
Please note: The default storage location is phone memory.

8.2 Streaming player

You can use this function to watch TV or listen to the streaming video on internet or operator WAP portal. This function supports all the streaming files. TV and radio content are provided by your operator, click any streaming link on Pocket Internet Explorer will launch this player.

Go to **streaming client**:

Today > Start > Streaming Player.



Chapter 9

Applications

9.1 File explorer

This feature allows you to view and manage all the files saved in your MWg Zinc II or theme memory card. To access File Explorer, tap **Start > Programs > File Explorer**. Select the source of where the files are saved.

To sort files by its types, tap Sort By and select a sorting method: **Name**, **Date**, Size, and **Type**. Tap **Up** to go up a level on the file hierarchy.

Excel Mobile workbooks are converted to **Excel** workbooks when they are synchronized or copied back to the PC. Tips:

When working with **Excel Mobile**, the following tips will help simplify your tasks:

1. Tap **View > Full Screen** to view in full screen. To exit full screen view, tap **View > Full Screen** to return to general view.
2. You can freeze panes: select a cell, then tap **View > Freeze Panes**. You may freeze the top and most left window cell on worksheet. Once you freeze the panes, you can see the frozen window cell no matter where the screen is scrolled.
3. You can split the worksheet to view different areas of this worksheet on the same screen. Tap **View > Split**, and then drag the split line to the desired location. To remove the split, select **View > Remove Split**.
4. Display or hide full horizontal and vertical lines. To hide a row or a column, select any cell on the row or column you wish to hide, then tap **Menu > Format > Row or Column > Hide**. To unhide a column or row, **Menu > Format > Row or Column >** and select **Unhide**.

Please note: When you are synchronizing or copying files from your MWg Zinc II to PC, Excel Mobile files will be

transformed into Excel files. While most of the settings will be kept during this transformation, some of the format and properties may be lost.

9.2 Word mobile

Please note: When you are synchronizing or copying files from your MWg Zinc II to PC, Word Mobile files will be transformed into Word files. While most of the text and paragraphing will be kept during this transformation, some of the format and properties may be lost.

9.3 GPS Viewer

Your device has a built in GPS receiver to pick track satellites and define your exact geographic location. The Zinc II has a GPS Viewer which allows you to view observe your current location, altitude and speed, and will show the number of satellites the Zinc II is tracking.

The first time you turn on the GPS software it may take several minutes to confirm your location as it needs to locate the available satellites and pin point where you are. This is called a cold start, but the next time the GPS software is activated,

the time taken to define the users location will be much faster as there will be a record of your last location.

If you decide to install additional mapping software to your device it will use this integrated receiver to pin point your location.



Chapter 10

Managing Your MWg Zinc II

10.1 Memory management

When the memory is insufficient, this device cannot automatically allocate memory, you may follow the steps below to free up more memory:

Moving some files to micro SD card

1. Tap **Start > Programs > File Explorer**.
2. Tap and hold selected items.
3. Tap Cut on the pop-up menu.
4. Switch to Storage Card category.
5. Tap and hold and then tap Paste.

Deleting the unwanted files

1. Tap **Start > Programs > File Explorer**.
2. Tap and hold selected items.
3. Select Delete.

Saving attachments to micro SD card

1. Tap **Start > Messaging > Menu > Tools > Options > Storage** tab.
2. If you have inserted a memory card, check Store attachments on storage card.
3. E-mail attachments will automatically be saved to memory card.

Clearing histories and deleting files from Internet Explorer

1. Tap **Start > Internet Explorer > Menu > Tools > Options > Memory** tab.
2. Tap Clear History and Delete Files to delete browsed web page related record.

10.2 Running programs management

1. Tap **Start > Settings > System** tab > **Memory > Main** tab:
Display current memory status of this device.
2. Tap **Start > Settings > System** tab > **Memory > Storage Card** tab:
Display the memory status of storage card in this device.
3. Tap **Start > Settings > System** tab > **Memory > Running Programs** tab: Display all current running programs in this device. Select any program from Running Programs List, you may select to Activate or Stop.

Activate: run the highlighted programs.

Stop: stop running highlighted programs.

Stop All: stop running all programs on Running Programs List.

10.3 Adding or removing programs

All programs pre-installed in the device will be saved in ROM (Read Only Memory) and are not removable. Data saved in ROM will not be lost by accident. All programs that you installed will be saved in RAM (Random Access Memory). As long as there is sufficient space in this device, you may install suitable programs by preference.

Adding programs through ActiveSync

1. Before installing the program, please make sure that your MWg Zinc II processor is suitable for the software. Tap **Start > Settings > System** tab > **About > Version** tab to check for information of this device.
2. Download the desired software to your computer (Please select software that is designed for Pocket PC and this device).

3. Read installation instructions, readme file, or accompanied programs provided to you.
4. Connect your computer with this device.
5. Install executive file to your computer.

If this file contains installation program, the installation wizard will automatically activate. Please follow the instructions on screen. Once the installation on your computer is completed, the program will automatically be installed to this device. If this file does not contain any installation program, an error message will show on the screen and tell you this program is invalid, which is not suitable for your computer. You must move this program to this device manually. If you cannot find any installation instructions for this program, please use "Browse" function of **ActiveSync** to copy program file to **Program Files** folder in this device. After completing installation, tap **Start > Programs**, and then select the program icon to launch that program.

Adding programs through Internet

You may download software suitable for this device from Internet.

1. Before installing the program, please make sure that your MWg Zinc II processor is suitable for the software. Tap **Start > Settings > System tab > About > Version** tab to check information in this device.
2. Directly download programs to this device by using **Internet Explorer** in this device. (Please select programs designed for Pocket PC and this device).
3. Read installation instructions, readme file, or accompanied programs provided to you.
4. Run installation executive file in your computer.

Adding programs to Start menu

Tap **Start > Settings > Personal tab > Menu**.

1. Check the programs to be displayed on **Start** menu.
2. Tap **OK** to save settings and return to Personal tab screen.

Removing programs

Tap **Start > Settings > System tab > Remove Programs**.

Select the programs you would like to delete from **Programs in storage memory** list, and then select **Remove** to delete highlighted programs. If the installed programs list does not contain the program you intend to remove, you may use **File Explorer** in this device to find the program and delete it by selecting and holding the program's name and then select **Delete** from the pop-up menu.

Chapter 11

Important Safety Information

11.1 Safety information

Read this information

Your MWg Zinc II Pocket PC Phone has been designed, manufactured and tested not to exceed the limits for exposure to electromagnetic fields recommended by the Council of the European Union. These limits are part of comprehensive guidelines developed by independent scientific organizations.

European standards provide for the amount of radio frequency electromagnetic energy absorbed by the body when using a phone to be measured by reference to the Specific Absorption Rate (SAR). The SAR limit for the general public is currently 2 watts per kilogram averaged over 10 grams of body tissue.

The maximum SAR values for MWg Zinc II are:

GSM 850 0.438/0.322 (FCC / CE)

GSM 900 0.85/0.618 (FCC / CE)

GSM 1800 0.287/0.158 (FCC / CE)

GSM 1900 0.457/0.246 (FCC / CE)

WCDMA 0.668/0.407 (FCC / CE)

11.2 Phone care

You should never attempt to open the phone casing. There are no user-serviceable parts inside and you might damage sensitive electronic circuits and components. Unauthorized disassembly will void the warranty.

You should never leave your phone in the window of your car or otherwise expose it to strong sunlight or excessive heat for a prolonged period. This may damage it.

You should never handle your phone with wet hands or expose it to moisture or liquids of any kind. Continuous changes from a cold a warm environment may lead to condensation inside the phone, resulting in corrosion and possible damage.

If you pack your phone in your suitcase during travel, beware damage. Cramming a suitcase may crack the LCD display. Remember to switch off your wireless connections during air travel.

As with all other radio devices, touching the built-in antenna area during telephone conversation may impair the quality and lead to shorter standby time due to increased power consumption.

The battery

Your phone is equipped with a high-performance Li-Ion battery. Optional battery types may be available; check with your local retailer. Observe the maintenance guidelines and your battery should give you a long service life.

1. At the beginning of the battery's life, fully charge and discharge (let it go flat) three times.
2. Do not overcharge the Li-Ion battery, as this can result in a reduction in battery performance and lifespan. The recommended maximum charge time is 4 hrs.
3. Avoid repeated short charging. It is preferable to let the battery go flat and then recharge it completely.
4. Avoid charging in strong heat or extreme cold. Ambient room temperature is preferable. The battery has its optimum performance in an ambient temperature of + 5 °C to + 50 °C.
5. Don't store a battery near a fire or heat source.
6. Use only the battery approved by the manufacturer.
7. Never replace the battery with a non-approved battery.
8. Never soak the battery in water or any other fluid.
9. Never try to open the battery as it contains substances that might be harmful if swallowed or allowed to come into contact with unprotected skin.
10. Never short-circuit the battery, as it may overheat and cause a fire. Keep it away from jewellery and other metal objects.
11. Never dispose of the battery in a fire. It could explode and release harmful substance into the environment.
12. Never dispose of the battery with your regular household waste. Take it to a hazardous material collection point.
13. Do not touch the battery terminals.

The charger

1. Use only the charger supplied with your phone.
2. Never pull the charger cord to release it from the mains- pull the charger itself.

Memory card

1. Do not remove or insert a memory card or turn off the handset while data on the card is being edited.
2. Do not touch the metal terminals with your hands or metal objects.
3. Do not bend the memory card or subject it to violent impacts. Keep it away from water and high temperatures.
4. Keep all memory cards out of the reach of small children.
5. Do not short circuit the contact points or expose it to liquids or moisture. When not in use, keep in the antistatic container it came in.
6. Do not use force when inserting or Handling the card, and do not expose it to excessive heat or strong magnetic fields.

Cleaning and storing

1. Your phone should always be handled with care and protected from dirt, dust and dampness. To avoid scratches, never place your phone face down.
2. If cleaning is necessary, switch the phone off and wipe carefully with a soft, slightly damp (not wet) cloth. Use a cotton swab to clean the camera lens. Allow the phone to dry completely before switching it on. Never use solvents for cleaning.
3. If you are not going to use your phone for some time, fully charge the battery and store the phone in a dry place away from direct sunlight. Your phone should be switched off during storage. Recharge every to months.
4. Never expose your phone to heat or strong sunlight.
5. Never expose your phone to moisture or liquids of any kind.
6. Do not paint your phone or otherwise block the keypad, microphone or earpiece function, i.e. with stickers.

11.3 Driving safety

Never use th handheld phones while driving. Ti's an offence while driving to hold a phone or cradle it in your neck, at any point during the setup, making or taking of a phone call, text message or any other data related mobile communication. Use of fully installed car kits are still permitted, as are the use of alternate handsfree accessories.

In the interest of safety, we would recommend use of a cradle while using any form of handsfree accessory.

While driving, we recommend that you use voicemail wherever possible, and that you listen to your messages when you are not in the car. If you must make a handsfree call when driving, keep it brief. An airbag inflates with great force. Do not place objects, including both installed or portable wireless equipment, in the area over the airbag or in the airbag deployment area. If in-vehicle wireless equipment is improperly installed and the air bag inflates, serious injury could result.

11.4 Electronic devices

Most modern electronic equipment is shielded from RF energy. However, certain electronic equipment may not be shielded against the RF signals from your Pocket PC phone.

Pacemakers

The Health Industry Manufacturers' Association recommends that a minimum separation of six inches be maintained between a phone and a pacemaker to avoid potential interference with the pacemaker. These recommendations are consistent with the independent research by and recommendations of Wireless Technology Research.

If you have a pacemaker:

1. Always keep your phone more than six inches from your pacemaker when turned on.
2. Do not carry your phone in a breast pocket.
3. Use the ear opposite the pacemaker to minimize the potential for interference.
4. If you have any reason to suspect that interference is taking place, turn your phone off immediately.

Hearing aids

Some digital phones may interfere with some hearing aids. In the event of such interference, call MWg Customer Service to discuss alternatives.

Other medical devices

If you use any other personal medical device, consult the manufacturer of your device to determine if it is adequately shielded from external RF energy. Turn your phone off in healthcare facilities when any regulations posted in these areas instruct you to do so. Hospitals or healthcare facilities may be using equipment that could be sensitive to external RF energy.

Vehicles

RF signals may affect improperly installed or inadequately shielded electronic systems in motor vehicles. Check with the manufacturer or its representative regarding your vehicle. You should also consult the manufacturer of any equipment added to your vehicle.

Posted facilities

Turn you phone off when posted notices so require.

Magnetic media

Magnetic fields generated by PC Phone phones may damage data on magnetic storage media, such as credit cards, computer discs or tapes. Do not place your phone next to such media.

11.5 Other safety guidelines

Aircraft

Regulations prohibit using your phone while in the air. Switch off your phone before boarding an aircraft or turn off the wireless connections.

Blasting areas

To avoid interfering with blasting operations, turn you phone off when in a blasting area or in areas posted: turn off twoway radio. Obey all sighs and instructions.

Potentially explosive environments

Turn you phone off when in any area with a potentially explosive environment and obey all signs and instructions Sparks in such areas could cause an explosion or fire resulting in bodily injury or even death. Areas with a potentially explosive environment are often, but not always, clearly marked. They include fuelling areas such as gas stations, below decks on boats, fuel or chemical transfer or storage facilities, vehicles using liquefied petroleum gas (such as propane or butane), area where the air contains chemicals or articles, such as grain, dust, or metal powders, and any other area where you would normally be advised to turn off you vehicle's engine.

Choking

Keep your phone away from children as the SIM card and other small parts present a choking hazard.

11.6 Cautions

Your Pocket PC Phone is a high quality piece of equipment. Before operation, read all instructions and cautionary markings on (1) AC Adaptor (2) Battery and (3) Product Using Battery.

1. Do not use this equipment in an extreme environment where high temperature or high humidity exists.
2. Do not abuse the equipment. Avoid striking, shaking or giving it a shock. When not using the unit, lay it down to avoid possible damage due to instability.
3. Do not expose this equipment to rain or spilled beverages.
4. Do not use unauthorized accessories.
5. Do not disassemble the phone or its accessories. If service or repair is required, return the unit to an authorized service center. If the unit is disassembled, a risk of electric shock or fire may result.
6. Do not short-circuit the batter terminals with metal items.

FCC Regulations:

- This device complies with part 15 of the FCC Rules. Operation is subject to the following two conditions: (1) This device may not cause harmful interference, and (2) this device must accept any interference received, including interference that may cause undesired operation.
- This device has been tested and found to comply with the limits for a Class B digital device, pursuant to Part 15 of the FCC Rules. These limits are designed to provide reasonable protection against harmful interference in a residential installation. This equipment generates, uses and can radiate radio frequency energy and, if not installed and used in accordance with the instructions, may cause harmful interference to radio communications. However, there is no guarantee that interference will not occur in a particular installation. If this equipment does cause harmful interference to radio or television reception, which can be determined by turning the equipment off and on, the user is encouraged to try to correct the interference by one or more of the following measures:
 - Reorient or relocate the receiving antenna.
 - Increase the separation between the equipment and receiver.
 - Connect the equipment into an outlet on a circuit different from that to which the receiver is connected.
 - Consult the dealer or an experienced radio/TV technician for help.

Changes or modifications not expressly approved by the party responsible for compliance could void the user's authority to operate the equipment.

RF Exposure Information (SAR)

This device meets the government's requirements for exposure to radio waves. This device is designed and manufactured not to exceed the emission limits for exposure to radio frequency (RF) energy set by the Federal Communications Commission of the U.S. Government.

The exposure standard for wireless devices employs a unit of measurement known as the Specific Absorption Rate, or SAR. The SAR limit set by the FCC is 1.6 W/kg. *Tests for SAR are conducted using standard operating positions accepted by the FCC with the device transmitting at its highest certified power level in all tested frequency bands. Although the SAR is determined at the highest certified power level, the actual SAR level of the device while operating can be well below the maximum value. This is because the device is designed to operate at multiple power levels so as to use only the power required to reach the network. In general, the closer you are to a wireless base station antenna, the lower the power output.

The highest SAR value for the device as reported to the FCC when tested for use at the ear is 0.422 W/kg for PCS Head SAR and 0.422 W/kg for WLAN Head SAR and when worn on the body, as described in this user guide, is 1.36 W/kg for PCS Body SAR and 1.36 W/kg for WLAN Body SAR. (Body-worn measurements differ among device models, depending upon available enhancements and FCC requirements.)

While there may be differences between the SAR levels of various devices and at various positions, they all meet the government requirement.

The FCC has granted an Equipment Authorization for this device with all reported SAR levels evaluated as in compliance with the FCC RF exposure guidelines. SAR information on this device is on file with the FCC and can be found under the Display Grant section of <http://www.fcc.gov/oet/fccid> after searching on FCC ID: UJU9QDENIM000.

For body worn operation, this device has been tested and meets the FCC RF exposure guidelines for use with an accessory that contains no metal and the positions the handset a minimum of 1.5 cm from the body. Use of other enhancements may not ensure compliance with FCC RF exposure guidelines. If you do not use a body-worn accessory and are not holding the device at the ear, position the handset a minimum of 1.5 cm from your body when the device is switched on.

European Union Notice

Products with CE marking comply with the R&TTE Directive (99/5/ EC), the EMC Directive (89/336/EEC), and the Low Voltage Directive (73/23/EEC) issued by the Commission of the European Community. Compliance with these directives implies conformity to the following European Norms (in parentheses are the equivalent international standards).

- o EN 600950-1 (IEC 600950-1)
- o Safety of Information Technology Equipment.
- o ETSI EN 301 511
- o Global system for mobile communications (GSM); Harmonized EN for mobile stations in the GSM 900 and GSM 1800 bands, covering essential requirements of article 3.2 of the R&TTE directive (1995/5/EC).
- o ETSI EN 301 489-1
- o Electromagnetic compatibility and Radio spectrum Matters (ERM); Electromagnetic Compatibility (EMC) standard for radio equipment and services; Part 1: Common technical requirements.
- o ETSI EN 301 489-7
- o Electromagnetic compatibility and Radio spectrum Matters (ERM); Electromagnetic Compatibility (EMC) standard for radio equipment and services; Part 7: Specific conditions for mobile and portable radio and ancillary equipment of digital cellular radio telecommunications systems (GSM and DCS).
- o ETSI EN 301 489-17
- o Electromagnetic compatibility and Radio spectrum Matters (ERM); Electromagnetic Compatibility (EMC) standard for radio equipment and services; Part 17: Specific conditions for 2.4 GHz wideband transmission systems and 5 GHz high performance RLAN equipment. Accessories Model NumberCradlePH15x.
- o ETSI EN 300 328
- o Electromagnetic compatibility and Radio spectrum Matters (ERM); Wideband Transmission systems; data transmission equipment operating in the 2.4 GHz ISM band and using spread spectrum modulation techniques.
- o EN 50360:2001
- o Product standard to demonstrate the compliance of mobile phones with the basic restrictions related to human exposure to electromagnetic fields (300 MHz - 3 GHz).
- o EN 50371:2002
- o Generic standard to demonstrate the compliance of low power electronic and electrical apparatus with the basic restrictions related to human exposure to electromagnetic fields (10 MHz -300 GHz) - General public.

Warning! DANGER OF EXPLOSION IF BATTERY IS INCORRECTLY REPLACED. TO REDUCE RISK OF FIRE OR BURNS, DO NOT DISASSEMBLE, CRUSH, PUNCTURE, SHORT EXTERNAL CONTACTS, EXPOSE TO TEMPERATURE ABOVE 60°C (140°F), OR DISPOSE OF IN FIRE OR WATER. REPLACE ONLY WITH SPECIFIED BATTERIES. RECYCLE OR DISPOSE OF USED BATTERIES ACCORDING TO THE LOCAL REGULATIONS OR REFERENCE GUIDE SUPPLIED WITH YOUR PRODUCT.

WEEE Notice

The Directive on Waste Electrical and Electronic Equipment (WEEE), which entered into force as European law on 13th February 2003, resulted in a major change in the treatment of electrical equipment at end-of-life.

The purpose of this Directive is, as a first priority, the prevention of WEEE, and in addition, to promote the reuse, recycling and other forms of recovery. The WEEE logo () on the product or on its box indicates that this product must not be disposed of or dumped with your other household waste. You are liable to dispose of all your electronic or electrical waste equipment by relocating over to the specified collection point for recycling of such hazardous waste. Isolated collection and proper recovery of your electronic and electrical waste equipment at the time of disposal will allow us to help conserving natural resources. Moreover, proper recycling of the electronic and electrical waste equipment will ensure safety of human health and environment. For more information about electronic and electrical waste equipment disposal, recovery, and collection points, please contact your local city centre, household waste disposal service, shop from where you purchased the equipment, or manufacturer of the equipment.

PC Requirement to Run ActiveSync4.5

To connect your device to the PC, you have to installed Microsoft® ActiveSync® program on your PC. ActiveSync 4.5 is included in the Installation CD, which is compatible with the following operating systems and applications:

- o Microsoft® Windows® 2000 Service Pack 4
- o Microsoft® Windows® Server 2003 Service Pack 1
- o Microsoft® Windows® Server 2003 IA64 Edition Service Pack 1
- o Microsoft® Windows® Server 2003 x 64 Edition Service Pack 1
- o Microsoft® Windows® XP Professional Service Packs 1 and 2
- o Microsoft® Windows® XP Home Service Packs 1 and 2
- o Microsoft® Windows® XP Tablet PC Edition 2005
- o Microsoft® Windows® XP Media Center Edition 2005
- o Microsoft® Windows® XP Professional x64 Edition
- o Microsoft® Outlook® 98, Microsoft® Outlook® 2000 and Microsoft® Outlook® XP, and Microsoft® Outlook®

2003 messaging and collaboration clients
Microsoft® Office 97, excluding Outlook
Microsoft® Office 2000
Microsoft® Office XP
Microsoft® Office 2003
Microsoft® Internet Explorer 4.01 or later (required)
Microsoft® Systems Management Server 2.0

11.7 About this guide

This document is provided as a user guide to the MWg Zinc II Pocket PC Phone and to this system only. MWg Zinc II is a trademark of the MWg group of companies.

The latest version of the user guide can be found on our website: www.MWg.com

Year of Manufacturing:2008

Chapter 12

Specifications

Item	Specifications
System Information	
Operating System	Windows Mobile® professional
Processor	
Memory	256MB ROM 64MB RAM
Size	
Dimensions (mm)	109.9(L) x 59(W) x 18(T) mm
Weight (in grams)	Around 185g
Battery	
Battery capacity	1530 mAh, Li-Polymer
Standby time	GSM 200 - 260 Hours
Talk time	GSM 4 - 6 Hours
Charger	
Charger	100-240V AC Adapter / Mini USB Multiple Plug
Display Characteristics	
Type	TFT Flat LCD
Resolution	240 x 320 pixel
Band	
Band	HSDPA Triband EDGE / GSM Quad-band
Connectivity	
Bluetooth	2.0 + EDR
WLAN	802.11e/i (AES, WEP, TKIP)
GPRS	Class 10 : Type B
WAP	Yes
CSD	Yes
USB	Mini USB
Image	
Format	JPG, BMP, GIF, PNG
Max size (per)	Depend on available RAM
Audio	
Format	MIDI, MP3, WAV, AMR, AAC, ACC+
Max size	Depend on available RAM

Item	Specifications
Video	
Format	3GPP, MP4, RTSP
Max size	Depend on available RAM
Phonebook	
Size	Depend on available RAM
Ring tone	
Type	MIDI, MP3, WMA
Digital camera	
Type	CMOS
Camera	2 mega pixels
Auto focus	Yes
Video recording	Yes
Messaging	
Push E-mail	MS Push Mail
SMS	Yes
MMS	Yes
E-mail	Yes
Windows Live Messenger	Yes
External memory	
Type	Micro SD Card

Chapter 13 FAQs

Why can't I turn on my device as I press Power key? Either you didn't press the key long enough, or the device has shutdown because the battery power level is too low to make calls. Please recharge the battery.

How do I suspend the screen display or wake up the device? Press and hold Power key to turn off the device. If the screen display is off, press Power key to wake up your device.

Why does the screen freezes and does not respond to my commands or input?

Reboot the system to free up memory. The system shall operate more efficiently. If the system still lags after rebooting, you will need to clean boot your MWg Zinc II. To clean boot, power off your MWg Zinc II and then press down and hold Camera key and Power Key at the same time, for about 5 seconds. Your MWg Zinc II will reset to factory defaults and reboot.

Please note:

When you perform a clean boot on this device, all your personalized settings, information, and programs installed will be removed. The system will reset to factory defaults.

Why does my device display "INSUFFICIENT MEMORY" when I open a file or a program? The device memory is shared by both storage and programs. You can free up some memory by removing some of the rarely used programs you installed or removing rarely used files.

How can I free up RAM memory?

You can free up RAM memory by closing the programs that are running in the background. Tap the MWg Menu icon on the bottom of Today screen to view all the running programs. You could close the programs you do not need to use.

Why doesn't the screen respond accurately to my stylus taps? Tap **Start > Settings > System tab > Screen > General tab**. Select **Align Screen** to align the screen.

Why does my MWg Zinc II launch wrong programs or ignore my command when I press a device key? Tap **Start > Settings > Personal tab > Buttons** and check whether the programs assigned to each key is correct. You can change these key assignments by preference.

My MWg Zinc II can't form a successful connection with ActiveSync. Please make sure you have installed **ActiveSync 4.5** or later on your computer. You can find **ActiveSync** in the installation CD, or you can download the latest version from Microsoft's website. Please make sure you have connected your MWg Zinc II to the computer by plugging in the USB cable to both your MWg Zinc II and the computer. Make sure that you are not running another program that uses the same serial port. If the connection still fails, remove ActiveSync on your computer and reinstall it.

Why does my device display 'Insert SIM', what does this mean?

Please insert the SIM card before you can use the device. If it is already installed, remove and clean the metal contacts area with a dry cloth, and then insert it again.

Why does my device display 'EMERGENCY ONLY', what does this mean?

You may not have your SIM card properly installed, or you are out of network range.

Why does my device display 'NO NETWORK', what does this mean?

You're outside network range. If you're inside a building or a basement, try moving towards a window.

Why are there double entries in my Contacts list?

You may have selected Show SIM Contacts in Contacts menu. If you have already copied your SIM contacts to the device, then you do not need to select this option.


I found that some calls are not processed, why does it happen?

Certain call barring function may have been set to restrict phone usage. Check the call barring status and cancel it as necessary.

Can I send and receive emails and surf the Mobile Internet on my device?

Your MWg Zinc II allows you to access the Internet from your device. For sending and receiving emails, please refer to the user manual or contact MWg Customer Service.

Why can't my device make any sound alerts?

Tap on the speaker  icon on the top right corner of the screen, and then adjust the alert or ring volume. You could also use the volume key on the left side of the device to adjust volume.

Where can I check why my device has gone wrong?

Please have your warranty card and device ready and contact your local dealer.

Why do I need to upgrade / reflash my ROM?

A ROM upgrade/ Reflash may help to solve the following issues—slow response, no response, device freeze and drop calls"

Where can I find the Rom upgrade?

You can go to www.MWg.com an look under 'Support'.

MWG WARRANTY CARD

CONGRATULATIONS ON THE PURCHASE OF THIS MWg PRODUCT.

ON-LINE HELP

If you have any questions about your MWg device, please visit our website at www.mwg.com and click Tutorials User tips. You can also contact our Helpdesk by completing the form Support Contact Us Helpdesk.

WARRANTY

We warrant that your MWg device is at the time of its original purchase free of defects in materials and workmanship. For Limited Warranty Statement, please go to www.mwg.com and select your device within the "Support". To claim warranty service, please go to www.mwg.com and select Support Contact Us Collection Points.

PLEASE DO NOT REMOVE THIS PAGE. COMPLETE THE SALES RECORD ON THE NEXT PAGE. YOU WILL NEED TO PRESENT THIS BOOKLET AND PROOF OF PURCHASE AT THE COLLECTION POINT, IF YOU REQUIRE WARRANTY SERVICE.

CUSTOMER SALES RECORD

NAME: _____

IMEI NUMBER: _____

MAKE & MODEL: _____

DATE OF PURCHASE: _____ / _____ / _____

DEALER SIGNATURE AND STAMP

COMPLETE THE SALES RECORD WITH DEALER STAMP. PRESENT THIS BOOKLET AND YOUR PROOF OF PURCHASE AT THE COLLECTION POINT IF YOU NEED REPAIR OR SERVICE.