

INSTRUCTION MANUAL



数码说明书之家

2005.08.27

WWW.54GG.COM

数码说明书之家

2005.08.27

WWW.54GG.COM

Vivitar[®]
VIVICAM 3555
DIGITAL CAMERA

Contents

Electromagnetic Compatibility Notice.....	4
Caution.....	4
Precautions.....	5
About batteries.....	5
Camera Features.....	5
System Requirements.....	6
Package Contents.....	7
Nomenclature.....	7
Installing Batteries.....	9
Preparing to take Images (digital photos).....	9
Inserting a Compact Flash (CF) card.....	9
Removing a Compact Flash (CF) card.....	10
Turning the Camera on / off.....	11
Setting up Your Camera.....	11
SETUP MENU (Date/Time, Language, Sound, Format Media, Auto Power Off).....	11
RECORD MENU (LCD Brightness, Quick View, White Balance, EV Compensate, Light Frequency).....	12
Selecting Shooting Mode (Normal versus Rapid Fire (Burst) mode) and Resolution.....	13
Selecting Flash Mode.....	14
Selecting Timer Mode.....	14
Taking an Image.....	15
Recording a Movie (without sound).....	15
Reviewing Images on the LCD monitor.....	15
Displaying Image Information.....	15
Viewing Multiple Images.....	16
Displaying PLAY MENU.....	16
Reviewing movies on the LCD monitor.....	17
Displaying movie Information.....	17
Displaying PLAY MENU.....	17
Erasing Images/movies.....	18
Formatting Media.....	18

Connecting Camera to TV.....	18
Connecting Camera to PC (PC mode).....	19
Installing Arcsoft programs and camera drivers for Windows 98SE/Me.....	19
Installing camera drivers	19
Downloading Images/ Movies from Removable Disk.....	19
Playing back Downloaded Movies.....	19
Locating the Video Driver.....	19
Installing Arcsoft Programs and Camera drivers - Windows 2000/XP.....	20
Installing camera drivers	20
Downloading Images / Movies from Removable Disk.....	21
Playing back Downloaded Movies.....	21
Locating the Video Driver.....	21
Downloading Images using PhotoStudio.....	21
Using PhotoPrinter.....	22
Using PhotoFantasy.....	23
Using your Digital Camera as a PC camera.....	23
Additional Information.....	24
Reviewing the User's Manual on the CD ROM.....	24
Installing Acrobat Reader.....	24
Uninstalling Arcsoft programs.....	24
Troubleshooting.....	25
Product Specifications.....	26
Trademark Acknowledgements.....	26

Electromagnetic Compatibility Notice

This device complies with Part 15 of the FCC rules. Operation is subject to the following two conditions:

- (1) This device may not cause harmful interference, and
- (2) This device must accept any interference received, including interference that may cause undesired operation.

Warning: Changes or modifications to this unit not expressly approved by the party responsible for compliance could void the user's authority to operate the equipment.

This equipment has been tested and found to comply with the limits for a Class B digital device, pursuant to Part 15 of the FCC rules. These limits are designed to provide reasonable protection against harmful interference in a residential installation. This equipment generates, uses, and can radiate radio frequency energy, and if not installed and used in accordance with the instructions, may cause harmful interference to radio communications. However, there is no guarantee that interference will not occur in a particular installation.

If the unit does cause harmful interference to radio or television reception, which can be determined by turning the equipment off and on, the user is encouraged to try correcting the interference by one or more of the following measures:

Re-orient or relocate the receiving antenna.

Increase the separation between the equipment and receiver.

Connect the equipment into an outlet on a circuit different from that to which the receiver is connected.

Consult the dealer or any experienced TV/radio technician for help.

NOTE:

Shielded cables are used with this unit to ensure compliance with the Class B FCC limits.

A high electrostatic discharge environment may cause the camera to malfunction. Reset the camera by taking out the batteries and re-inserting them.

Caution

In order to maintain compliance with FCC regulations, shielded cables must be used with this equipment. Operation with non-approved equipment or unshielded cables is likely to result in interference to radio and TV reception. To comply with the limits for a class B digital device, pursuant to part 15 of the FCC rules, this device must only be installed on computer equipment certified to comply with the Class B limits.

In addition, only the supplied USB cable should be used with the product. Operation with non-certified computers, use of a cable other than that supplied, or modification of the device may result in interference to radio or television reception and could void the user's authority to operate this device.

Precautions

Thank you for purchasing the Vivicam 3555 Digital Camera. Please read the following precautions carefully before using the product.

- This camera is not water-resistant and should not be used outdoors in snow or rain. If accidentally dropped in water, please quickly pour out the water. Dry it with sunlight or an air-blower.
- Protect the camera from excessive humidity. It will fog the lens and images will be blurred.
- Do not expose the camera to sand or dust
- Do not attempt to disassemble the camera yourself. Always send it to an authorized service facility for repair.
- To store the camera, wrap it in a clean, soft cloth and place it in a cool, dry, dust-free place. Do not store the camera directly under the sun or in extreme heat.
- Take care of the lens. Use a soft, damp cloth to clean it.
- Do not scratch the Lens, Status LCD Panel, LCD Monitor or Viewfinder.
- If the Status LCD Panel or LCD Monitor is damaged, do not touch it.
- Condensation is a problem when bringing cold equipment into a warm room. Place the camera in a plastic bag so condensation forms on the outside of the bag.

About Batteries

- Battery life is shorter for poor quality alkaline batteries. If you frequently use the LCD monitor and flash, you should use good quality batteries (e.g. Energizer alkaline batteries). High power NiMH rechargeable batteries (1300mAh or higher) are recommended.
- If the camera fails to start after inserting new batteries (nothing appears on the Status LCD panel), the batteries may be inserted in wrong orientation.
- The batteries may explode or cause burns if disassembled, recharged, shorted, exposed to high temperature, or disposed of in a fire.
- Alkaline or NiMH batteries can be used with this camera. The camera may not function properly if you use poor quality batteries.
- Make sure all batteries are fresh, or fully charged.
- Ensure that the battery orientation is correct when placing them in the camera
- Batteries may feel warm after being used for some time.
- Remove the batteries if you will not use the camera for one month or longer.

Camera Features

1. High speed processor with full functions
2. SXGA resolution (1280 x 1024)
3. Lens with large aperture (F2.8)
4. Short shot-to-shot time
5. Two resolution levels (SXGA and VGA) and three quality settings
6. 1.4-inch color LCD monitor (240 x 160 dots)

7. USB connectivity to your PC
8. Built-in flash (Auto, On, Off and Red-Eye Reduction modes)
9. Compatible with Compact Flash memory cards (type1) - to 128MB
10. Tripod mounting socket
11. 4 x AA alkaline batteries
12. Exposure Compensation (-1.5 to +1.5 eV)
13. White Balance (Auto, Daylight, Incandescent, Fluorescent 1 or Fluorescent 2)
14. 2X Digital Zoom (VGA resolution)
15. Quick View (View image after capture, before saving to CF memory card)
16. Video output port for TV display (NTSC or PAL, selectable)
17. Slide show mode
18. Folder selection (DCF compatible)
19. File Protection
20. Date/Time setting
21. LCD monitor display in 7 languages
22. Auto power off - to save batteries
23. Image erasure on LCD monitor
24. Movie taking without sound

System Requirements

- Personal computer with a Pentium 300MHz microprocessor (minimum) and a CD-ROM drive
- Windows 98SE / Me / 2000 / XP*
- 32MB RAM for Windows 98SE, 64MB RAM for Windows Me/2000, 128MB RAM for Windows XP
- 500MB of available hard disk space for Windows 98SE/Me/2000, 1GB for Windows XP
- Color display monitor with 16 bit color (24 or 32 bit preferred) or above
- Available USB port

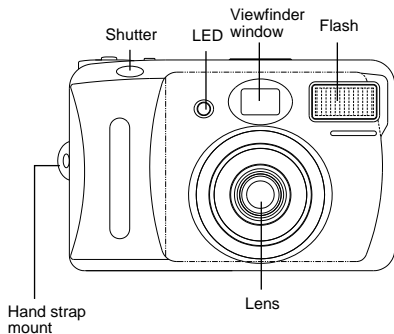
* It is recommended that Windows XP users set a restore point before installing camera drivers

Package Contents

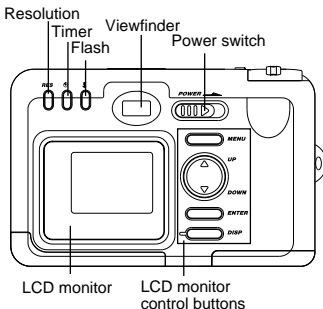
- Vivicam 3555 Digital Camera
- Program CD (Application Software, User's Manual, camera drivers)
- USB cable
- TV cable
- Quick Start Guide
- User Manual, Printed
- Warranty Card
- Hand Strap
- Alkaline Batteries (AA - four)
- 16MB Compact Flash Card

Nomenclature

Front panel



Back panel



POWER: Turns camera on / off

RES: Changes resolution - between high and low resolution, and capturing mode

Timer: Turns timer (10-second delay) on / off

Flash: Toggles between Auto, Red-Eye Reduction, On, or Off modes

LCD Monitor Control Buttons:

MENU: Displays various menus on LCD monitor

UP: Navigates upward in the menus

DOWN: Navigates downward in the menus

ENTER:

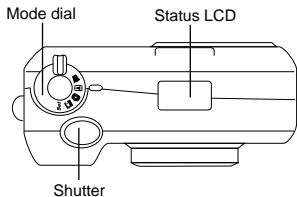
- Confirms item selection
- Zooms in (in Record mode)

DISP:

- Turns LCD monitor on / off (in Record mode)
- Toggles among full screen, full screen with image information and 3 x 3 thumbnails display (in Play mode)

- Toggles between full screen and full screen with movie information (in Movie Playback mode)

Top panel

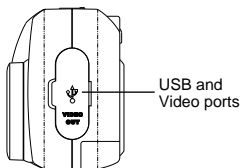


Mode dial:

- Record mode : For taking images / movies
- Play mode : For reviewing images / movies you have taken
- Setup mode : For setting various parameters and values
- Erase mode : For erasing images / movies you have taken
- PC mode : For downloading photos / movies / using as web camera

Shutter: Takes images (digital photos) / movies

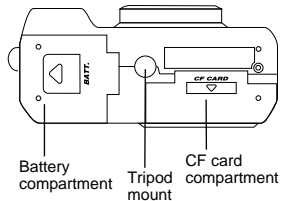
Side panel



USB Port: For connecting to your PC

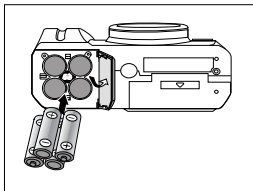
Video Port: For connecting to a television, projector, tape player, or other device with a Video input

Bottom panel



Installing Batteries

1. Lift open battery compartment cover
2. Insert 4 AA alkaline batteries into the battery compartment. Make sure the polarities are oriented exactly as shown in the following figure.



3. Close battery compartment cover

NOTE:

- If battery power is cut off, some of the settings will be reset to their default values. For example, date and time will be reset to 01/01/00 12:00.
- The battery icon will blink when battery power is low. Replace old batteries with new batteries immediately.

CAUTION – To avoid battery leakage

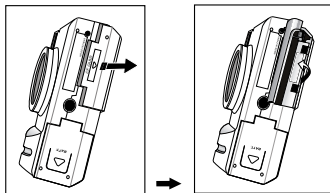
- Non-rechargeable batteries are not to be recharged
- Be sure to insert batteries in correct orientation
- Remove batteries from the camera before extended storage
- Always remove old or dead batteries from the camera
- Do not short-circuit the power supply terminals
- Check that the contact surfaces are clean and bright before installing batteries

Preparing to take Images (digital photos)

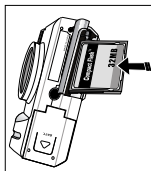
Inserting a Compact Flash (CF) card

NOTE: The Vivicam3555 has 400KB built-in flash memory, which is enough to store a few images at the lowest resolution. Therefore, a CF card is required for normal use.

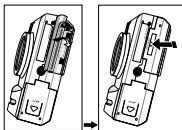
1. Open the CF card compartment cover:



2. Orient the CF card as shown in the diagram and insert it fully into compartment. **If the CF card will not insert easily, please try the other side. DO NOT force the CF card in as this may break it your camera.**

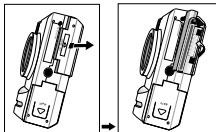


- Close the CF card compartment cover



Removing a Compact Flash (CF) card

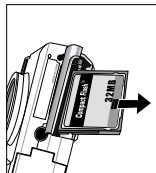
- Make sure camera power is turned off
- Open the CF card compartment cover



- Push the ejector button inward to release the CF card



- Carefully remove the CF card



- Close the CF compartment cover

CF Memory Card Capacity:

The (approximate) numbers of images that may be stored on a CF card depends upon the camera resolution and image quality settings. The following table estimates the number of images that may be stored on a CF card of various capacities:

	16MB	32MB	64MB
FULL ***	15	30	60
FULL **	30	60	120
FULL * or HALF ***	60	120	240
HALF **	120	240	480
HALF *	240	480	960

Note: FULL = SXGA (1280 x 1024) resolution, HALF = VGA (640 x 480) resolution

*** = High quality

** = Normal quality

* = Economy quality

NOTE:

- These are estimates. The actual number of images will vary depending on scene (image) complexity.
- Only CF type 1 cards can be used in this camera.
- The use of quality CF memory cards is recommended.
- Compatibility with all CF memory cards is NOT guaranteed.
- If a CF card is inserted after camera is powered on, you need to power the camera off and on again to align the frame number shown on the Status LCD and the CF card memory size.

Turning the Camera on / off

To power-on the camera, slide the **POWER** switch to the right and hold momentarily until icons appear on the Status LCD.

To turn off camera, slide the **POWER** switch to the right momentarily and hold until icons disappear from the Status LCD.

NOTE: If there is no camera operation for a period of time after the camera is powered on, the camera will automatically turn off.

Setting up Your Camera

Navigating menus displayed on LCD monitor:

- Press the **UP** or **DOWN** buttons to highlight an item or change a value
- Press **ENTER** button to confirm, or move to the next item

To display the SETUP MENU:

1. Turn **Mode** dial to **SET** mode to display the **SETUP MENU**

SETUP MENU (Date/Time, Language, Sound, Format Media, Auto Power Off)

Date / Time: Month/Day/Year Hour: Minute format

Language: Selects display language

Sound: Sets beeper on or off during operation

Format Media: Erases all information on CF card and built-in memory

Auto Power Off: Sets time duration for auto power off

Additional Detail of Menu Selections**Date / Time**

Enter the current date and time so that image files are recorded (time-stamped) and stored with date and time of capture.

Language

You may select a language for the information shown on LCD monitor. Select from: English, French, German, Spanish, Japanese, Portuguese, and Italian. English is the default language.

Sound

You can set the camera to beep (or not) when you press a button.

Format Media

Formatting will erase all images and data on the CF card or built-in memory. Note that deleted files cannot be recovered!

Auto Power Off

With the camera on, if there is no operation for a period of time, the camera will automatically turn off. You may set the power-down time interval to one, two, or three minutes.

To display the RECORD MENU:

1. Turn the **Mode** dial to **Record** mode
2. Press the **MENU** button to display the **RECORD MENU**

RECORD MENU (LCD Brightness, Quick View, White Balance, EV Compensation, Light Frequency)

LCD Brightness: Changes the display from -5 to +5 in steps of 1

Quick View: Sets instant replay mode on / off

White Balance: Sets white balance Auto, Daylight, Incandescent, Fluorescent 1 or Fluorescent 2

EV Compensation: Changes from -1.5eV to +1.5eV in steps of 0.3

Light Frequency: Adjust for indoor lighting frequency of 50Hz or 60Hz

Additional Detail of Menu Selections

LCD Brightness

You may adjust the brightness of the LCD monitor to work within the ambient environment. To view images on the LCD monitor indoors, you may use the default value (0). For viewing outdoors, you may wish to select a larger value and increase the LCD brightness.

Quick View

This function allows you to review an image immediately after taking it (for three seconds) during which **iDelete** will be shown on LCD monitor. If you do not like the image, you may press the **ENTER** button during the 3-second interval to delete the image and it will not be saved to memory.

White Balance

A digital camera is different from human eyes, which can see a white object in almost any lighting condition. The camera is designed to automatically update the color processing algorithms to reproduce a true-color image. However, you may specify White Balance conditions, selecting from Automatic, Daylight, Incandescent, Fluorescent1 (Daylight fluorescent lamps) or Fluorescent2 (warm white fluorescent lamps). Note: White balance settings are deactivated in when the flash is used.

EV Compensation

If the background is too bright (e.g. sunny day, in snowy mountains), the exposure for the main subject may be too low. You may desire to override the automatic exposure settings and decrease the EV Compensation value. Conversely, if the background is too dark (e.g. against a black wall), you may wish to decrease the EV Compensation value. Note: An change of +1 eV doubles the exposure.




Light Frequency

If you plan to use your digital camera as a web camera, you may need to select the light frequency that matches the AC power frequency of the country in which you are using the camera. For example, the AC frequency for the USA is 60Hz, whereas European countries are 50Hz.

Selecting Shooting Modes

You can select **Normal Photo Shooting mode**, **Rapid Fire (Burst) mode** and **Movie Mode**

1. Set the camera to **Record** mode
2. Press **RES** button and icon display on Status LCD panel changes as follows:

FULL * ==> FULL *  ==> FULL *  ==> HALF ***
==> HALF ** ==> HALF * ==> HALF *  ==> FULL *** ==> FULL **

Where:


FULL = SXGA at 1280 x 1024


HALF = VGA at 640 x 480

*** = High quality

** = Normal quality



* = Economy quality

 = Rapid Fire mode


 = Movie mode

Remarks:




Rapid Fire (burst) mode

By selecting  FULL * or  HALF *, the camera is set to the **Rapid Fire** mode. In this mode you can press and hold the **Shutter** button to take continuous, sequential images until all available memory in the camera CF card is used up. To stop, release the **Shutter** button. **NOTE:** It is recommended that flash be disabled when using Rapid Fire mode as it takes time to recharge the flash whereby inhibiting the burst rate.

Movie mode

By selecting FULL * , the camera is set to **Movie** mode. In this mode you can take movies with your digital camera. No sound can be recorded in the movies.

Selecting Flash Mode

1. Make sure camera is set to the **Record** mode
2. Press the **Flash** button repeatedly and the icons on the Status LCD panel will change as follows:
 (Red-Eye Reduction) =>  (Flash On) =>  (Flash Off)
=> No icon (Auto Flash)

Remarks:

The camera defaults to Auto Flash.


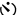
Auto Flash: Flash fires according to lighting conditions (automatically)

Flash on: The flash is forced to fire. You can use this mode if your intended subject is subject to backlighting.

Flash off: The flash is suppressed. You can use this mode when an object is too far for flash to have any effect. Turning the Flash to OFF will save battery power and to reduce the shot-to-shot time interval.

Red-Eye Reduction: This reduces the red-eye effect in your subject's eyes when photographing in low light conditions where the flash is used. The camera will fire a pre-flash sequence and then fire a normal flash to take the image.

Selecting Timer Mode

1. Make sure the camera is in the **Record** mode
2. Press the **Timer** button to invoke Timer mode.  will display on the Status LCD panel
3. Press the **Timer** button again to turn off **Timer** mode.  will disappear from the Status LCD panel

Remarks:

When the Timer mode is activated, an image will be taken 10 seconds after the Shutter button is pressed. During the 10-second period, the front LED will blink until the photo is taken. A beep-tone will be generated from the 7th to the 9th second.

Taking an Image

1. Look through the **Viewfinder**

Remarks:

LCD monitor

You can press the **DISP** button to turn on the LCD monitor. What you see through viewfinder will also appear on the LCD monitor.

2X Digital Zoom


To invoke 2X Digital Zoom, turn on LCD monitor and press the **ENTER** button. The image on LCD monitor will be zoomed to twice (2X) its size. To zoom back out, press the **ENTER** button again.

NOTE: Image resolution will automatically revert to HALF * when 2X Digital Zoom is activated.

2. Press the **Shutter** button to take the image

NOTE: After the **Shutter** button is pressed, "busy" will display on Status LCD panel and two beeps will sound as the image is processed and saved to memory. Wait until the frame counter, (which indicates the number of images that can be taken), updates on the display before taking next image.


Recording a Movie (without sound)

1. Make sure a CF card with available memory is inserted in the camera
2. Press **RES** button repeatedly until  appears on Status LCD
3. Press **Shutter** button to start shooting a movie without sound. "rec" starts blinking on Status LCD
4. Press **Shutter** button again to stop shooting

NOTE:

- A CF card must be used when taking a movie.
- Approximately, the maximum length of one movie clip is 15 seconds. You can take movies until the memory is used up.

Reviewing Images on the LCD monitor

1. Turn the Mode dial to Record mode. Make sure the camera is set to photo-taking mode. (i.e. no  is shown on Status LCD)
2. Turn the **Mode** dial to the **Play** mode. The last image taken will appear on the LCD monitor.
3. Press the **UP** or **DOWN** buttons to review other images.

- **Displaying Image Information**

To display image information, press the **DISP** button once

- **Viewing Multiple Images**

To display multiple image thumbnails, press the **DISP** button twice

- **Displaying PLAY MENU**

To display **PLAY MENU**, press the **MENU** button

PLAY MENU:

LCD Brightness: Changes from -5 to +5 in steps of 1

Video Mode: Selects NTSC or PAL, to match your TV system

Slideshow: Sets delay interval from one to ten seconds

Folder: Selects a folder to review

Protect Files: Protects photos against inadvertent erasure

Remarks:

LCD Brightness

You may adjust the brightness of the LCD monitor to suit environmental conditions. To view images on the LCD monitor indoors, use the default value (0). For viewing outdoor, you try a larger value.

Video Mode

Before viewing photos on your TV, select the video mode that matches your TV system. NTSC is common in USA and Japan. PAL is common in European countries.

Slideshow

You can specify the delay interval for a slide show from one to ten seconds. After a delay time is selected and the **ENTER** button is pressed, the slide show will begin. To stop a slide show, press the **ENTER** button.

Folder

If you have more than one image file folder, you may select the folder you wish to review.

Initially, a sub-folder named "100cnxnt" is created in a main folder 'Dcim' on the Compact Flash (CF) card. You may create other folders on the CF card to organize the photos you have taken.

To create a folder on a CF card:

1. Connect camera to your computer
2. Rotate the **Mode** dial to **PC** mode
3. Power on camera
4. Double-click "My Computer" icon on computer
5. Look for "Removable Disk" icon and double-click on it
6. Double-click "Dcim" folder. You should see a folder named "100cnxnt"
7. Click File > New > Folder from pull-down menu to create a new folder
8. Rename the folder in format "xxxxyyyy" where 'xxx' can be any number from 100 to 999 and 'yyyyy' can be a combination of alphabets (A to Z) and numbers (0 to9). For example, you may create a folder named "105home1" (Note: The folder name must contain a total of 8 characters)

After folders are created, you can rearrange your photos into different folders. Then close the "My Computer" screen.

To review the images on your camera:

1. Rotate **Mode** dial to **Play** mode
2. Power the camera off and on again
3. Press the **MENU** button
4. Press the **DOWN** button to select a **Folder** and press the **ENTER** button
5. Press the **UP** or **DOWN** buttons to select the folder you wish to review and press the **ENTER** button
6. Press **UP** or **DOWN** button to review images

NOTE:

Any new images taken will be stored in the folder with largest prefix 'xxx'. For example, suppose there are two folders: 105home1 and 100party, the folder named 105home1 will be used to store any new images subsequently taken.


Protect Files

This function protects important images against accidental erasure. You may protect the current image or all images. A "lock" icon will appear in the upper left corner of the LCD monitor when a protected image is reviewed along with its information.

NOTE:

Four short beeps will sound if you attempt to erase a protected image.
Protected images will still be erased when the storage media (built-in memory or CF memory card) is formatted.

Reviewing movies on the LCD monitor

1. Turn the **Mode** dial to **Record** mode. Press **RES** button repeatedly until  appears on Status LCD
2. Turn the **Mode** dial to the **Play** mode. A snapshot of the last movie taken will appear on the LCD monitor.
3. Press **Shutter** button to start the movie playback
4. When playback stops, press the **UP** or **DOWN** buttons to review other movies.

- **Displaying movie Information**

To display movie information, press the **DISP** button once

- **Displaying PLAY MENU**

To display **PLAY MENU**, press the **MENU** button

PLAY MENU:

LCD Brightness: Changes from -5 to +5 in steps of 1

Video Mode: Selects NTSC or PAL, to match your TV system

Remarks:

LCD Brightness


You may adjust the brightness of the LCD monitor to suit environmental conditions. To view images on the LCD monitor indoors, use the default value (0). For viewing outdoor, you try a larger value.

Video Mode


Before viewing photos on your TV, select the video mode that matches your TV system. NTSC is common in USA and Japan. PAL is common in European countries.

Erasing images / movies

To erase an image:

- Turn the **Mode** dial to **Record** mode. Make sure the camera is set to photo-taking mode. (i.e. no  is shown on Status LCD)
- Then follow step 1 to 7 below

To erase a movie:

- Turn the **Mode** dial to **Record** mode. Press **RES** button repeatedly until  appears on Status LCD
 - Then follow step 1 to 7 below
1. Turn the **Mode** dial to the Erase mode
 2. Press the **UP** or **DOWN** buttons to locate the image you wish to erase
 3. Press the **MENU** button to display the **ERASE MENU**
 4. Press the **UP** or **DOWN** buttons to select **Erase Current** (image) or **Erase All** (images)
 5. Press the **ENTER** button
 6. Press the **UP** or **DOWN** buttons to select **YES** or **NO**
 7. Press the **ENTER** button

Formatting Media

Alternatively, you may erase all images on a CF card (or built-in memory) by formatting it.

1. Turn the **Mode** dial to **SET** mode to display the **SETUP MENU**
2. Press the **UP** or **DOWN** buttons to highlight **Format Media**
3. Press the **ENTER** button
4. Press the **UP** button to select **YES**
5. Press **UP** or **DOWN** buttons to answer **YES** or **NO** to the question "Reset Image No.?"
6. Press the **ENTER** button

NOTE:

If you select "YES" for "Reset Image No.?", the next image taken (after formatting) will be numbered 1. If you select "NO", the next image taken (after formatting) will follow the numbering sequence before the media was formatted. For example, if three images were taken before formatting, after choosing "No" for "Reset Image No.?", the next image taken will be numbered 4.

Connecting Camera to TV

1. Connect your camera to a TV with the included TV video cable
2. Turn on the TV and select the appropriate Video Input channel to which camera is connected
3. Power on the camera

NOTE:

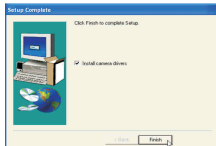
- You may review taken images or recorded movies or see a live image on TV as you would on the camera's LCD monitor, if the connection is made correctly.

Connecting Camera to PC (PC mode)

Installing Arcsoft programs and camera drivers for Windows 98SE/Me

NOTE: The following graphics are based on the user interface of Windows 98SE

1. Put the program CD into the CD-ROM drive, it will Autorun
2. Select your desired language
3. Change Destination Folder, if necessary
4. Select components to install
5. Change program folder name, if necessary
6. Check the checkbox to start camera drivers installation(Win 98SE)



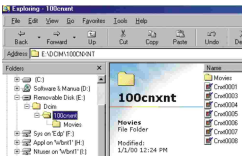
Installing camera drivers

7. When the installation is complete, restart your computer
8. After your computer has restarted, power-on your camera
9. Turn **Mode** dial to **PC** mode. "PC" appears on Status LCD panel.
10. Connect camera and computer with the USB cable
11. "**Removable Disk**" will automatically be installed in your computer. Several screens will appear momentarily.
12. When the "Removable Disk" installation is complete, press **MENU, DOWN, ENTER** buttons on camera to select **Silent Video** mode
13. The Video driver will be installed in your computer
14. The drivers installation is complete.

Note: The installed camera driver may conflict with other USB devices in your computer system. Contact technical support for assistance.

Downloading Images / Movies from Removable Disk

1. Make sure the camera is connected to your computer and is in **Mass Storage** mode. Press **MENU, UP, ENTER** buttons on camera if necessary.
2. Open Windows Explorer on computer
3. Search through **Removable Disk > Dcim > 100cnxnt** and double-click **100cnxnt** folder
4. Image files that you have taken will be shown directly in the right pane, while the movie files are stored in the Movies folder



5. You can transfer your image / movie files by copying and pasting them to your computer hard disk.

Playing back Downloaded Movies

1. Locate the movie file you want to playback
2. Double-click the file and the .MOV file will be opened with its associated application

NOTE: Programs for playing .MOV files are NOT included in this camera package. You have to install those programs on your computer before you can playback your downloaded movies.

Locating the Video Driver

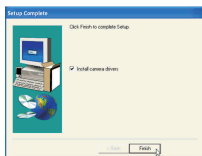
1. Make sure camera is connected to your computer and the camera is in **Silent Video** mode. Press **MENU, DOWN, ENTER** buttons on the camera, if necessary.

- Search through **Start > Settings > Control Panel > System > Device Manager > Imaging Devices** and you should find the installed video driver for your camera - **Raptor 1.3 CMOS DSC**

Installing Arcsoft Programs and Camera drivers - Windows 2000/XP

NOTE: The graphics shown are based on the Windows XP user interface

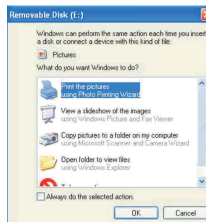
- Put the program CD into the CD-ROM drive, it will Autorun
- Select your desired language
- Change Destination Folder if necessary
- Select components to install
- Change program folder name if necessary
- Check the checkbox to start camera drivers installation



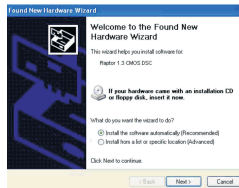
Installing camera drivers

- When installation is complete, restart your computer
- After your computer is restarted, power up your camera
- Turn the **Mode** dial to **PC** mode. "PC" will appear on Status LCD panel.
- Connect camera and computer with the USB cable

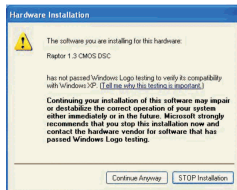
- The following screen will appear to indicate that **Removable Disk** has been installed in your computer. Click **Cancel** button to move on to video driver installation.



- Press the **MENU, DOWN, and ENTER** buttons on the camera to select **Silent Video** mode and wait for the following screen to appear. Select the first radio button and click **Next** button to start video driver installation.



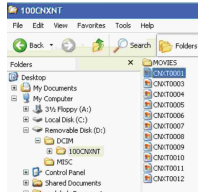
13. Click **Continue Anyway** button (for Win XP) or **Yes** button (Win 2000) when you see this warning message:



14. The drivers installation is complete.

Downloading Images / Movies from Removable Disk

1. Make sure camera is connected to your computer and is in **Mass Storage** mode. Press **MENU, UP, ENTER** buttons on the camera if necessary.
2. Open Windows Explorer on My Computer
3. Search through **Removable Disk > Dcim > 100cnxnt** and double-click **100cnxnt** folder
4. Image files that you have taken will be shown directly in the right pane, while the movie files are stored in the Movies folder



5. You can download your image / movie files by copying and pasting them to your computer hard disk.

Playing back Downloaded Movies

1. Locate the movie file you want to playback
2. Double-click the file and the .MOV file will be opened with its associated application

NOTE: Programs for playing .MOV files are NOT included in this camera package. You have to install those programs on your computer before you can playback your downloaded movies.

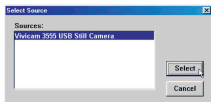
Locating the Video Driver

1. Make sure camera is connected to your computer and is in **Silent Video** mode. Press **MENU, DOWN, ENTER** buttons on camera if necessary.
2. Search through **Start > Control Panel > System > Hardware > Device Manager > Imaging Devices** and you should find the installed video driver for your camera - **Raptor 1.3 CMOS DSC**

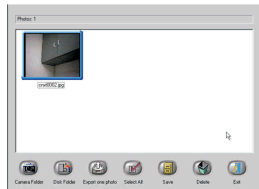
Downloading Images using PhotoStudio

NOTE: The graphics shown are based on the user interface in Windows 98SE

1. Take some images with your digital camera
2. Connect the camera to the computer with the USB cable
3. Search through **Start > Programs ("All Programs" for Windows XP) > Vivacam 3555 Digital Camera Suite** and click **PhotoStudio 2000** icon
4. Select **File** and click **Select Source** icon from the pull-down menu and select **Vivacam 3555 USB Still Camera**. Make sure your camera is in **Mass Storage** mode and connected to your computer.



5. Search through **File** and click **Acquire** icon
6. The following window will appear:



From the bottom of the above screen:

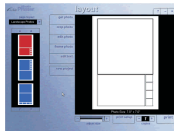
- Click **Camera Folder** icon to set the camera / source folder
 - Click **Disk Folder** icon to view/change the folder to which the photos will be copied. The default folder is C:\WINDOWS\Desktop\My Photos
7. Highlight the images you want to save (or click **Select All** icon to highlight all photos) and click **Save** icon. The highlighted images will be saved to the folder on your computer, as specified.

NOTE: If you want to learn more about PhotoStudio, you can consult its on-line help which is accessible by clicking "?" icon or "**Help**" on the pull-down menu.

Using PhotoPrinter

NOTE: The graphics shown are based on the user interface in Windows 98SE.

1. Search through **Start > Programs ("All Programs" for Windows XP) > Vivicam 3555 Digital Camera Suite** and click **PhotoPrinter 2000 Pro** icon



2. To print images from your digital camera, click **get photo** icon on the **layout** window and click **acquire photo** icon on the **get photo** window. If you want to print a photo already on your hard disk or other storage medium, click **add photo** icon on **get photo** window

NOTE: Refer to "**Downloading photos by using PhotoStudio**" section for more details.

3. When an image thumbnail has been added to the **get photo** window, double-click the thumbnail. Set print options available and print the photo.



NOTE: If you want to know more about PhotoPrinter, consult its on-line help which is accessible by clicking the "?" sign on the windows' upper right corner.

Using PhotoFantasy

NOTE: The graphics shown are based on the user interface in Windows 98SE.

1. Search through **Start>Programs ("All Programs" for Windows XP) > Vivacam 3555 Digital Camera Suite** and click **PhotoFantasy 2000** icon



2. Click the **Get Fantasy** icon on the main screen to select a template for your photo to put on. You need to put the supplied program CD to the CD-ROM drive to view the sample photos.
3. Click **Get photo** icon on the main screen to select a photo. To select a photo from your digital camera, click **Acquire** icon on the **get photo** window. If you want to select a photo already on your hard disk or other storage medium, click Add icon on **get photo** window.

NOTE: Refer to "**Downloading photos by using PhotoStudio**" section for more details.

4. You may modify your images with the available functions



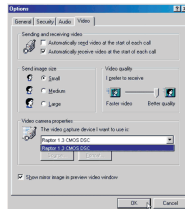
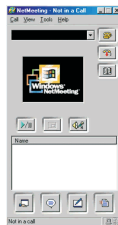
NOTE: If you want to know more about PhotoFantasy, consult its on-line help which is accessible by clicking the "?" sign on the windows' upper right corner.

Using your Digital Camera as a PC camera

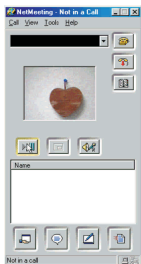
1. Set up an account with Windows NetMeeting (or other similar program)
2. Power up your camera and connect it to the computer. Press **MENU, DOWN, ENTER** buttons to select **Silent Video** mode.

NOTE: Make sure **Light Frequency** has been set (from **RECORD MENU**) according to the AC frequency of the country in which you are using the camera. For example, the AC frequency for the USA is 60Hz and Europe is 50Hz.

3. Start Windows Net Meeting (or similar program)
4. Click **Tools>Options** from the pull-down menu
5. Click **Video** tab, select your installed camera from **Video Camera Properties** drop-down box and click **OK** button



6. Click **Start Video** icon and you should see a live picture.



7. Click **Stop Video** icon (same as the **Start Video** icon) to end.

Additional Information

Reviewing the User's Manual on the CD ROM

1. Search through **Start > Programs ("All Programs" for Windows XP) > Vivicam 3555 Digital Camera Suite** and click on the **User Manual** icon.
2. The User's Manual will open provided Acrobat Reader has been installed on your computer. If necessary, take the following steps to install Acrobat Reader

Installing Acrobat Reader

- Insert the supplied program CD in the CD-ROM drive
- Locate the file named **ar40eng.exe** at the root level of the program CD
- Double-click **ar40eng.exe** icon and follow the installation instructions

Uninstalling Arcsoft Programs

1. Search through **Start > Programs ("All Programs" for Windows XP) > Vivicam 3555 Digital Camera Suite** and click **Uninstall** icon.
2. Follow any on-screen instructions.

Troubleshooting

Before you decide the camera is faulty, check the following -

1. No Power
 2. No image is taken
 3. Can't use flash
 4. Image too dark with flash
 5. Image is blurred
 6. Can't erase an image
 7. LCD monitor is off
 8. No display on status LCD
 9. "Card Full" is seen
 10. The object is too dark
 11. The object is not clear
 12. The object color is too yellow
 13. I cannot use a CF card
 14. I cannot use the video camera mode
 15. I am using iEasy-CD Creator (version 4.X or below) and I have problem installing the camera driver, what should I do?
- The batteries are exhausted, inverted polarities
The internal memory or CF card is full
It is set to suppress flash mode.
Battery power is low.
The subject is too far away.
Your fingers covered the flash.
The lens is dirty
It is protected. Unprotect it.
The Mode Dial is set incorrectly
The camera has auto-powered off
No CF card is inserted, or the card is full
Change the position to avoid backlit problem. Use eV compensation. Try 1eV or 1.5eV.
Environment too dark. Use flash or tripod.
Change the White Balance to other settings.
Power off and on the unit.
Check if the CF card is fully inserted.
Make sure you have selected 'silent video' mode
- Vivicam 3555 Digital Camera's installation CD includes an "auto-check" program to detect if your PC has any software conflicts between PC devices and the camera. If the "auto-checker" detects existence of software conflicts. It will recommend and guide the user to download an updated driver/file from an appropriate website to resolve the conflict.
 - If you cannot download the driver from website for some reasons, try following the following procedures:
1. Insert the Vivicam 3555 Digital Camera installation CD into the CD-ROM drive
 2. Look for the file "recover.bat" on the CD
 3. Double-click the file to initiate a recovery
 4. Restart your computer
 5. Install the camera driver again

Product Specifications

Image Resolution	Full: 1280 x 1024 (SXGA) Half: 640 x 480 (VGA)
Image Quality	*** Fine, ** Normal, * Economy
Movie Resolution	320x240, max.about 15 sec per movie clip
Lens	F/2.8
Internal Memory	400 KB
LCD Monitor	240 x 160 dots, Color display.
Compact Flash card slot	For CF Type 1 memory cards
Flash	4 Modes: Auto, Forced, Red-eye reduction, Off.
Battery Power	4 x AA alkaline batteries (6V)
Digital Zoom	2X digital zoom at VGA
File format	JPG (DCF compatible) for images MOV for movies (without sound)
Focusing range	4 Feet to infinity (fixed-focus lens)
Operating conditions	0 ~ 40 degrees Celsius.
Dimensions	70 x 110 x 50.3 mm (HWD)
Net Weight	190g w/o batteries

As we continue to improve our products, specifications are subject to change without prior notification.

Trademark Acknowledgements

Vivicam 3555 is a trademark of Vivitar, USA.

TWAIN driver is developed by Conexant Systems, Inc., USA.

Microsoft, Windows 98SE, Me, 2000, XP are registered trademarks of Microsoft Corporation.

Pentium is a registered trademark of Intel Corporation.

PhotoFantasy, PhotoPrinter and PhotoStudio are licensed by Arcsoft, USA.

All other product names mentioned herein are trademarks or registered trademarks of their respective owners.

Vivitar USA (Corporate Office)

1280 Rancho Conejo Boulevard
Newbury Park, CA 91320 USA
www.vivitar.com
Ph. 805 498-7008
Fax 805 498-5086

Vivitar France

48, rue Léonard de Vinci
BP 177
95691-Goussainville Cedex
France
Ph. 33 1 34 38 78 00
Fax 33 1 34 38 78 24

Vivitar (Asia) Limited

Units 1004-1005, 10th Floor
Conic Investment Building
13 Hok Yuen Street
Hungghom, Kowloon
Hong Kong
Ph. 852 2363 6313
Fax 852 2774 5174

Vivitar (Europe) Ltd.

Suite 6, Cherry Orchard West
Kembrey Park, Swindon
Wiltshire SN2 8UP
Ph. (44) 01793 554250
Fax (44) 01793 554270

Vivitar Canada Ltd.

90 Royal Crest Court
Markham, Ontario
Canada, L3R 9X6
Ph. (905) 513-7733
Fax (905) 513-7740