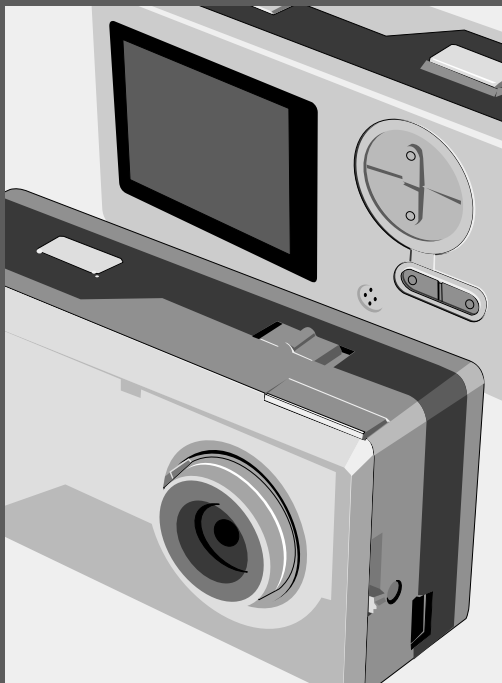


User Manual

ENGLISH



Getting started

The parts	2
Hook up the power	3

Basic operation

How to use mode button	4
How to use control button	

Snapshot

Taking Still Pictures	5
Viewfinder	6
Zoom	
Self-Timer	7
Recording AVI Movies	8

Play

Play the still pictures and AVI Movies	9
Delete the still pictures and AVI Movies	10
View the pictures on PC	11
Install the driver and camera program (Slim 3000)	
View the pictures saved in Camera through Windows	14
Picture's positions and picture files	15
Use PC camera to capture pictures on Windows	

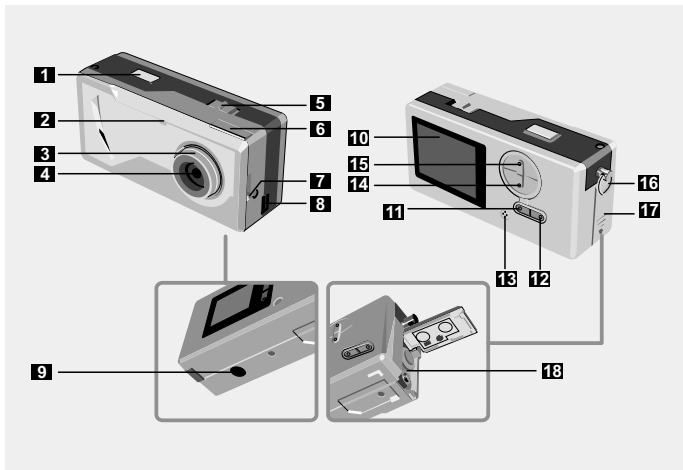
Advanced operation







Change setup	16
Camera program (Slim 3000)	17
Album mode	19
PC camera mode	24

Troubleshooting	27
------------------------	----

The parts

For detailed operation information, please refer to the page number in the bracket.

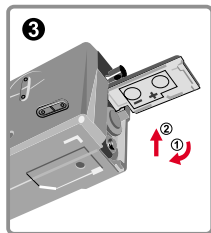
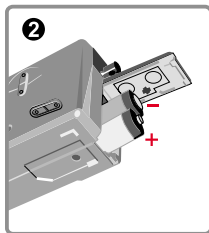
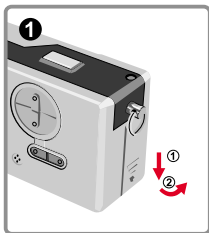


- | | |
|---|--|
| 1 Shutter | 10 LCD display |
| 2 LED Indicator | 11 LCD status and backlight button  (6) |
| 3 Focus (5) | 12 Mode button  (6) |
| 4 Lens | 13 Built-in microphone  |
| 5 Power switch  (5) | 14 Control button (Zoom-in)  (4,6) |
| 6 Viewfinder | 15 Control button (Zoom-out)  |
| 7 Viewfinder (Eject button) | 16 Strap hook/Strap holder |
| 8 USB port (13, 15) | 17 Battery cover (3) |
| 9 Stand hole | 18 Battery compartment (3) |

Hook up the power

Please use two AAA 1.5V batteries

- 1** We recommend you use alkaline batteries



- 1** Open the battery cover

- 2** Insert two AAA batteries
Follow the battery installation as shown.

- 3** Close the battery cover

Battery Life

Taking Still Pictures	Battery Life (minutes)	Number of pictures
Use LCD ON	Approximately 60-70	Approximately 650
Use viewfinder (LCD OFF)	Approximately 100-120	Approximately 950

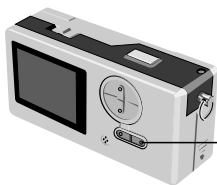
*Above data is for using alkaline batteries and in 25 ° C, pictures are taken every four seconds.

1 Notes:





- Battery life will be shorter in the following conditions.
~ Taking snapshot at low temperature.
~ Turn on/off power repeatedly.
- The above table is for reference only.

How to use MODE button

You can use the MODE button to take and playback pictures or shift between all modes.



Mode Sequence

- 1  Still Picture mode
- 2  Preview mode
- 3  AVI Movie mode
- 4  Self-Timer mode
- 5 **SETUP** SETUP mode

I Press and hold the mode button for two seconds in any mode. Your camera will automatically change to Still Picture mode.

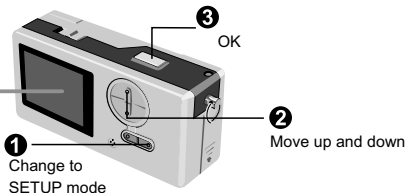
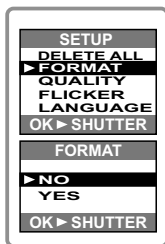
How to use the CONTROL button

- ▶ Still Picture mode  or Self-Timer mode 

You can use the CONTROL button to focus the picture. Press the upper button to zoom in and press the lower button to zoom out.

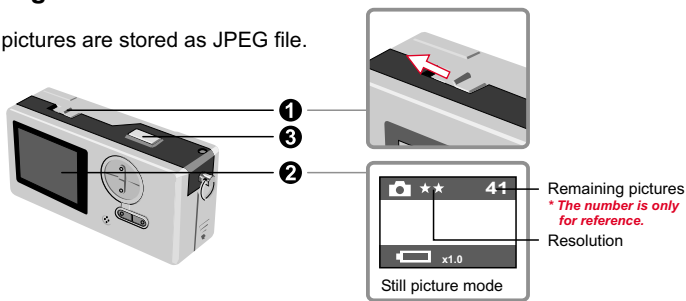
I Please see [Focus] in [Taking Still Picture] for details.

- ▶ SETUP Mode **SETUP**
Use CONTROL buttons



Taking Still Pictures

Still pictures are stored as JPEG file.



- 1** ★★ icon stands for 1600x1200 pixels. For detailed information on setting, please refer to SETUP mode.

1 Before you take still pictures, please power on your camera.

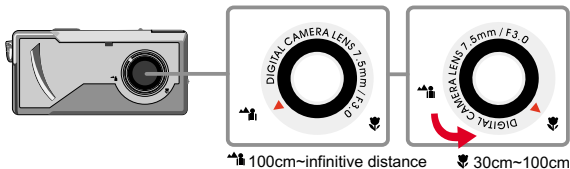
2 Make sure your camera is in Still Picture mode.

3 Press the shutter button.

The sound generated by the shutter tells you that the screen has been closed and opened. You can take the next snapshot.

! Focus for snapshot of near objects (30 - 100cm)

Before you take snapshot of objects less than 100cm to you, please adjust the focus to ; and return to before you take snapshot normally.



! Automatic power shutoff

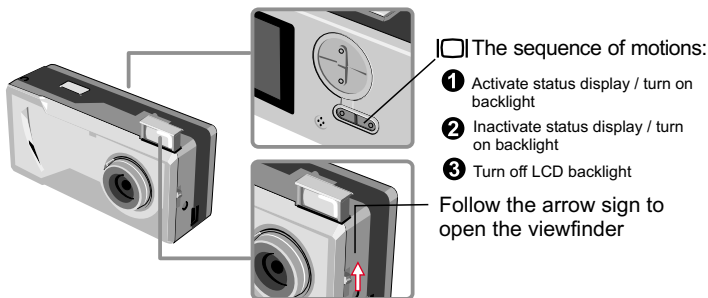
If your camera is motionless for 60 seconds when you take snapshot or play the pictures, the camera will be turned off to save energy.

Please turn on power when you use your camera again.

The automatic power shutoff works only when you use batteries. If you plug connector into USB hole, the automatic power shutoff does not work.



► Viewfinder

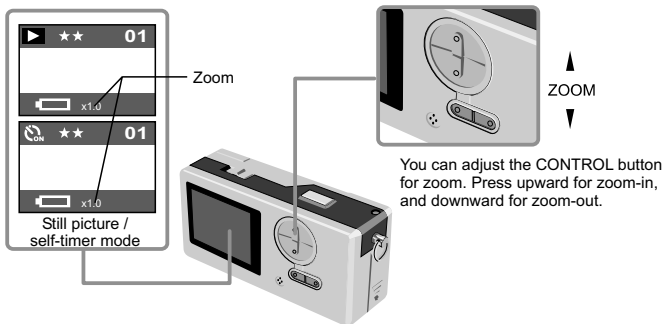
To save the energy of batteries, you can turn off the backlight of LCD and take snapshot through viewfinder.



! Your viewfinder is designed in a special manner. To watch the viewfinder, you should keep your eyes 30 - 45 cm to the viewfinder.

► Zoom

You can use the zoom when you take still pictures  and self-timer  .s



! You can adjust the zoom digitally in 5 sections ranging from 1.0X - 4.0X.

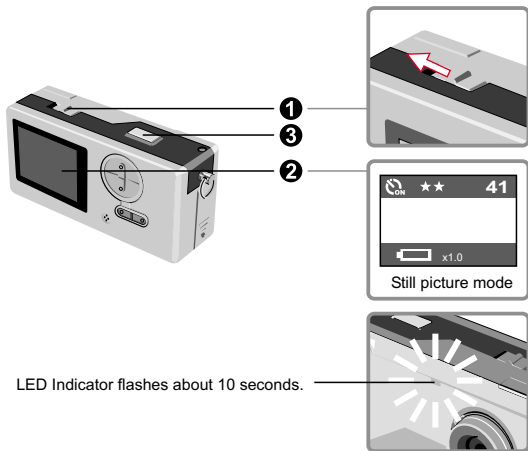
► Self-timer

When you use self-timer, you can take the snapshot of the objects 10 seconds after you press the shutter.

- 1 Turn on power. 
- 2 Press the MODE button  and switch to self-timer mode.
- 3 Press shutter.

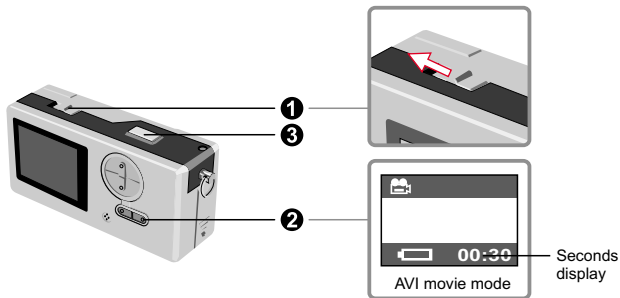
The LED indicator flashes for about 10 seconds. The snapshot is taken as soon as the LED indicator goes out.


Please remember, you cannot cancel the self-timer after the shutter is pressed.




Recording AVI movies

Movies with sound are stored in AVI format.



1 Please follow the arrow sign to turn on power  before recording AVI movie.

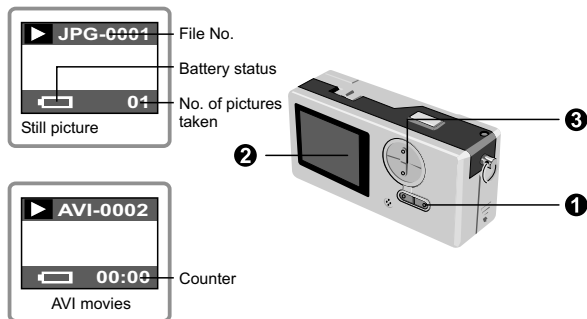
2 Switch to AVI movie mode. 

3 Press shutter to start the recording:
The AVI movies will be taken when the shutter key is pressed and will be saved every 30 seconds. The length of the movie depends on camera memory capacity.

4 Press shutter again to stop the recording:
Press the shutter key again will stop the recording.

! The resolution of AVI movie is 320 X 240.

Play the still pictures and AVI Movies



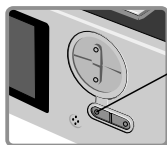
- !** Switch from preview to AVI movies, your camera starts playing if you do not press other button in 1 second.

1 Switch to preview mode.

2 The last taken still picture or AVI movie appears on the screen.

3 Press Up (Down) button to preview the still picture or AVI Movies forwardly (or reversibly).

- !** You can turn off the status display to increase the size of visible area on the LCD.

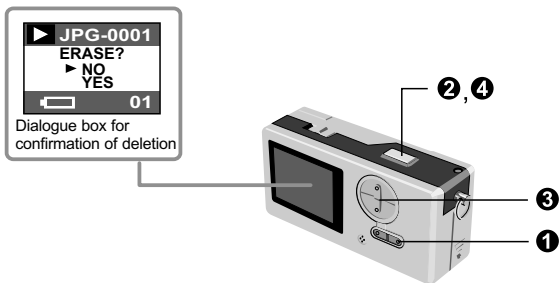



Sequence of motions:

- 1** Activate status display / turn on backlight
- 2** Inactivate status display / turn on backlight
- 3** Turn off LCD backlight

- !** 1. When AVI Movies are downloaded to PC, the sounds of the movie will be played.
2. When AVI Movies are played on the camera, the sound will not be played.

Delete the still pictures and AVI movies



-
- 1** Switch to the preview mode 
The last taken still picture or AVI movie appears on the screen.
Press Up (Down) button to preview the still picture or dynamic picture forwardly (or reversibly).
 - 2** Press shutter, you will see the dialogue box for confirmation of deletion on the screen.
 - 3** Press Down (Up) button to select YES or NO.
 - 4** Press shutter again to confirm and the picture will be deleted.
-

View the pictures on PC

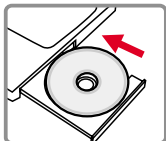
You can view the pictures and films taken by your camera on your PC. You can use the applied software for modification. You can also attach the pictures to e-mails.

- 1** Caution: be sure you have installed the driver before you connect your camera to your PC. If you connect USB cable first, you will not be able to install the driver.

► Install the driver and camera programs for SlimCam 3000.

1 Turn on PC.

2 Place the CD in the CD-ROM.



The title appears on the screen in a few seconds.

If no title appears on screen

- 1** Double-click the icon "My computer".
- 2** Double-click the icon CD-ROM ("Slim 3000 (E:)*")

*The drive of CD varies, depending on how your PC is set up.

3 Move mouse to "Slim 3000 " and single-click left key of mouse.

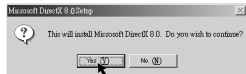


Single-click the left key of mouse at "Slim 3000 ".



Start installing driver and camera program. The "InstallShield Wizard" picture appears.

4 Click the left key of mouse at "NEXT"



Installation begins. Follow the instructions shown on the picture to install DirectX8.0 driver step by step.

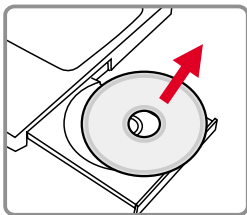
5 Follow the instructions shown on the screen to quit the installation program.



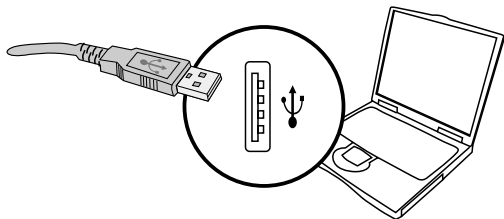
Installation begins. You will see the picture of completion as soon as installation is completed.

The album driver is available for use after your PC is restarted.

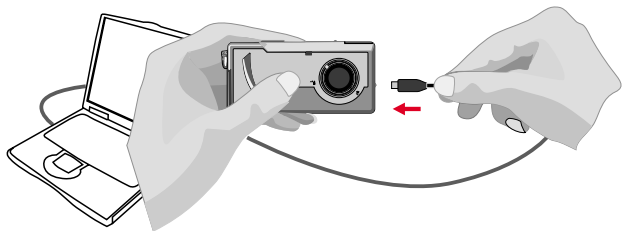
6 CD-ROM pops out from your PC. Take the CD out.



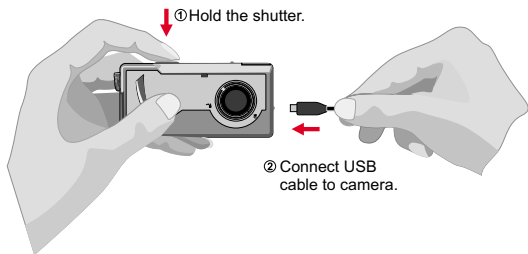
-
- 7** Connect USB cable to the USB receptacle of PC.



-
- 8** Connect the other end of USB cable to camera to complete the installation of "Removable Disk".



-
- 9** Hold the shutter and connect USB cable to camera again to complete the installation of PC camera driver.

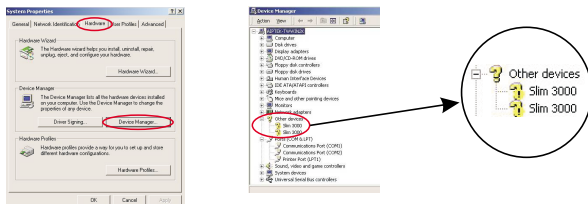


NOTICE:

Please follow the steps to reinstall Slim 3000 if you connect the camera and PC via USB cable without installing Slim 3000 first.

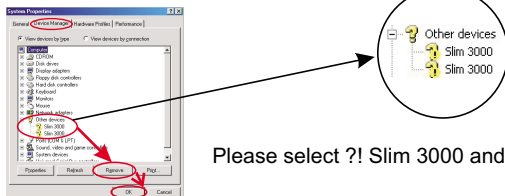
1. Please click Start -> Setting -> Control Panel -> System.
2. Select Hardware tab under System list -> Device Manager.

A. For Windows XP / 2000 User:



Please select the icon ?! Slim 3000 and remove it.

B. For Windows 98SE / ME User:



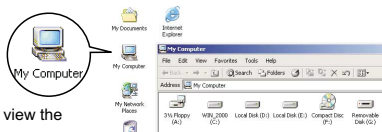
Please select ?! Slim 3000 and remove.

3. Unplug the USB cable from PC.
4. Place the Slim 3000 drive disk into your CD-ROM to install Slim 3000.
5. After the installation is completed, connect the USB cable to PC again and start to use the camera.

► View the pictures saved in Camera through Windows

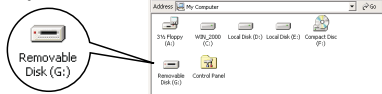
- 1 Turn on PC and activate Windows.
- 2 Connect USB cable to the USB receptacle of PC.
Connect the other end of USB cable to the camera.

- 3 Double-click the icon of "My computer".



- 1 You can also use Cam Manager to view the pictures saved in PC.

- 4 Double-click mouse to identify the new "Removable Disk".



- 5 Double-click "DCIM" file holder.



- 6 Double-click "100MEDIA" file holder.



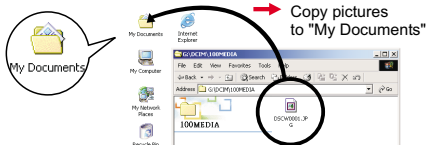
- 7 Double-click picture or AVI.



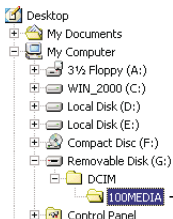
To play AVI dynamic picture, you need to install Windows Media Player (recommended) and DirectX8 driver.

Copy pictures to your PC

Drag the picture to "My Documents"



► Picture's positions and picture files



Including the files of still pictures and dynamic pictures

Static pictures are recorded as DSCWXXXX.jpg.

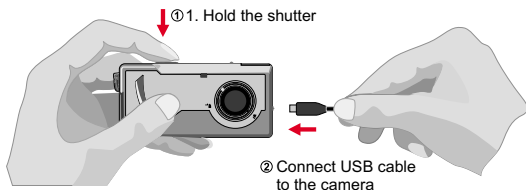
Dynamic pictures are recorded as DSCWXXXX.jpg.

! XXXX is the automatic numbering system; and will be replaced by 0001, 0002, etc. After the memory is formatted.

► Use PC camera to capture pictures on Windows

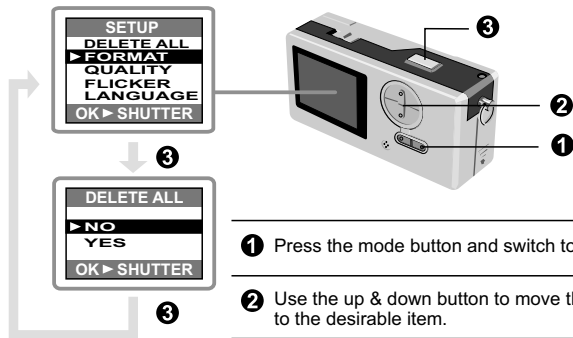
① Turn on PC and activate Windows.

② Connect USB cable to the USB receptacle of PC. Hold the shutter and connect the other end of USB cable to the camera and enter into PC Camera mode.



③ Activate Slim 3000 or other visual software to view Live Video.

Change the setup



- ① Press the mode button and switch to Setup mode.
- ② Use the up & down button to move the mouse to the desirable item.
- ③ Press shutter to confirm your choice.

Item	Setup	Description
DELETE ALL	NO	Delete all still and dynamic pictures from your camera.
	YES	
FORMAT	NO	Format the memory of camera and clear all data from the memory.
	YES	
QUALITY	2048x1536	The camera supports 3 resolutions 2048x1536 is enhanced mode.
	1600x1200	
	1024x768	
FLICKER	50HZ	Set up AC frequency and synchronize with fluorescent.
	60HZ	
LANGUAGE	ENGLISH	Multi-lingual LCD supports English, French, Spanish, German, Dutch, Italian and Portuguese.
	FRANCIAS	
	ESPANOL	
	DEUTSCH	
	NEDERLANDS	
	ITALIANO	
	PORTUGUES	

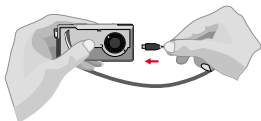
Camera program (Slim 3000)

▶ Activate Slim 3000

When USB is connected to the camera, the Monitor icon shown on Windows row automatically activates the camera program according to the types of modes.

Album Mode

- 1 Connect USB to camera.

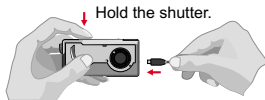


- 2 Slim 3000 appears on the center of the screen and asks you if you want to download the pictures saved in the camera.



PC Camera mode

- 1 Hold the shutter and connect USB to camera.

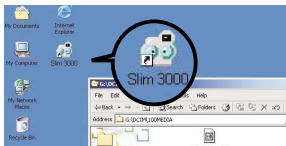


- 2 The Live View program of Slim 3000 appears on the center of the screen.

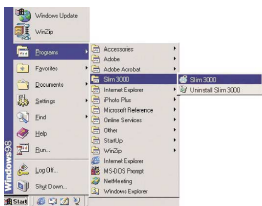


If not activated

- 1 Click the Slim 3000 icon on the Desktop to execute the program where you can begin to use your camera.



- 2 Click on the "Start" menu and go up to "Programs". Then go to the folder named " Slim 3000" and select it.



► Mode Selecting

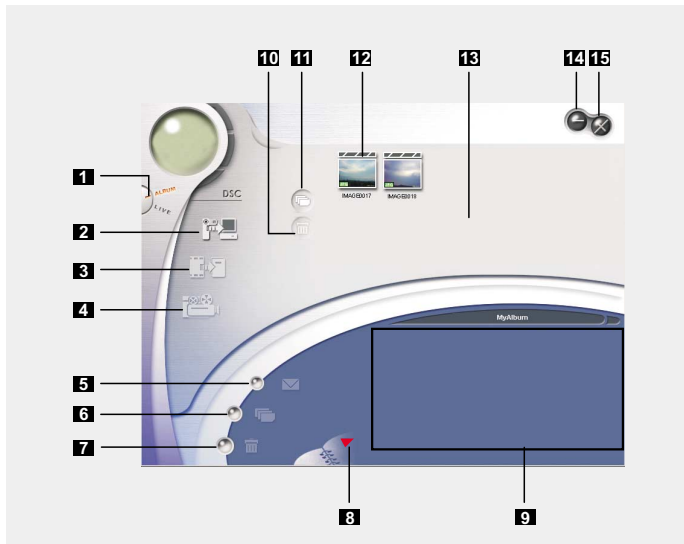
Album Function
(DSC Mode)

Live View
(PC Camera Mode)

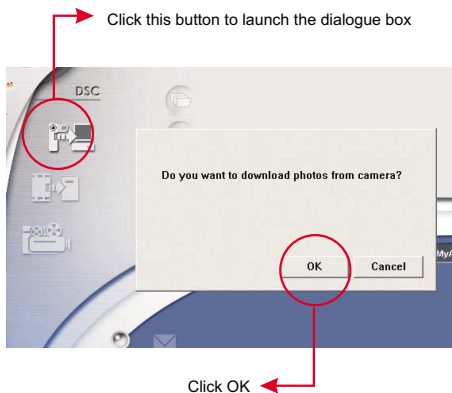


- Press the "Live View" button to change the camera to PC Camera mode.
- Press the "Album Function" button to change the camera to DSC mode.

▶ Album Mode

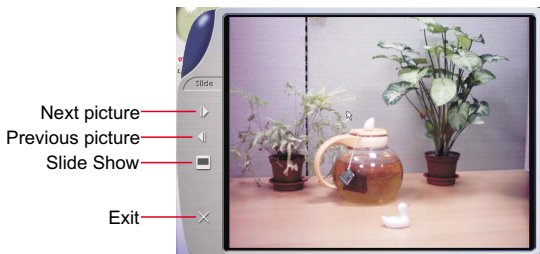


- | | |
|---|----------------------|
| 1 DSC Function (DSC Mode) | 9 Album |
| 2 Transfer images to the work area | 10 Delete |
| 3 Transfer images to the album | 11 Select All |
| 4 Create AVI file | 12 Image |
| 5 Send Mail | 13 Work area |
| 6 Select All | 14 Minimize |
| 7 Delete | 15 Exit |
| 8 Album Manager | |



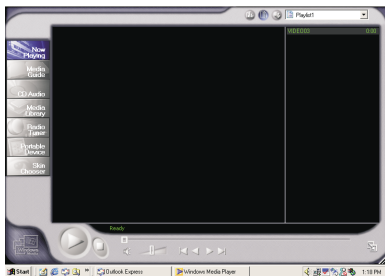
❑ Downloading pictures and movies

1. Make sure your camera is connected to your PC via the USB cable.
2. Set the Slim 3000 to Ablum mode.
3. A dialogue box will pop up and ask if you want to download photos from your camera.



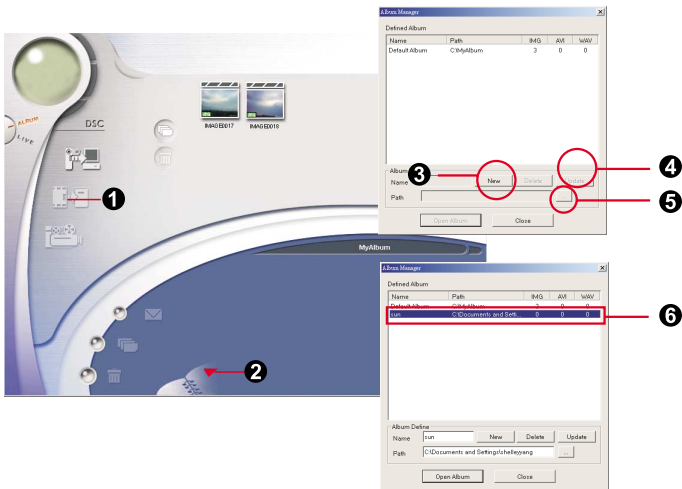
❑ Viewing pictures

Double-click any picture or movie to launch the viewer.




❑ Viewing movies

Double-click any AVI movie to automatically launch the movie in your default media player.



❑ Album Manager

① Highlight a picture on the work area and click  to transfer to the Photo Album.

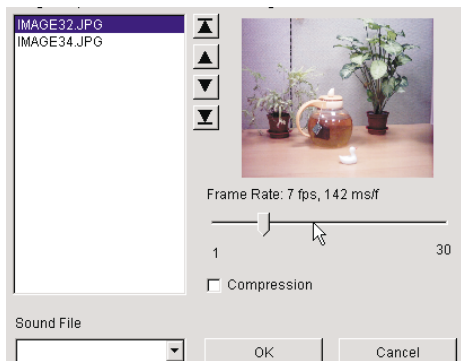
② Click the Album Manager  to create a new Photo Album.

③ Key in a new album name.


④ Click "new" to designate a path where the album will be stored.

⑤ Click "Update" to confirm the new album is created.

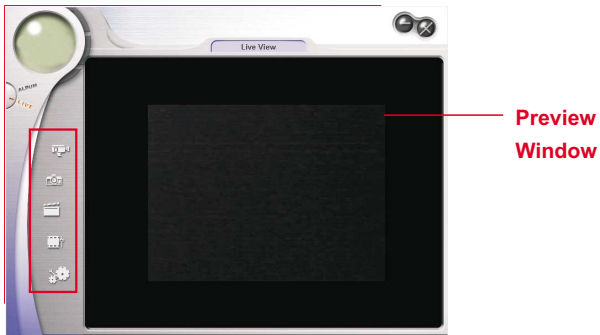
⑥ Click "⑥" to enter the new created album.



❑ Creating AVI files

- 1 Select jpg / bmp images from the work area.
 - 2 Click  to load the images to the AVI File Manager.
 - 3 Order the image sequence, and adjust the frame rate.
-

▶ PC Camera Mode



Record live video

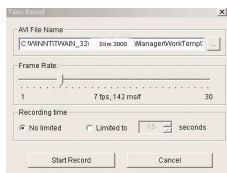
● Steps

1. Press



2. Adjust recording speed and time. →

3. Press " Start to Record "



Capture live still image



Set image size

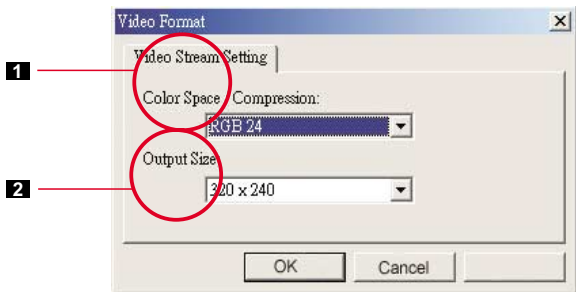


Advanced settings (default settings recommended)



Select video source

(if you have more than one image import device installed)



Set Image Size



1 Color Space

Select one of the following functions when you have different needs.

- RGB 24: better image quality
- I420: faster speed

2 Output Size

Setting output size can change the size of the preview window. The default size is 320x240. Choose larger pixels when you need a larger preview window.

320 x 240
640 x 480

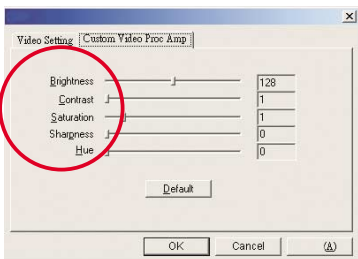
☐ Advanced settings



● Video Setting

- Banding Filter:

When your PC screen flickers, please change the banding filter in Video Setting. The refresh rate (the number of times the screen is redrawn per second) is the most likely cause of flicker. Select 50Hz or 60Hz until your PC screen stops flickering.



● Custom Video Pro Amp

You can use the default setting or change settings (brightness, contrast, saturation, sharpness, and hue) on your own.

Symptom	Actions
1. When installation step missed:	Please remove the camera driver and other related software and follow each installation step to reinstall the camera.
2. When conflict with another camera driver capture device:	If you have any other camera installed on your computer, completely remove the camera and its driver from your system to avoid a driver conflict with another camera or capture device.
3. When unable to install driver:	When installing camera driver under Windows 98SE, you'll be asked to insert a 98SE CD-ROM. Please follow the command to complete the installation. Please re-plug the camera to download images.
4. When unable to download images:	Please follow the operation steps:
5. Adjust VGA card when image color is not fully saturated:	Go to control panel Double - click " Display " Click on " Settings " Click on " Colors " Choose " High Color " or " True Color ". Please follow the operation steps:
6. Please adjust the acceleration function of VGA card when unable to play images in Video Conferencing mode or in AVI mode.	Go to control panel Double - click " Display " Click on " Settings " Click on " Advanced " Click on " Performance " or " Troubleshooting " Set the " Hardware acceleration " from " Full " to " None ".
7. Noise appears on PC screen while camera used as a video conferencing camera.	Change Band Filter to 50 Hz or 60 Hz.
8. Images are blurred.	Adjust focus.
9. Images are too dark.	Take pictures while there is adequate light.
10. AVI files can't be played back	Use editing tools such as Photoshop or PhotoImpact to adjust image brightness. Install Direct X 8.0 or above.