

Basic Manual



W52SA

by SANYO

CDMA 1X
WIN

au by KDDI

Contents/
Before Use

Phone Call

Inputting Text

Address Book/
Pair Function

Mail

Camera

EZweb

EZ Navi

EZ Television (1Seg)

Remote Ctrl Lock

Other Features/
Troubleshooting

Index

Preface

Thank you for choosing W52SA.

Before using your W52SA, be sure to read the W52SA "Basic Manual (this PDF manual)" to ensure proper use of your W52SA. After you have finished reading, keep this PDF manual and the printed manuals (Japanese) in a safe place for your reference whenever you need.

Contact the au shop or the au Customer Service Center for replacements if you lose either of these manuals.

Printed Manuals for W52SA (Japanese)

The W52SA comes with Basic Manual and a Manual.

● W52SA Basic Manual



Equivalent to this English PDF manual.

● W52SA Manual



English version is not available.

The following manuals are available on the au website:


- Download site for "Basic Manual" (Japanese and English) and "Manual" (Japanese only) (<http://www.au.kddi.com/torisetsu/index.html>)
- The au online manual (Japanese) for searching by keyword (<http://www.au.kddi.com/manual/index.html>)

The au online manual (Japanese) is also available from EZweb:

<How to access>

"EZ Top Menu" → "auお客さまサポート (au Customer Support)" → "調べる (Information)" → オンラインマニュアル(Online Manual)".

Check the website of SANYO Electric Co., Ltd. below, for the troubles on your W52SA.

- From W52SA → Press  for more than one second. (SANYO Keitai Planet, in Japanese only)
- From PC → <http://www.sanyo-keitai.com> (SANYO Keitai Arena, in Japanese only)

Information

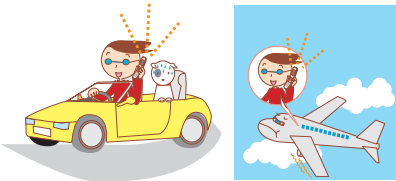
- Fonts or indications may be different from those on the actual screen, or may be partly omitted for better readability of PDF manual. Note that this PDF manual may not reproduce actual screen color tones exactly.
- Screen color tones shown in this manual are those obtained with the default setting.

Manners for Using Cellphones

- A cellphone always generates weak electric waves while its power is ON.
- Be considerate of others around you to use your cellphone enjoyably and safely.

● In some places, the use of cellphones is prohibited.

- Using cellphones while driving is dangerous and also forbidden by the law.
- Be sure to turn your cellphone OFF before you board airplanes. The use of cellphones onboard airplanes is forbidden by the law.



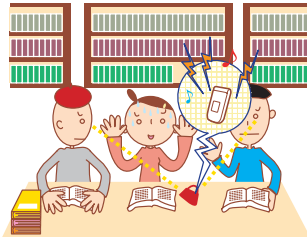
● Electric waves from cellphones may adversely influence medical devices and equipment.

- There may be someone with a pacemaker around you in crowded places such as trains. Turn your cellphone OFF in such places.
- Follow the instructions of hospitals and other medical institutions where it is forbidden to use or carry cellphones.



● Consider where to use your cellphone and be careful of the volume of your voice.

- Do not make calls in cinemas, theaters, museums, libraries and other similar places. Turn your cellphone OFF or set it to the manner mode to prevent others around you from being inconvenienced by ring tones for incoming calls or mails.



- When on a crowded street, use your cellphone in places where you do not prevent others from passing.
- When on a train or in a hotel lobby, move to an area where you will not bother others around you.
- Take care not to talk too loudly during conversations.



- When you shoot photos or movies of others with your cellphone, get permission from them.

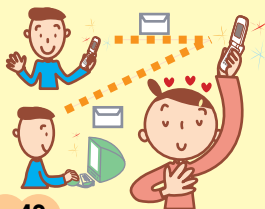


Basic of Cellphone

What You Can Do with W52SA

Mail

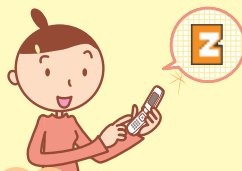
You can send mails to other cellphones or personal computers.



→ Page 42

EZweb

You can download Chaku-Uta[®], Chaku-Uta-Full[®], and wallpapers, etc.



→ Page 59

EZ Navi

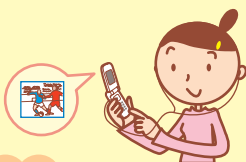
You can search various location information with the functions of "EZ Navi Walk", "Passenger Seat Navi", "Security Navi" or "Evacuate Navi".



→ Page 64

EZ Television (1Seg)

You can watch the Digital Terrestrial Broadcasting for Mobile Television Service (1Seg).



→ Page 66

Camera

You can shoot photos or movies and easily send them by E-mail.

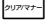


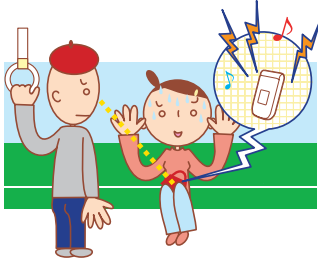
→ Page 54

Manner Mode and Answer Phone

■ Manner Mode

With Manner Mode, you can set the ringer not to sound so as not to bother the people around you.


Press  for more than one second while the standby screen is displayed.



→ Page 29

■ Answer Phone

The caller can leave a message when you cannot answer the phone.

Press  for more than one second while the standby screen is displayed.

"I can't answer the phone right now."
(Japanese)



→ Page 25

Check the Power, Reception and Battery!

■ Keep the "power" ON for normal use.

Keep the power ON to make or answer calls.

Press  for more than one second.



→ Page 14

■ You cannot talk on the phone if the "radio wave" is too weak.


It is sometimes difficult to receive the radio wave in some places even within a service area.

"" indicates the reception condition.

→ Page 14

■ Be careful of the remaining "battery" power.

If the remaining battery power is too low, you may not be able to use the cellphone properly.

"" indicates the remaining battery power. → Page 14

Do not Use Your W52SA While Driving

- Holding a cellphone in your hand to make phone calls and/or watching the screen to view E-mails etc., while driving shall be subject to penalties. (The implementation of the revised Road Traffic Law on November 1, 2004)



✗ Viewing E-mails and watching the screen



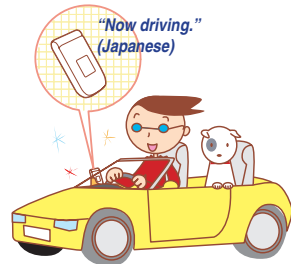
✗ Calling with a cellphone in your hand

Turn the Power OFF or Set Drive Mode While Driving

■ Drive Mode

By setting Drive mode, you will enable the caller to hear a response message such as "Now driving. I cannot answer the phone right now...(Japanese)", and to store a message in Answer Phone.

Press  while the standby screen is displayed, and select "Drive" → "Continuous Mode".



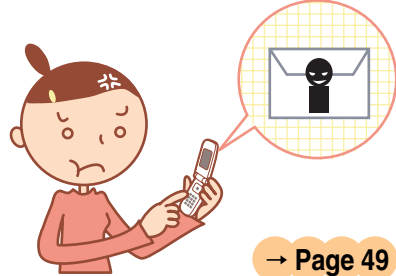
Beware of Junk Mails and One-ring Calls!

■ If you receive junk mails...

Using the mail filter function, you can reject mails sent from specific addresses or mails that bear "未承諾広告※(Unsolicited Ad)" in the title, which is the biggest source of junk mails.

The following mail functions are available for preventing arrival of junk mails.

- "未承諾広告フィルター": Rejects "未承諾広告 (Unsolicited Ad)" mails.
- "アドレスフィルター": Rejects mails sent from specified addresses.
- "指定受信設定": Accepts only mails sent from specified addresses.
- "指定拒否設定": Rejects mails sent from specified addresses.

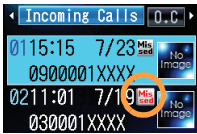


→ Page 49

■ If you receive calls from unknown numbers...

It may be "One-ring Calls" intended to trick you into calling back and accessing unwanted pay programs.

If One-ring Calls are received, **Mis sed** appears in Incoming Calls.




→ Page 24


Making Side Key Operation Invalid

■ Making Side Key Operation Invalid

Prevent side key from misoperation when carrying your W52SA closed in the bag.

Press  for more than one second while the standby screen is displayed.

To release from the locked status

Open your W52SA and press  for more than one second while the standby screen is displayed.

Disaster Message Board Service

When a big scale disaster occurs, you can register your safety information through EZweb. The registered safety information can be referred from anywhere in Japan through EZweb or Internet.

Registering Safety Information

- ◆ When a big scale disaster occurs, you can register your safety information such as your condition or comments, from au cellphone, to "災害用伝言板 (Disaster Message Board)" created on EZweb.
- ◆ After the registration of your safety information, you can notify by E-mail your family or acquaintances you have previously designated that you registered your safety information on "災害用伝言板 (Disaster Message Board)".

Referring to Safety Information

- ◆ You can check the safety information of the person you desire to know about, by entering his/her phone number from EZweb or Internet*.
* The safety information can be accessed at <http://dengon.ezweb.ne.jp/> from cellphones of other carriers, PHS or personal computer.

災害用伝言板
伝言板トップ

～サービス提供中～
安否情報の登録・確認が
できます。

**登録(ご利用可能地域の
方のみ登録可能です)**

確認

削除

[お知らせメール設定](#)

[サービス概要](#)

[ご利用地域情報](#)

[お問合せ](#)


[災害対策への取り組み](#)

[English](#)

How to Access

 → "Top Menu" → "災害用伝言板 (Disaster Message Board)"

<http://dengon.ezweb.ne.jp/>

- * The maximum preservation period of the registered information is 72 hours.
- * The maximum number available for each registration is 10. When the number of registration exceeds 10, the information will be overwritten from the oldest one.
- * The demonstration of this service can be referred to anytime by pressing  → "Top Menu" → "auお客さまサポート (au Customer Support)" → "災害用伝言板(デモ版)" (The demonstration of Disaster Message Board).
- * Select "English" to use the English mode.



Contents

Manners for Using Cellphones	1
------------------------------------	---

Basic of Cellphone

What You Can Do with W52SA	2
Manner Mode and Answer Phone	3
Check the Power, Reception and Battery!	3
Do not Use Your W52SA While Driving	4
Beware of Junk Mails and One-ring Calls!	5
Making Side Key Operation Invalid	6
Disaster Message Board Service	7

Contents

8

Before Use

Confirming the Package Contents	10
Name of Parts	11
Charging the Battery Pack	12
Setting to Front Style or Recording Oneself Style	13
Turning the Power ON/OFF	14
Switching Screen Display to English	14
Basic Usage	15
Icons	17
Initializing E-mail and EZweb Settings	18
Confirming Your Phone Number and E-mail Address	19
Changing Your E-mail Address	20

Phone Call

Making a Call	22
Making an International Call	22
Answering a Call	23
Calling Back (Outgoing Calls/Incoming Calls)	24
Countermeasure for One-ring Calls	24
Adjusting the Other Party's Voice Volume	25
Setting Answer Phone	25
Playing Back Messages on Answer Phone	26
Changing Ringer Type and Volume	27
Setting Manner Mode	29

Inputting Text

Switching Input Mode	30
Entering Single-byte Alphanumeric Characters	30
Entering E-mail Address	32
Entering Pictograph	34

Address Book

Registering Data in Address Book	35
Making a Call from Address Book	37
Editing Address Book Data	38
Registering Data from Outgoing/Incoming Calls	39

Pair Function

Registering Data as Popular Contact	40
Making a Call to the Popular Contact	41

Mail

E-mail	42
Creating and Sending E-mail	43
Reading Received E-mail	46
Replying to Received E-mail	48
Blocking Junk Mails	49
C-mail	50
Creating and Sending C-mail	51
Reading Received C-mail	53

Camera	What You Can Do with Camera 54
	Shooting Photo 56
	Viewing Photos 57
	Attaching Photo to E-mail Message 58
EZweb	EZweb 59
	Displaying EZ Top Menu 60
	Bookmarking Frequently-Accessed Site 61
	Accessing Bookmarked Site 62
	Viewing Charge 62
	Downloading Chaku-Uta®/Chaku-Uta-Full® 63
EZ Navi	What You Can Do with EZ Navi 64
EZ Television (1Seg)	What You Can Do with EZ Television (1Seg) 66
	Watching EZ Television (1Seg) 68
	Ending EZ Television (1Seg) 69
Remote Ctrl Lock	In Case You Lose Your W52SA 70
Other Features	72
Troubleshooting	73
Index	74

Before Use

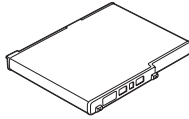
Confirming the Package Contents

The W52SA phone and accessories are included in the package.

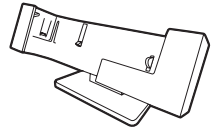
W52SA Phone



Battery Pack



Desktop Holder



Stereo Earphones
(Sample)

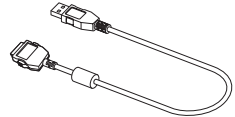


MDR-
E0931
by Sony

SANYO Round-type
Earphone Jack Conversion
Adapter 01



USB Cable
(Sample)



CD-ROM (Japanese)



Basic Manual (Japanese)



Manual (Japanese)

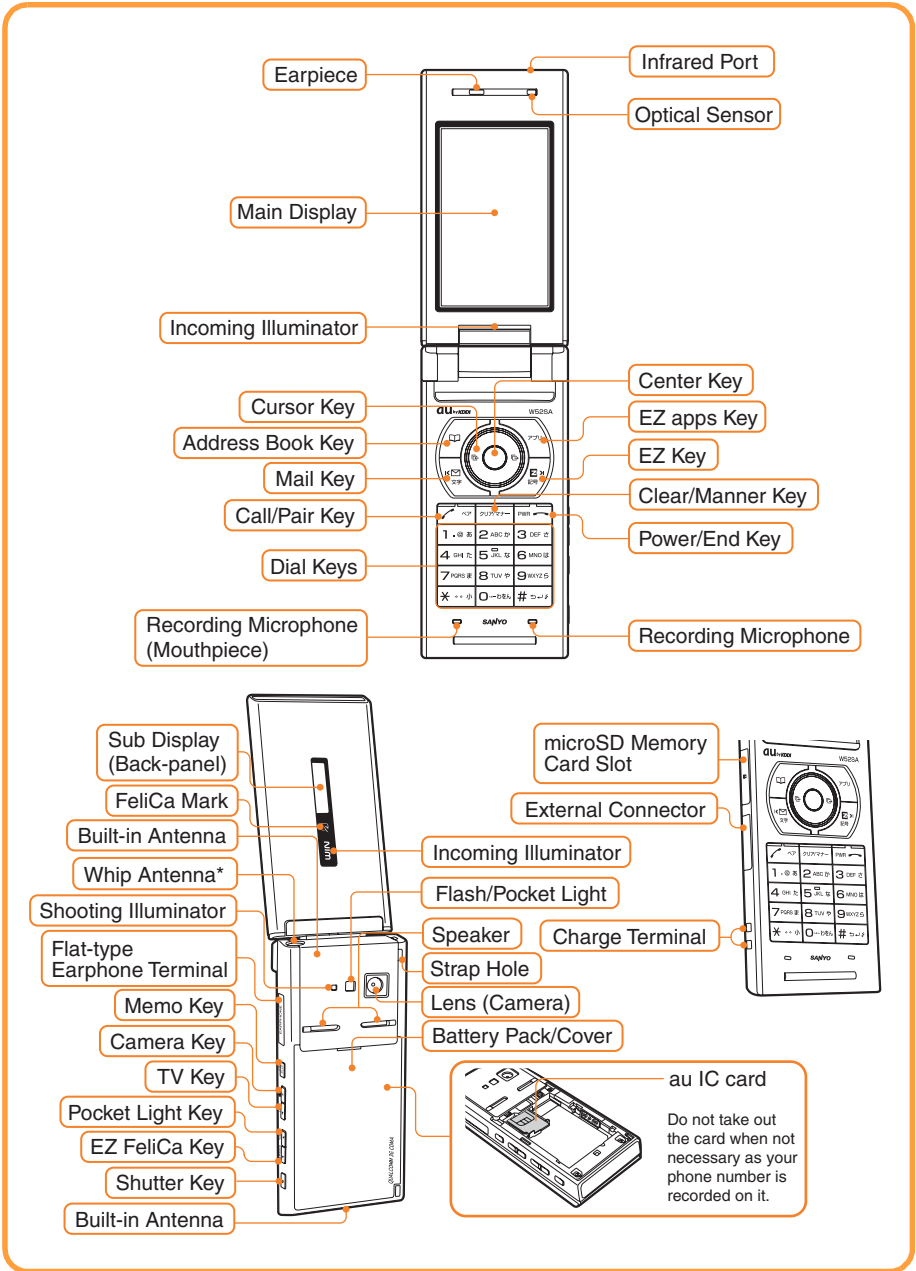


- Warranty (Japanese)
- Precautions in Use (Japanese)
- Global Expert User Guide (Japanese)
- LISMO Installation Guide (Japanese)
- Osafu-Keitai[®] Basic Manual (Japanese)

Information

- An AC adapter is not included in the package. Please purchase the common AC adapter 01 separately.
- microSD[™] Memory Card (Commercially Available) is not included in the package.

Name of Parts



* Extend the whip antenna when you use EZ Television (1Seg) or EZ · FM. It does not improve the quality of voice calls or EZweb communication.

Charging the Battery Pack

The battery pack is not fully charged at the time of purchase. Charge the battery pack before using your W52SA for the first time.

How to Charge the Battery Pack

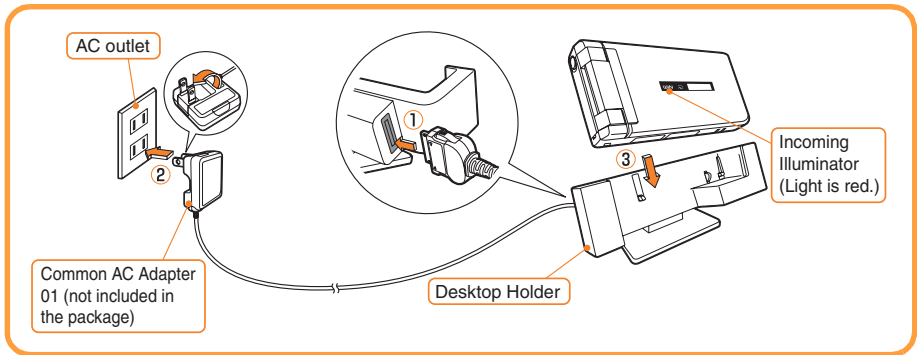
1 Connect the Common AC Adapter 01 to Desktop holder.

- Check the pin configuration and orientation of the connector and connect it horizontally.

2 Plug the power plug of the Common AC Adapter 01 into an AC outlet.

3 Place the W52SA with the battery pack attached on Desktop holder, as illustrated below.

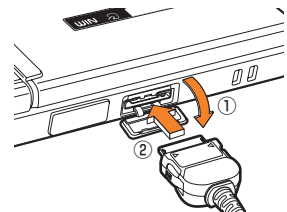
- Hold Desktop holder to detach the W52SA.



- The cellphone beeps and the incoming illuminator lights red. → Charging is in progress.
- The cellphone beeps and the incoming illuminator turns off. → Charging is completed.

Information

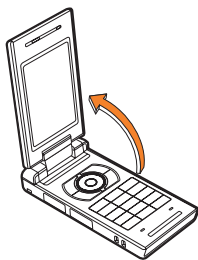
- The battery pack can also be charged by directly inserting the Common AC Adapter 01 connector (not included in the package) into the external connector on the W52SA.
- Note that the actual figures may differ from the illustrations depending on your AC adapter.



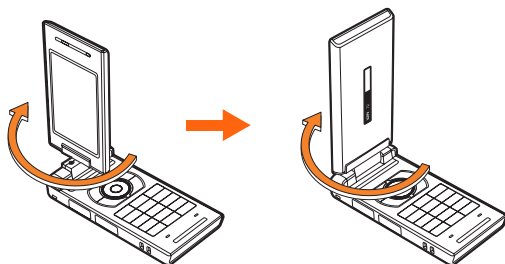
Setting to Front Style or Recording Oneself Style

W52SA allows you to use in Front Style or Recording Oneself Style other than usual open style.

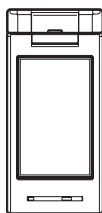
- 1** Open to the partially-opened position (about 120 degrees).



- 2** Rotate the display 180 degrees clockwise.

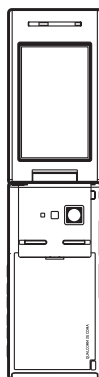


● Do not make any operations while rotating.



● **Front Style**
Turning out the display and hold as closed:

You can shoot the picture in the same style as a digital camera.



● **Recording Oneself Style**
Turning out the display and hold as opened:

This style is convenient to shoot the picture of yourself.

Information






- Descriptions of this manual indicate the W52SA operation in the opened style.
- Rotate the display to the direction along the arrow mark on the figure. Do not force to rotate so that it may cause the malfunction.

Turning the Power ON/OFF

- 1 Press  for more than one second.



Check the battery level.

				
High	Medium	Low	Zero	Charging

Check the radio wave reception.

				
Strong	Medium	Weak	Very weak	Out of service area



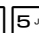
<Standby Screen>



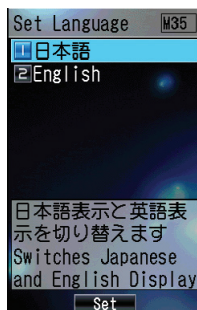
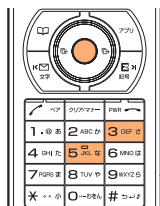
- ▶ When "Out" appears, you cannot make or receive calls.
- ▶ When "Y" appears, you may not be able to make or receive calls.


Switching Screen Display to English

Menus, messages and other screen display language can be switched between Japanese and English.

- 1 Press    while the standby screen is displayed.

- ▶ The Set Language screen appears.



- 2 Use  to select "English" and press  (Set).

- ▶ The screen display is set to English.



Basic Usage

How to Use the Keys

Center Key

Viewing Main Menu/
Defining the item
Pressing for more than
one second: Setting the
side key operation valid/
invalid.

Address Book Key

Viewing Address Book
Pressing for more than
one second: Registering a
new entry to the address
book

Mail Key

Accessing E-Mail Menu
Pressing for more than
one second: Accessing
C-Mail Menu

Call/Pair Key

Making/answering a call
Accessing Popular Menu

Clear/Manner Key

Canceling the operation (to
display the previous
screen), erasing characters,
and accessing the setting
screen of Manner Mode
Pressing for more than one
second: Setting/releasing
Manner Mode

Dial Keys

Entering phone numbers
or characters

Cursor Key

Moving the cursor
 ⏪: Selecting the EZ News Flash Ticker Display or
increasing the volume
 ⏩: Viewing Incoming Calls
 ⏴: Displaying the notification screen, calling up
paused functions or decreasing the volume
 ⏵: Viewing Outgoing Calls
 In this PDF manual, the operations of the cursor keys
are shown as follows;
 Press the up or down key → ⏪/⏩
 Press the left or right key → ⏴/⏵
 Press the center key → ●

EZ apps Key

Accessing EZ apps (BREW®)

EZ Key

Accessing EZ Service menu

Power/End Key

Ending calls or operations
Pressing for more than one second:
Turning the power ON/OFF

Memo Key

Accessing Voice/Memo menu
Pressing for more than one
second: Turning Answer
Phone ON/OFF

Camera Key

Selecting the EZ News Flash ticker
Pressing for more than one
second: Activating camera
(for shooting photos)

TV Key

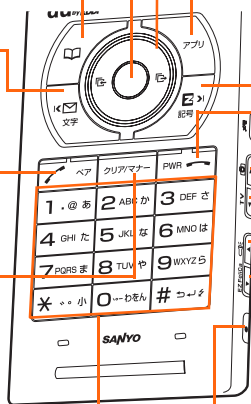
Displaying the notification screen,
and calling up paused functions
Pressing for more than one
second: Starting the au
Media Tuner

Shutter Key

Viewing Main Menu/Defining the item
Pressing for more than one second:
Setting the side key operation valid/
invalid.

EZ FeliCa Key

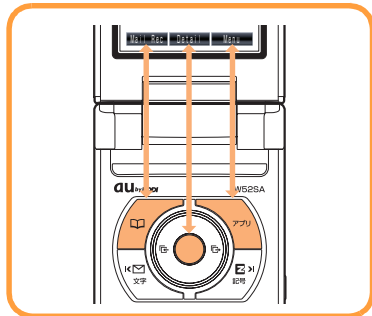
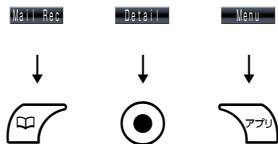
Pressing for more than one second:
Temporarily releasing the FeliCa
Lock (when Quick Release is ON)



■ Items in the Underpart of the Display and the Operation

Use the assigned key to operate the item indicated in the underpart of the display. The displayed items may differ depending on the screen.

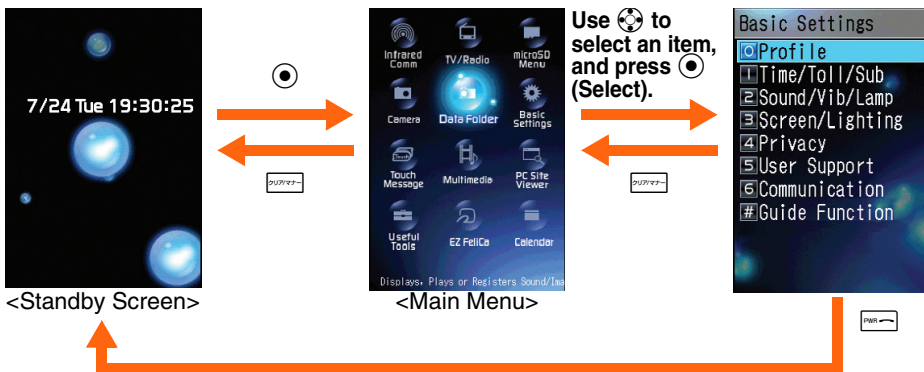
For the case illustrated on the right, press the following keys.



■ Using the Main Menu

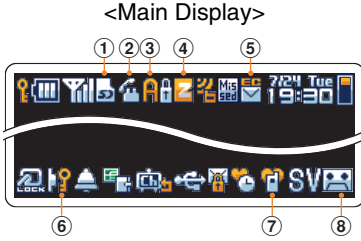
Press Center Key (●) while the standby screen is displayed, and the main menu appears.

Use Cursor Key (⊙) to select an item from the main menu, and press ● to access the selected function.




Press to return to the previous screen if you got confused or made a wrong operation. Press to return to the standby screen. Depending upon the function currently in use, it may be possible to pause that function (and switch to BGM Play) by pressing .


Icons



<Sub Display>



* The display will switch between standby screen 1, standby screen 2, and full clock display each time  is pressed.

No.	Description	No.	Description
①	microSD™ Memory Card inserted	⑤	Unread mail exists
②	During a call*/Running EZ Television (1Seg) ()	⑥	Side key operation invalid
③	Running EZ apps (BREW®)	⑦	Manner Mode ON
④	Using EZweb	⑧	Answer Phone ON

* Not shown on the sub display.

Initializing E-mail and EZweb Settings

Application to the EZweb service is required in advance to use the E-mail and EZweb services. Contact au shops or the au Customer Service Center if you did not apply to the service at the time of purchase.

Perform the EZweb initialization before using this service. Initialization automatically provides your E-mail address.

- 1** Press  while the standby screen is displayed.



EZwebを利用するための初期設定を行います
PCサイトビューアの初期設定も行います。
「OK」を押してしばらくお待ちください。

- 2** Press  (OK).



Initializing subscriber account.
Please be patient...

- ▶ Wait for a while until the screen on the right appears.





Welcome to EZweb.
Your e-mail address is:
XXXXXXXXXXXXXXXX@ezweb.n
e.jp


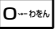
- 3** Press  (OK).



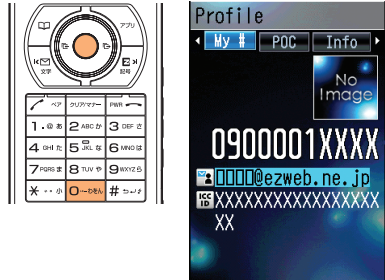
Information

- Initialization can also be performed by pressing  or  while the standby screen is displayed.


Confirming Your Phone Number and E-mail Address

- 1** Press  while the standby screen is displayed, and press .

- ▶ The Profile screen appears, and you can confirm your phone number and E-mail address.



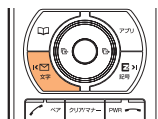
Information



- While the standby screen is displayed, your phone number and E-mail address can also be confirmed by selecting  → "Basic Settings" → "Profile".

Changing Your E-mail Address


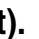
E-mail Address
 Example: △△△@ezweb.ne.jp
 Customizable Part Domain

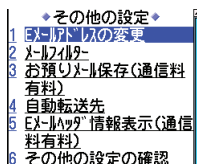
- 1** Press  while the standby screen is displayed.





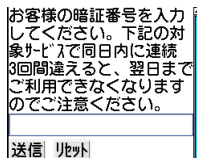
- 2** Use  to select "E-Mail Setup" and press  (Select).



- 3** Use  to select "Other" and press  (Select).



- 4** Use  to select "Eメールアドレスの変更 (Change E-mail Address)" and press  (Select).



5 Enter your Security Code and press

● (OK). Use ● to select "送信 (Send)" and press ● (Select).



Eメールを変更します。
以下のご注意を確認した
上でアドレスを変更を行って
ください。

※入力前の注意※
1. Eメールを変更直後はし
ばらくの間メールが受信でき
ないことがあります。
2. わかりやすいアドレス(名

- ▶ Security Code is a 4-digit number you have filled in the application form at the time of purchase.
- ▶ If you enter a wrong Security Code 3 times in a row within the same day, you will not be allowed to perform setup operations until the following day.

6 After checking the cautions,

use ● to select "承諾する (Agree)" and press ● (Select).

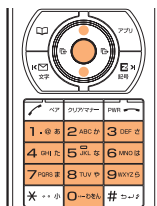


Eメールを変更します。
ご希望のEメールを入力
してください。

@ezweb.ne.jp

送信 リセット

7 Use ● to select the entry area and press ● (Edit). Enter an E-mail address and press ● (OK).



記号は「.」、「-」、「_」が使用可能です。「.」は最初には利用できません。最初に数字の「0」を使用することはできません。

@@@@@

@ezweb.ne.jp

送信 リセット

- ▶ For details about entry of E-mail addresses, see page 32.

8 Use ● to select "送信 (Send)" and press ● (Select).



新しいEメールは

@@@@@@ezweb.ne.jp

です。
よろしいですか？

OK キャンセル

If the E-mail address you try to set is not accepted:

The E-mail address you entered is already being used. Enter a different E-mail address.

9 After confirming the new address, use ● to select "OK" and then press ● (Select).



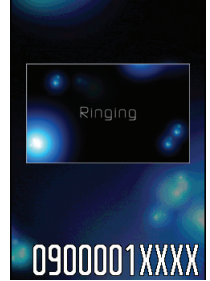
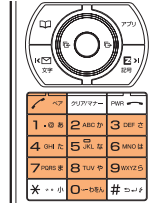
- ▶ After this step, perform operations as prompted by on-screen instructions.

Phone Call

Making a Call

- Use the to keys to enter the receiver's phone number, then press .

▶ To make a call to a regular telephone, enter the phone number starting with the area code.



How to make a call:

Adding "184" before the phone number	Your phone number is not displayed on the receiver's display.
Adding "186" before the phone number	Your phone number is displayed on the receiver's display.
Adding nothing	The call is made in accordance with the Caller ID Notice setting.

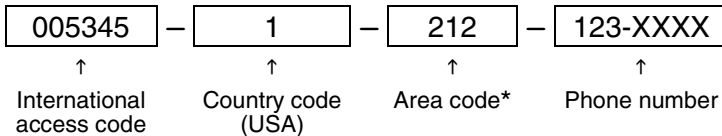
▶ Enter a phone number and press (Select). Use to select "Add Extra No." and press (OK) to add "184" or "186".

Making an International Call

au International Call Service

Available without any additional application.

Example: To call 212-123-XXXX in the USA



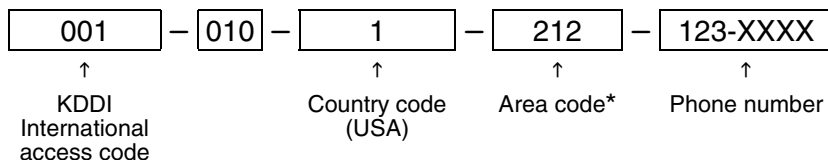
*When an area code begins with "0", dial excluding "0".

- Calling charges for this service are added to monthly au calling charges and billed together.
- Check the Country code at au Customer Service Center.
- For charges, refer to au MOBILE PHONE SERVICE GUIDE or contact au Customer Service Center.

001 KOKUSAI MOBILE TALK

Application required.

For inquiries, contact KDDI Customer Service Center at 0077-7160 (Toll-free; open 9:00 to 20:00 every day including weekends and national holidays).



* When an area code begins with "0", dial excluding "0".

- Calling charges for 001KOKUSAI MOBILE TALK are charged separately from monthly au calling charges.
- Check the Country code at au Customer Service Center.

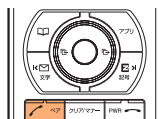
For charges, refer to au MOBILE PHONE SERVICE GUIDE or contact au Customer Service Center.



Answering a Call

1

Press to answer an incoming call.



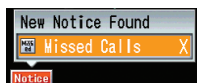
Press to hang up.

Screen displays for incoming phone calls:

Caller's phone number Example: "0900002XXXX"	The caller has set it so as to display his/her phone number. The caller's name is also displayed if the caller's information is registered in your address book.
"ID Unsent"	The caller has set it so as not to display his/her phone number.
"Payphone"	The call is made from a payphone.
"Not Support"	The call is made from the phone that does not support ID notification.

Screen display when the call is not answered:

The message shows that there were incoming calls unanswered (Missed Calls).

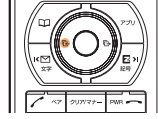



Calling Back (Outgoing Calls/Incoming Calls)

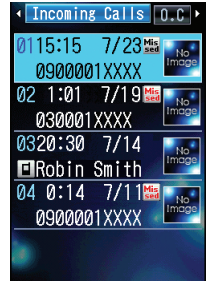
Example: To make a call from Incoming Calls

1



Press  while the standby screen is displayed.

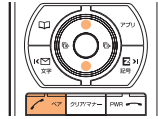


- ▶ Press  to display Outgoing Calls.
- ▶ The list shows the latest dialed/received call on top.



2

Use  to select the phone number, then press .



Information


- The latest 20 phone numbers you dialed (Outgoing Calls) and received (Incoming Calls) are saved in each history.

Countermeasure for One-ring Calls

■ What is One-ring Calls?

One-ring Calls is made to leave the number in Incoming Calls, and receivers who call back will be automatically connected to high-charged programs such as dating service.

■ Icon as Countermeasure for One-ring Calls

On the W52SA, One-ring Calls (the ringer time is 3 seconds or less) are displayed as  in Incoming Calls. Be careful when you call back to an unfamiliar number.

Icons displayed on Incoming Calls




Mis sed : Missed calls of which ring time is 3 seconds or less




Mis sed : Missed calls of which ring time exceeds 3 seconds







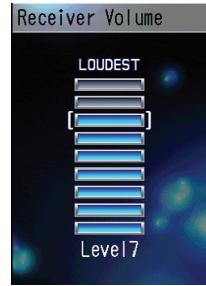
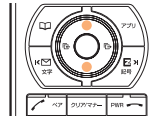
Adjusting the Other Party's Voice Volume

- 1 Use  to adjust volume during a call.


Press  to increase the volume.



Press  to decrease the volume.

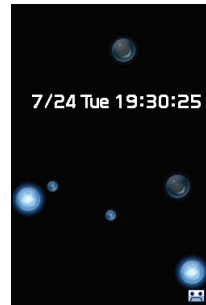
-  The voice volume can be adjusted to any one of 9 levels or "LOUDEST".
-  You can adjust to a louder volume than Level9 even during a call by pressing  (Loudest). That setting will be released once you press  (Release) or end the call.




Setting Answer Phone

- 1 Press  for more than one second while the standby screen is displayed.

-  Answer Phone is turned ON and "" appears on the standby screen.



■ To Turn Answer Phone OFF

Press  for more than one second while the standby screen is displayed.


Information

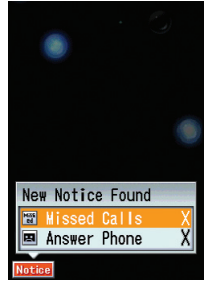
- You can record each message for approximately 20 seconds maximum in Answer Phone, and up to 3 messages can be recorded including Phone Memo.
- Use "Answering Service (Voice Mail)" when you have turned the power off or where the radio wave is blocked.






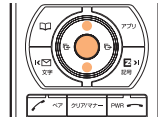
Playing Back Messages on Answer Phone

When a message is recorded on Answer Phone:



- ▶  (Answer Phone) and the number of messages appears.





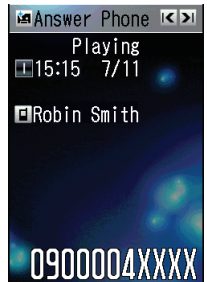
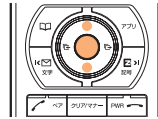
1 Use  to select "" and press  (Check).




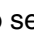

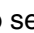

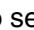
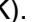
Icons

-  : Unchecked Answer Phone message
-  : Checked Answer Phone message

2 Use  to select the recorded message to play back and press  (Play).



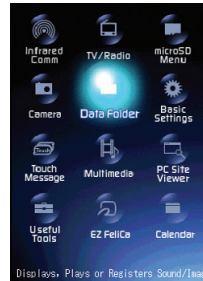
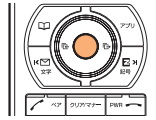
Information

- Messages on Answer Phone can be erased by the following steps.
 - ① While or after playing recorded messages in step 2, press  (Menu).
 - ② Use  to select "Erase" and press  (OK).
(If you operate the function while playing the message, go to step ④.)
 - ③ Use  to select "Erase One" and press  (OK).
 - ④ Use  to select "YES" and press  (OK).

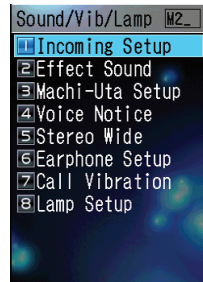
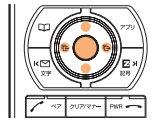
Changing Ringer Type and Volume



1 Press while the standby screen is displayed.

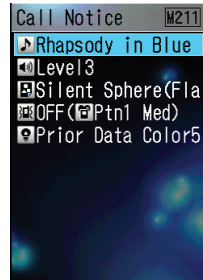
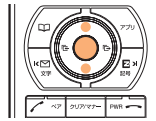


2 Use to select "Basic Settings" and press (Select).



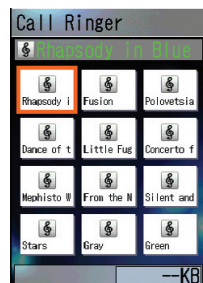
Use to select "Sound/Vib/Lamp" and press (Select).

3 Use to select "Incoming Setup" and press (Select).





Use to select "Call Notice" and press (Select).

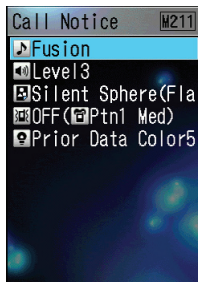
4 Use to select "" and press (Select).






Use to select "Original" and press (Select).



Pressing (Play) plays back the selected ringer.

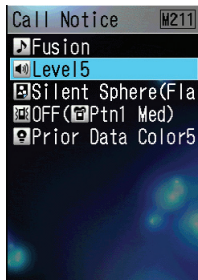
5 Use  to select a melody and press  (Set).



6 Use  to select "  " and press  (Select).



7 Use  to adjust the volume and press  (Set).



Press  to increase the volume.

Press  to decrease the volume.

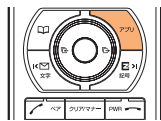
▶ The ringer volume can be adjusted in 5 levels. Set the volume to "OFF" to mute the ringer.

Press  (STEP↑) to gradually increase the volume from Level 1.

Press  (STEP↓) to gradually decrease the volume from Level 5.

8 Press  (Save).

▶ The melody (ringer) is set.



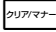
Information

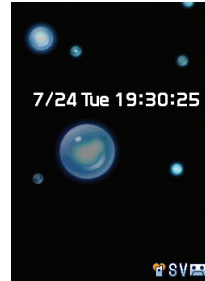
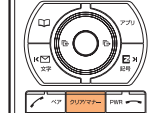
- The default ringer is "Rhapsody in Blue".
- The latest Chaku-Uta® (ringer) can be downloaded and set as the ringer. See page 63.

Setting Manner Mode

The vibrator of the W52SA notifies you of the incoming call.

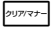
1

Press  for more than one second while the standby screen is displayed.



- ▶ "SV" and "📞" appear on the standby screen. Answer Phone is turned ON at the same time and "😞" appears on the standby screen.

■ To Turn Manner Mode OFF


Press  for more than one second while the standby screen is displayed.



- ▶ "SV" and "📞" disappear when Manner Mode is turned OFF. Answer Phone is turned OFF at the same time, and "😞" also disappears.



Inputting Text

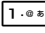
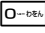
Switching Input Mode

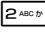
On the character input screen, press  to display the input mode selection screen.

Use  to select an input mode and press  (OK).





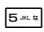




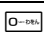




Entering Single-byte Alphanumeric Characters

You can use the key  to  to enter characters. The characters appear as shown in the following table each time the indicated key is pressed.

Example: Each time you press the  key, the characters appear in the order of "a", "b", "c", "2", "a", "b"...


Press the key of the character to enter next, after the desired character is displayed.

Key	Lowercase character input mode								Uppercase character input mode							
	Number of presses								Number of presses							
	1	2	3	4	5	6	7	8	1	2	3	4	5	6	7	8
	.	@	-	_	/	:	~	1	.	@	-	_	/	:	~	1
	a	b	c	2					A	B	C	2				
	d	e	f	3					D	E	F	3				
	g	h	i	4					G	H	I	4				
	j	k	l	5					J	K	L	5				
	m	n	o	6					M	N	O	6				
	p	q	r	s	7				P	Q	R	S	7			
	t	u	v	8					T	U	V	8				
	w	x	y	z	9				W	X	Y	Z	9			
	0								0							
	Switches between uppercase and lowercase characters.															
	Shifts to the previous character assigned to the same key, when the entered character has not yet settled (Back Space function). Inputs a line break if possible after the entered character has been settled.															

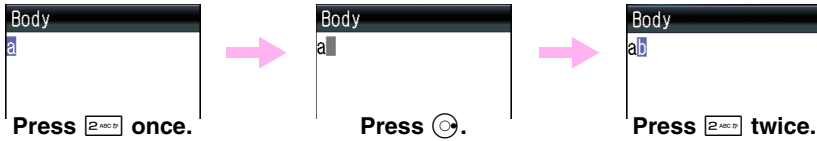
Information

- Up to 30 lowercase characters including " - " (hyphen), " . " (dot) or " _ " (underbar) can be used for your E-mail address.
" . " (dot) or " 0 " (numeric) cannot be used at the beginning of an address.
The characters and symbols in the gray cells () cannot be used before the "@" as in "@ezweb.ne.jp".

■ Consecutively Entering Characters Assigned to the Same Key




After entering the first character, press  and the next key.

Example: Entering "ab"



■ Erasing Characters

Press  to erase a character.

Press  for more than one second to erase all characters after the cursor (). All characters are erased when the cursor () is at the end of the text.

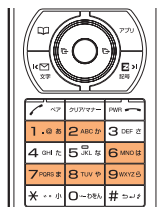
Entering E-mail Address

Example: To enter "taro@sanyo.ne.jp" using Phrase

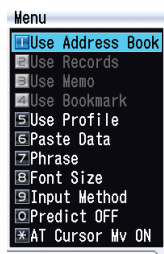
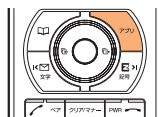
1 Enter "taro@sanyo".

- t : Press once.
a : Press once.
r : Press 3 times.
o : Press 3 times.
@ : Press twice.
s : Press 4 times.
a : Press once.
n : Press twice.
y : Press 3 times.
o : Press 3 times.

▶ Press once to enter ".".

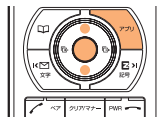


2 Press (Menu).





3 Use to select "Phrase" and press (OK).

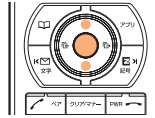
Use (Category) to select "Internet".



▶ Press or / to switch between the phrase lists by category.

4


Use  to select ".ne.jp" and press  (Select).

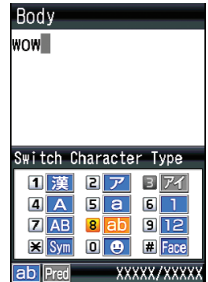
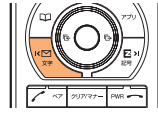




Abc


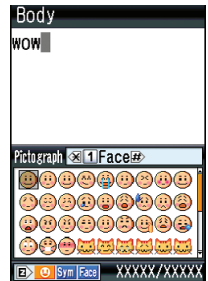
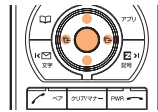
Inputting Text




Entering Pictograph



1 Press  on the character input screen.

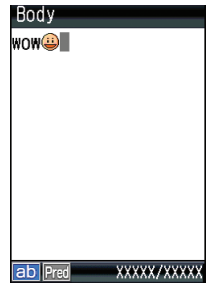
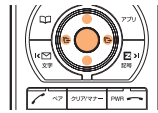




2 Use  to select "

 and press .

▶ Press  (Category) or /# to switch between the pictograph lists by category.

3 Use  to select a pictograph to enter and press  (Select).




▶ You can consecutively enter pictographs by pressing  (Continue) instead of  (Select).



Address Book

Registering Data in Address Book


You can register data up to 1000 in the address book.

- 1 Press  for more than one second while the standby screen is displayed.

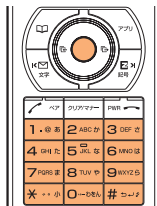




- 2 Use  to select "Name" and press  (Select).

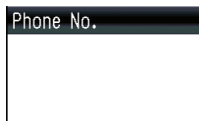


- 3 Enter a name and press  (OK).

- ▶ The reading is automatically entered.



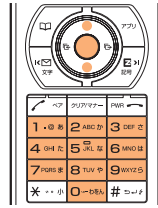
- 4 Use  to select "Phone No.1" and press  (Select).



5

Enter a phone number and press **OK**.

Use **Navigation** to select a type of phone number and press **Select**.

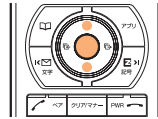


▶ Enter the area code when registering a regular telephone number.

▶ When you do not enter an E-mail address, go to step 8.

6

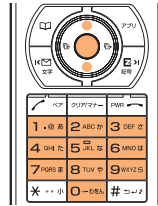
Use **Navigation** to select "E-Mail Address1" and press **Select**.



7

Enter an E-mail address and press **OK**.

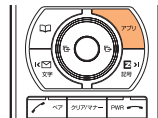
Use **Navigation** to select a type of E-Mail address and press **Select**.



8

Press **Reg.**

▶ The available number for entries remaining appears.



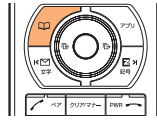
Information


- Entries are automatically registered in the lowest available memory number between 000 and 999.
- In addition, groups, images or other items can be registered.

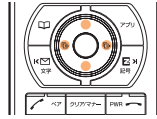



Making a Call from Address Book

- 1 Press  while the standby screen is displayed.

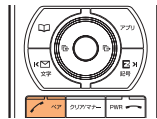


- 2 Use  to select the person to call.



- ▶ Press  (Detail) to display the detail screen where you can confirm registered contents such as phone numbers and E-mail addresses.

- 3 Press .





- ▶ A call is made to the selected phone number.



Editing Address Book Data




Example: To change a phone number

- 1 Press  while the standby screen is displayed, and use  to select the data to edit.






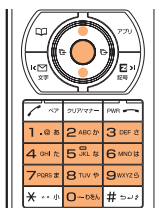
- 2 Press  (Detail) and  (Edit).






- 3 Use  to select "" (Phone No.), and press .



- 4 Edit data and press  (OK). Use  to select a type of phone number and press  (Select).



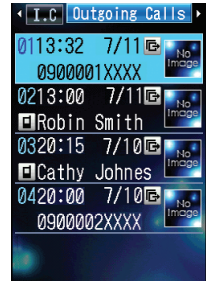
- 5 Press  (Reg). Use  to select "YES" and press  (OK).




Registering Data from Outgoing/Incoming Calls



1

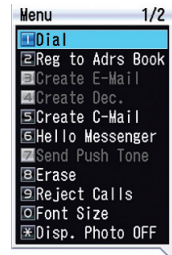
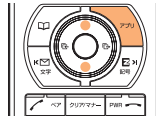
Press  while the standby screen is displayed.



- ▶ The Outgoing Calls screen appears.
- ▶ Press  to display the Incoming Calls screen while the standby screen is displayed.

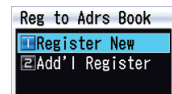
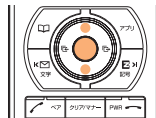
2

Use  to select the phone number to register and press  (Menu).



3



Use  to select "Reg to Adrs Book" and press  (OK).





"Register New": Registers new data in the address book.

"Add'l Register": Adds or edits existing data and then registers the data in the address book.

4

Use  to select "Register New" and press  (OK).

Use  to select a type of phone number and press  (Select).



- ▶ To input the name, refer to procedures after step 2 of "Registering Data in Address Book" (page 35).




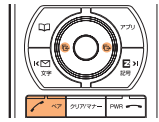
Pair Function



You can register the frequent contacts (up to 5 entries) as Popular Contacts to make calls, send mails or use Hello Messenger easily.

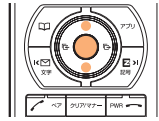
Registering Data as Popular Contact



1 Press  while the standby screen is displayed.

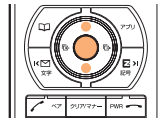
Use  to select a tab of the number to register.





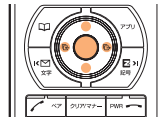
2 Use  to select "Reg./Rel." and press  (Select).

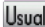


3 Use  to select "YES" and press  (OK).



4 Use  to select the person to register and press  (Select).



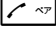

▶ The phone number and the E-mail address registered as  in the address book appear.

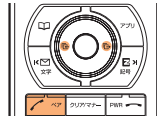
Information



- Select an entry from the address book to register as Popular Contact. Before registration, refer to "Registering Data in Address Book" (Page 35) and register the data of the Popular Contact in the address book.

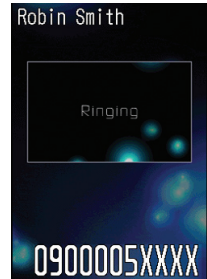
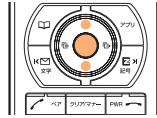


Making a Call to the Popular Contact


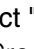
- 1 Press  while the standby screen is displayed.
Use  to select the person to call.



- 2 Use  to select "Dial" and press  (Select).



■ Sending a Mail to the Popular Contact

- Use  to select "E-Mail" or "C-Mail" in step 2 and press  (Select).
- Refer to "Creating and Sending E-mail" (Page 43) to create an E-mail, or "Creating and Sending C-mail" (Page 51) to create a C-mail.



Mail

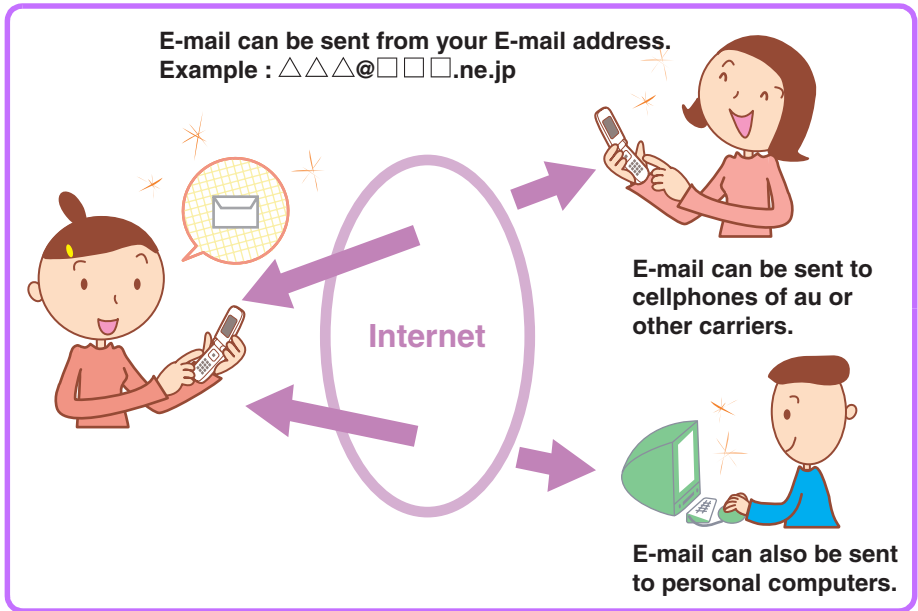
Application to the EZweb service is required to use E-mail. Contact au shops or the au Customer Service Center if you did not apply to the service at the time of purchase.

Perform the EZweb initialization before using this service. If you have not performed initialization yet, see page 18.

E-mail

EZweb subscription required

E-mail is a service for sending/receiving mails to/from E-mail compatible cellphones and personal computers via Internet E-mail addresses. Up to 5000 two-byte (10000 one-byte) characters can be sent in an E-mail message. Still images (photos) and moving images (movies) can also be sent via E-mail.

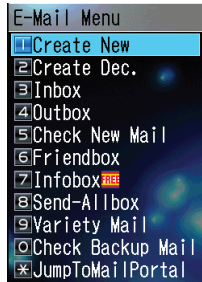
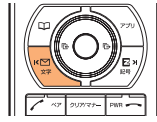




Information

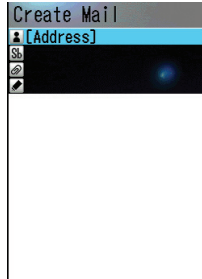
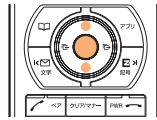
- You can send an E-mail (including Cc and Bcc) to up to 5 E-mail addresses at a time.
- Up to 1000 E-mails (including the number of addresses) can be sent a day.
- Transfer of E-mail with attached data may take time.




Creating and Sending E-mail

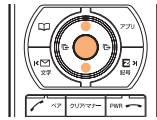
- 1 Press  while the standby screen is displayed.





- 2 Use  to select "Create New" and press  (Select).



- 3 Use  to select "  " (Address) and press  (Select).





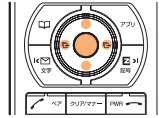
- 4 Use  to select "Use Address Book" and press  (OK).


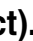


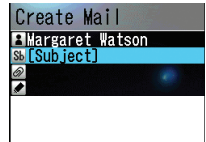
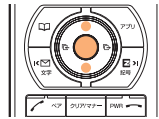
- ▶ You can also select the address from "Use Records", or enter the address directly from "Address Entry".


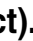


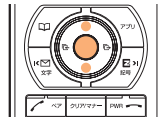
5 Use  to search the address book and press  (Detail).




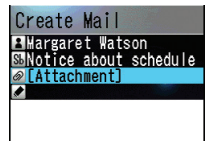
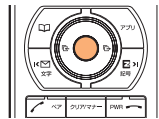
6 Use  to select a desired E-mail address and press  (Select).



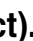


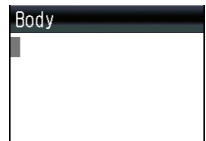
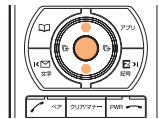
7 Use  to select "Sb" (Subject) and press  (Select).




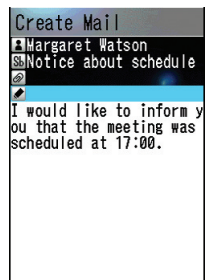
8 Enter the subject and press  (OK).



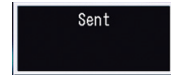
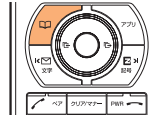
9 Use  to select "" (Body) and press  (Select).



10 Enter the body and press  (OK).



11 Press (Send).



- ▶ After your E-mail has been sent, the screen shown on the right appears.



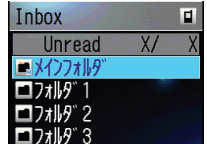
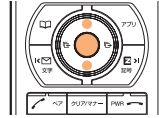
Reading Received E-mail

When you receive an E-mail:

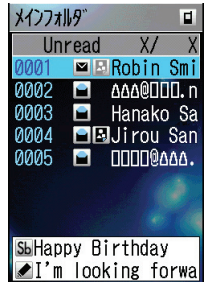
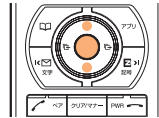


▶ (New E-Mail) and the number of messages appears.

1 Use to select "" and press (Check).



2 Use to select the folder in which the new E-mail is stored and press (Select).

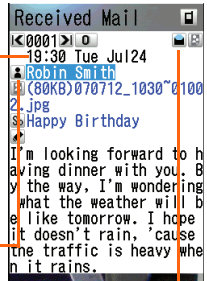


Icons

: Unread mail

: Read mail

3 Use to select the new E-mail and press (Display).



How to read received E-mail:

Indicates the time and date when the E-mail was received.

Indicates the sender of the E-mail.

Indicates that the mail has already been read.

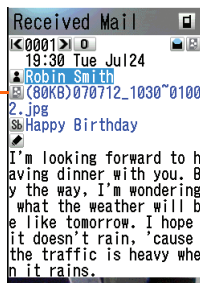
Information

- You can read received E-mail by using the following procedure.
 - ① Press while the standby screen is displayed.
 - ② Use to select "Inbox" and press (Select).
 - ③ Use to select the folder in which the new E-mail to read is stored and press (Select).
 - ④ Use to select the new E-mail to read and press (Display).

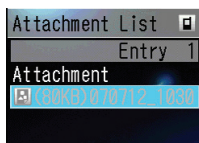
■ Viewing Received Photos

- 1 Perform steps 1 to 3 on page 46 to display the received E-mail.

Attached data

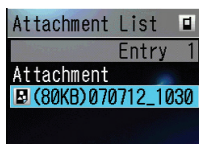


- 2 Use to select "" and press (Select).



▶ The Attachment List is displayed.

- 3 Use to select the attached data and press (Receive).



- 4 Press (Play).



Information

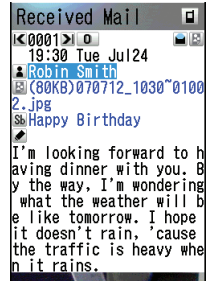
- Depending on the size of the attached data, it can be displayed in the text in step 1 or played back when you press (Play) in step 3.
- Mail transmission and reception may take time when data is attached or due to the radio reception conditions in your area.



Mail

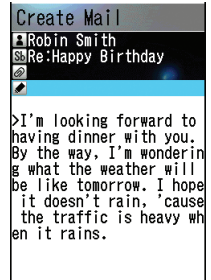
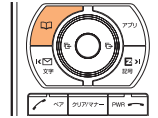
Replying to Received E-mail




- 1 Perform steps 1 to 3 on page 46 to display the received mail.

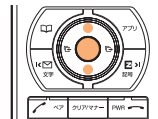


- 2 Press  (Reply).

- ▶ "Re:" is attached to the beginning of the subject and the body of the original E-mail is quoted.



- 3 Use  to select " " (Body) and press  (Select).













- ▶ For the subsequent procedure, see steps 10 and later in "Creating and Sending E-mail" (Page 43 to 45).

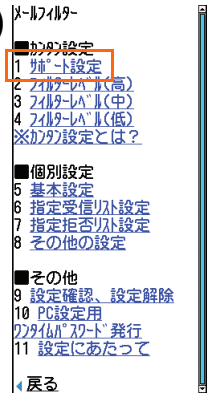
Blocking Junk Mails

To block junk mails, it is recommended to set メールフィルター (Mail Filter). By selecting "サポート設定 (supportive settings)", you can set メールフィルター (Mail Filter) easily by answering the Inquiry on the screen.

■Setting メールフィルター (Mail Filter)

Example: To access "サポート設定 (supportive settings)"

- ① Press  while the standby screen is displayed.
- ② Use  to select "E-Mail Setup" and press  (Select).
- ③ Use  to select "Mail Filter" and press  (Select).
Use  to select "次へ (Next)" and press  (Select).
- ④ Enter your Security Code and press  (OK).
Select "送信 (Send)" and press  (OK).
- ⑤ Select an item and press  (OK).



■カンタン設定 (Easy Setup)

サポート設定
(supportive settings)

Sets the filter by answering the inquiry.
For the users who would like to check each setting condition.

フィルターレベル (高)
(Filter level (Strict))

Rejects mails from PC.
For the users who send/receive the mails only between cellphones.

フィルターレベル (中)
(Filter level (Medium))

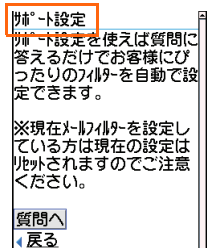
Blocks Unsolicited Ad Mail and Spoof e-mail, as well as all mail from designated addresses.

For the users who are annoyed by a stalker or a specific junk mailer.

フィルターレベル (低)
(Filter level (Normal))

Blocks the Unsolicited Ad Mails or the Spoof e-mails.

The filter minimally required.

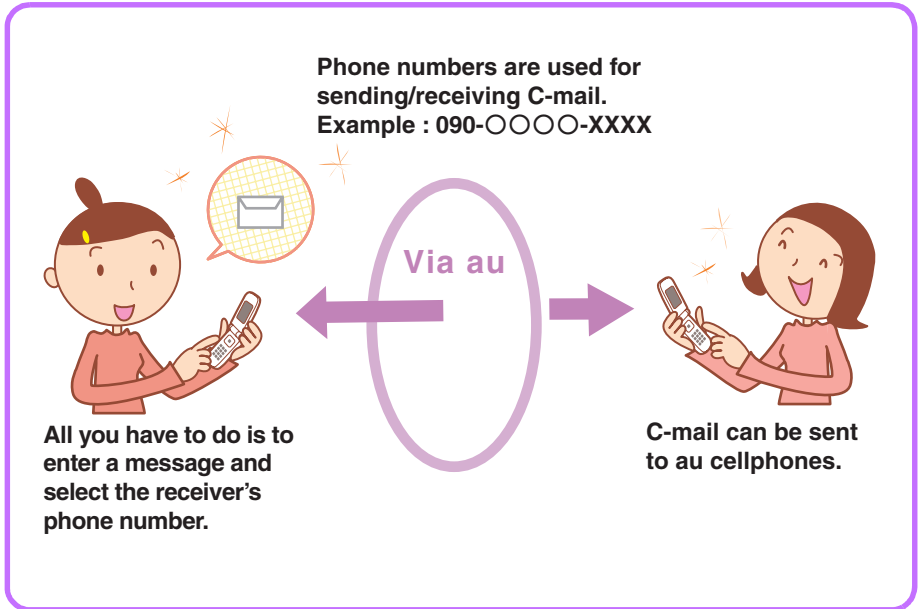


Information

- You can also block junk mails by changing your E-mail address. Refer to page 20 to change the E-mail address.

C-mail

C-mail is a service using phone numbers for sending/receiving mails to/from "C-mail" compatible au cellphones. Each message of C-mail can include up to 50 two-byte (100 one-byte) characters.




■ C-mail Safe Block Function

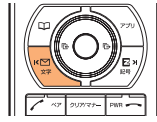
C-mail safe block is a function to reject C-mails that include a URL (<http://△△△> , <https://△△△>) or a phone number in the C-mail message text.



This function is turned ON at the time of purchase.

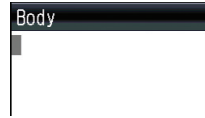
However, the C-mail safe block function can be turned OFF in order to receive C-mails that include a URL or phone number.


Creating and Sending C-mail

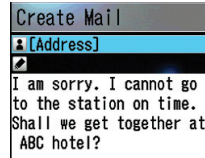
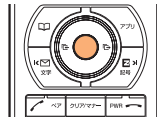
- 1 Press  for more than one second while the standby screen is displayed.





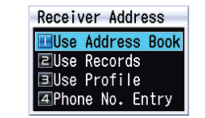
- 2 Use  to select "Create New" and press  (Select).





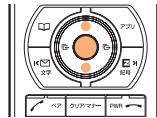
- 3 Enter the body and press  (OK).



- 4 Use  to select " [Address] " (Address) and press  (Edit).





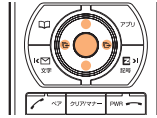
- 5 Use  to select "Use Address Book" and press  (OK).


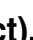


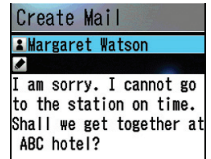
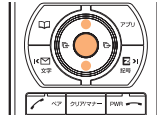
- ▶ You can also select the phone number from "Use Records", or enter the phone number directly from "Phone No. Entry".



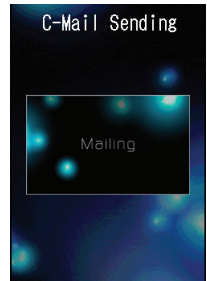
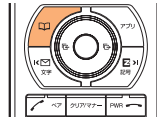
- 6 Use  to search the address book and press  (Detail).



- 7 Use  to select a desired phone number and press  (Select).



- 8 Press  (Send).




- ▶ After the C-mail has been sent, the screen shown on the right appears.






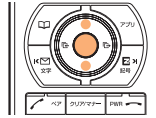
Reading Received C-mail

When you receive C-mail:

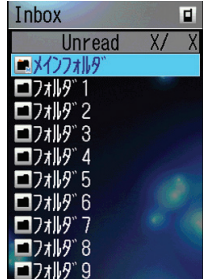
- ▶  (New C-Mail) and the number of messages appears.





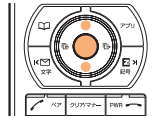
1 Use  to select "  " and press  (Check).





- ▶ The received C-mail is usually stored in the "メインフォルダ (Main folder)".





2 Use  to select the folder in which the new C-mail is stored and press  (Select).

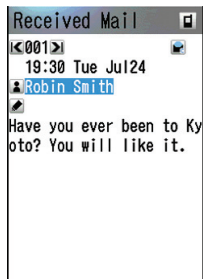


Icons








- : Unread mail
- : Read mail



3 Use  to select the new C-mail and press  (Display).



Information

- You can read received C-mail by using the following procedure.
 - ① Press  for more than one second while the standby screen is displayed.
 - ② Use  to select "Inbox" and press  (Select).
 - ③ Use  to select the folder in which the new C-mail to read is stored and press  (Select).
 - ④ Use  to select the new C-mail to read and press  (Display).

Camera

What You Can Do with Camera

W52SA has 1.99-megapixel camera that allows you to shoot photos or movies. The camera has built-in auto focus function. The auto focus function works when you press the shutter key. Photos and movies which you shot can be sent by E-mail.

Use Shot Photos with W52SA

You can set the photos which you shot as the standby screen or the screen for incoming calls or register them in the address book.

Send Photos/Movies by E-mail (Page 58)

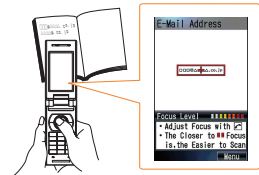
Photos or movies of maximum size 500KB* can be sent by E-mail.

* Mail transfer may take time depending on the condition of the radio wave in the area you are in.

Use The Character Reader (OCR)

Phone numbers, E-mail addresses, URL and Japanese words can be scanned with the camera. You can register the scanned data to the address book, etc.

W52SA has Japanese-English/English-Japanese dictionaries. Translation of the scanned text is available using these dictionaries.



Use Pashamoji® Function

Pashamoji® Memo allows you to transform handwritten messages in a notebook into a photo to attach to an E-mail. Pashamoji® Card is the function that you can create items such as a postcard by combining photos and handwritten messages.

Print Photos You Shot

Save the photos you shot in microSD™ Memory Card (commercially available). You can print the photos at photo service shops in the same way as the film developing.

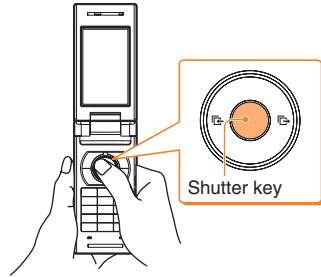


How to Hold W52SA

■ Upright

Photo : Mobile/Wallpaper/Wide
Wallpaper Size


Movie: Standard (S/M Size)
High Quality (M/L Size)
Long-Time (M/L Size,
QVGA Size(Vert))



■ Landscape-Oriented

Photo : 0.3M/1M/2M Size

Movie: Long-time (QVGA Size(Horz),
VGA Size)

※ You can also shoot photos or movies
with your W52SA opened.
Hold the W52SA in the direction of .

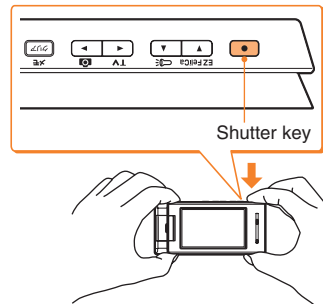


Image-Shooting Posture

Open your feet to the breadth of your shoulders and maintain your back and sides firm.

To Prevent Jiggling

- Hold W52SA firmly with both hands. Do not move your W52SA after pressing the shutter key until you hear the shutter sound and the preview screen appears.
- Using the Self-Timer allows you to shoot photos without pressing the shutter key, which prevents jiggling.

Shooting Photo

1 Press for more than one second while the standby screen is displayed.

▶ The view seen through the lens appears.

▶ Press or to switch between the light and flash.



2 Aim at the object on the display and press (Shoot).

▶ The auto focus works and you will hear the shutter sound, then a photo is shot.

▶ Press to re-shoot the photo.



3 Press (Save).



■ Title of Photo You Shot

The Photo Size is set to "Wallpaper Size" at the time of purchase.

Photo Size*1	Title of a photo	Where to save
Mobile/Wallpaper/ Wide Wallpaper Size	year + month + date + time + minute + serial number	"Photo Folder" of W52SA
0.3M/1M/2M Size	SA3A + serial number	"DSC Folder" in microSD™ Memory Card*2

Example: The first photo shot at 19:30 on July 24, 2007

Mobile/Wallpaper/Wide Wallpaper Size: 070724_1930~01




0.3M/1M/2M Size: SA3A0001

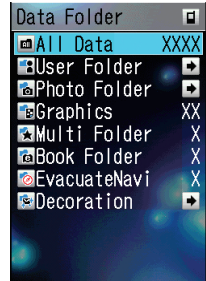
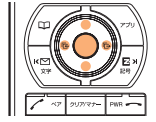
*1 Press while the live image is on the display to change the Photo Size.



*2 Photos are saved in "Photo Folder" when a microSD™ Memory Card (commercially available) is not inserted, or there is not enough space available in the microSD™ Memory Card.

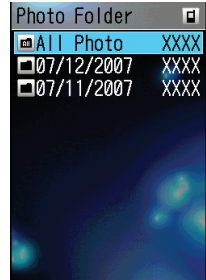
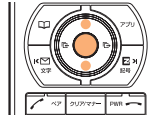




Viewing Photos

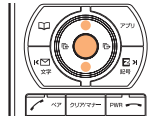
- 1 Press  while the standby screen is displayed.
Use  to select "Data Folder" and press  (Select).



- 2 Use  to select "Photo Folder" and press  (Select).



- 3 Use  to select a folder containing your desired image and press  (Select).






- 4 Use  to select an image and press  (Select).

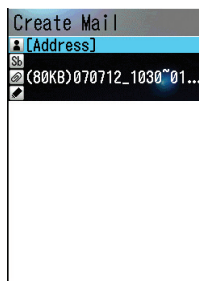


Attaching Photo to E-mail Message

- 1 Perform steps 1 and 2 on page 56 to shoot a photo.



- 2 Press  (Mail).
Use  to select "Attach to E-Mail" and press  (OK).



- ▶ The Create Mail screen appears with the image attached.
- ▶ For the subsequent procedure, see steps 3 to 11 of "Creating and Sending E-mail" on pages 43 to 45.



EZweb

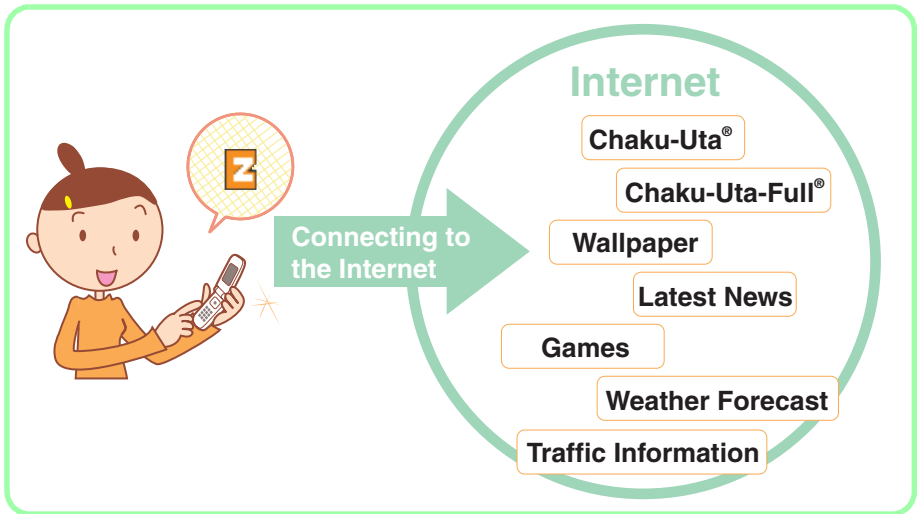
Application to the EZweb service is required to use the service. Contact au shops or the au Customer Service Center if you did not apply to the service at the time of purchase.

Perform the EZweb initialization before using this service. If you have not performed initialization yet, see page 18.

EZweb

EZweb is a service that provides you with information to enjoy the Internet via cellphones.

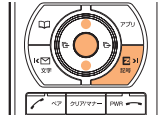
Chaku-Uta[®], the latest news and other contents can be obtained from information sites.



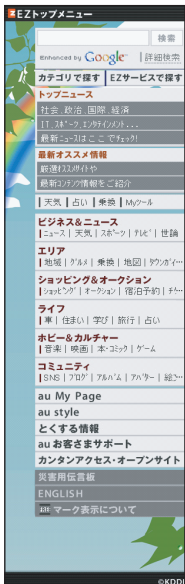
Displaying EZ Top Menu

1

Press  while the standby screen is displayed. Use  to select "Top Menu" and press  (Select).




It may take some time to display the top menu.

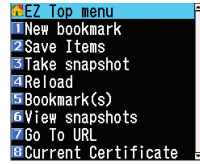
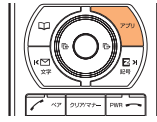




<EZ トップメニュー (EZ Top Menu)>

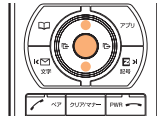
<p>キーワード検索機能 (Keyword search function) Provides a search engine for information available by the keyword entry.</p>
<p>カテゴリで探す (Search by category) Searches for a site by category.</p>
<p>EZ サービスで探す (Search by useful EZ services) Accesses recommended fun and convenient sites.</p>
<p>トップニュース (Top news) The latest top news topics are delivered by an automatic update.</p>
<p>最新オススメ情報 (Latest recommended information) Introduces featured topics or contents information of various categories.</p>
<p>デイリーツール (Daily tool) Provides weather news, fortune-telling, or the useful function of train connection search.</p>
<p>ビジネス&ニュース (Business & News information) Provides the latest information such as news, weather, or useful information for business.</p>
<p>エリア (Regional information) You can search the connection of train, map or other local information.</p>
<p>ショッピング&オークション (Shopping & Auction information) Provides information about shops where you can purchase goods with your cellphone, and the information about the auction where you can sell or buy easily.</p>
<p>ライフ (Useful daily life information) Provides useful information for daily life.</p>
<p>ホビー&カルチャー (Hobby & Culture information) Provides the latest information about games, music, books, and information on hobby or entertainment trends.</p>
<p>コミュニティ (Community information) Provides interesting, convenient and fun information on SNS and blogs, etc.</p>
<p>au My Page Provides the various information, useful tools, or large storage spaces, which are appropriate for your selection of the services.</p>
<p>au style Introduces au-recommended information and sites.</p>
<p>とくする情報 (Valuable information) Offers gifts and free valuable information to EZweb service subscribers.</p>
<p>au お客さまサポート (au Customer Support) Provides phone bills, application forms, au online manuals, and au announcement.</p>
<p>カンタンアクセス・オープンサイト (Simple Access & Open Site) Introduces カンタンアクセス・オープンサイト (Simple Access & Open Site).</p>
<p>災害用伝言板 (Disaster Message Board) Registers/checks the safety information in disasters.</p>
<p>ENGLISH Introduces English sites.</p>

Bookmarking Frequently-Accessed Site


1 Display the site to bookmark and press  (Browser Menu).

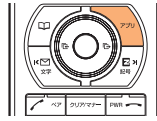


2 Use  to select "New bookmark" and press  (Select).



3 Press  (Reg).


 Some sites cannot be bookmarked.

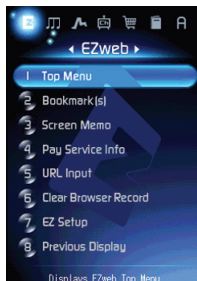




Information

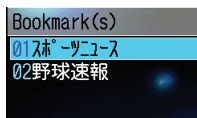
- Up to 100 sites can be bookmarked.



Accessing Bookmarked Site

- 1 Press  while the standby screen is displayed.



- 2 Use  to select "Bookmark(s)" and press  (Select).


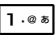


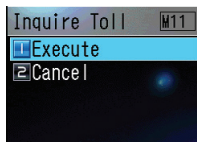
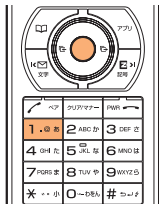
- 3 Use  to select a site and press  (Jump).





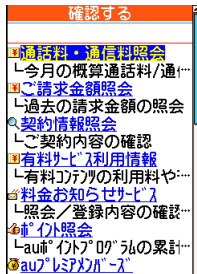
Viewing Charge

Approximate charges for your calls and transmission can be viewed on EZweb.

- 1 Press  while the standby screen is displayed and press  twice.





- 2 Use  to select "Execute" and press  (Select).



Downloading Chaku-Uta[®]/Chaku-Uta-Full[®]



1

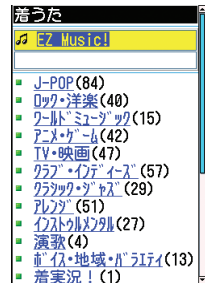
Perform step 1 on page 60.

Use  to select "カテゴリで探す (Search by category)" and press  (OK).



2

Use  to select "着うた (Chaku-Uta)" or "着うたフル・ビデオクリップ (Chaku-Uta-Full and Video Clip)" and press  (Select).



3

Select the content (information site) to use and download data.

When you access a site requiring additional information fee, input your EZ Password or Premium EZ Password.

EZ Password: The 4-digit number that you have filled in the application form at the time of purchase.

Premium EZ Password:

The 4-digit number that you have filled in the application form at the time of purchase.

Follow the on-screen instructions to input either of the passwords.

Information

- The communication fee and information fee are charged for downloading Chaku-Uta[®] or Chaku-Uta-Full[®] from the paid contents.
- The layout and contents of the screens in this manual are examples and are subject to change.

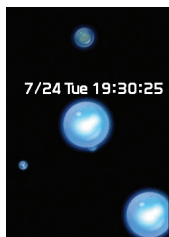
Z

EZweb

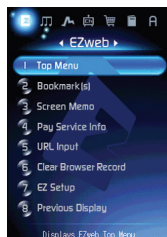
EZ Navi

What You Can Do with EZ Navi

EZ Navi offers convenient location information services (GPS).



<Standby Screen>



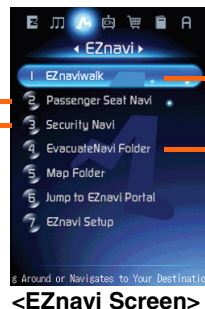
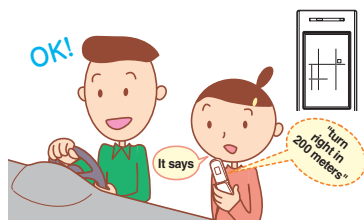
<EZ Service menu>

Use to select "EZnavi".



"Passenger Seat Navi (EZ助手席ナビ)" for Person on Passenger Seat

"Passenger Seat Navi (EZ助手席ナビ)" provides the person in the passenger seat with the most appropriate route to your destination through voice directions and maps.

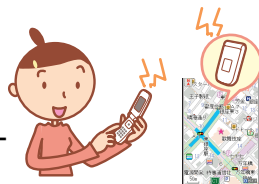


<EZnavi Screen>

"Security Navi (安心ナビ)" to Check Where Your Child Is



The "Security Navi (安心ナビ)" application is composed of 3 functions: "いつでも位置確認 (Auto Position Search)" (monthly charge), "位置確認メール (Position Search Mail)" (free of charge) and "エリア通知 (Area Message)" (free of charge). With these functions, you can check the location of an au cellphone that supports Position Search and/or have a message automatically sent to a specified au cellphone when you enter (or are in) or leave (or are out of) a pre-determined area during a pre-registered time period.



"EZ Navi Walk" for When You Go Out

Displays various menus that are useful when you are out.



ナビをする (Navigation)★	Provides the navigation (voice directions) to the destination, or you can search for shops or facilities around your present location.
地図を見る (無料) (View Map (free))★	You can view a map of your present location or any other location.
乗換検索する (無料*) (Search Connection (free))★	You can search the connection of train, timetable and railway information.
道路情報を見る (View Traffic Info)	Check real-time traffic information on the major roads all over Japan.
もっとナビウォーク (EZ Navi Walk)	Provides explanations about each setting or search on PC.
インフォメーション (Information)	You can register for memberships or make inquiries.

★ You can also select the service using your voice ("声で入力 (Voice input)").
* A portion of these menus are charged services.

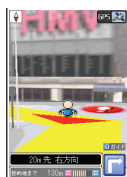
View My Position



Map Screen

The first positioning result is indicated by .
After that, your present location will be shown as in real-time by continuous positioning.

3D Navi



The display is switched to the 3D image at the guidance point or a point near the destination.

Navigation engine by NAVITIME JAPAN
Map: 昭文社/住友電工
3D data: ゼンリン/ジオ技術研究所
Z06A-2137

Directions Home or to a Shelter During a Disaster: "Evacuate Navi"



Evacuate Area Map



Route Home Map

The area map data that is included in your W52SA can be used to find out the directions to the nearest shelter or to your home (Evacuate Area Map)^{*1}. You can also download a variety of content from the "Evacuate Navi" Ezweb site, such as a "Route Home Map" that instructs on the most appropriate route between any 2 points that you select (for example, from your office to your home)^{*2}.

- *1 In order to indicate the direction to, for example, your home, it is necessary to register the GPS information for your home in advance in your au phone's address book and set it as the target location.
- *2 Some content is fee-based.

Information

- The information offered on your phone's screen is just a guide and any instructions given by the police, fire department or government authorities should always be obeyed.
- Depending upon the conditions with the GPS satellite when using "Evacuate Navi", it may take time to verify the specifics of your area.
- The layout or contents of the screens in this manual are examples and are subject to change.



EZ Navi

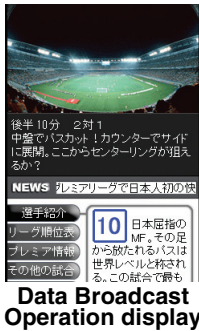
EZweb subscription required

EZ Television (1Seg)

You can watch the Digital Terrestrial Broadcasting for Mobile Television Service "1Seg" with W52SA. (Broadcasting within Japan is only available.) In addition to the television programs, you can enjoy data broadcasting programs.

What You Can Do with EZ Television (1Seg)

Watching television programs/data broadcasting programs



→ (テレビ操作 (TV Operation))

← (データ操作 (Data Broadcast Operation))

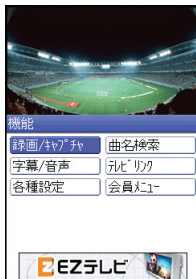


← (戻る (Back))



→ (機能 (Function))



Recording programs/capturing programs as still images



Use to select "録画/キャプチャ (Record/Capture)" and press (選択 (Select)).



■ Before Using EZ Television (1Seg)

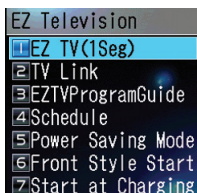
- Perform initialization before using the service. If you have not performed initialization yet, see page 18.
- Any fee for packet or other transmission is not charged when watching EZ Television (1Seg). However, you are charged for packet communication if you access the services such as Program Information or Information Window.
- Any fee for packet or other transmission is not charged when watching data broadcasting programs for EZ Television (1Seg). However, you are charged for packet communication if you use the interactive service provided on data broadcasting programs or access the information sites of EZweb.
- EZ Television (1Seg) is not available after you terminate the use of your W52SA.
- When the battery level is "", EZ Television (1Seg) cannot be activated. If the battery level changes to "" during use of EZ Television (1Seg), EZ Television ends automatically.
- Deteriorated image, poor image or sound quality or reception failure may occur in mountainous areas, near buildings, in underpasses, in tunnels, or indoors because of poor TV reception. Try the following to improve the reception of the radio wave:
 - Extend the W52SA Antenna (for EZ Television (1Seg)/EZ · FM) to locate the direction for the best reception.
 - When you are indoors, take your W52SA as close to a window as possible.
- See the websites below for more detailed information on 1Seg.
 - The Association for Promotion of Digital Broadcasting
<http://www.dpa.or.jp/> (For PC)
<http://www.dpa.or.jp/1seg/k/> (For Cellphones)
- The layout and contents of the screens in this manual are subject to change. Screen images are examples.



Watching EZ Television (1Seg)

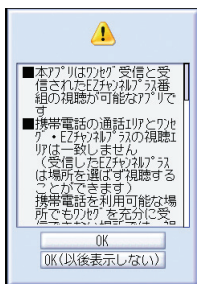
1

Press **○** while the standby screen is displayed. Use **⬅** to select "TV/Radio" and press **○** (Select). Use **⬇** to select "EZ Television" and press **○** (Select).



2

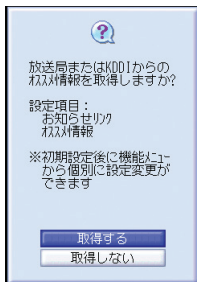
Use **⬇** to select "EZ TV(1Seg)" and press **○** (Select).



▶ 注意事項 (Precautions) screen appears.

3

Use **⬇** to confirm 注意事項 (Precautions). Use **○** to select "OK" and press **○** (選択 (Select)).

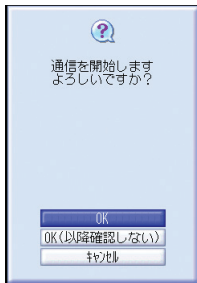


The initial setting screen for EZ Television (1Seg) appears. Follow the on-screen instructions for each setting, and the screen to set channels appears.

▶ If you select "OK (以後表示しない (No further indication))", the precaution screen does not appear any more.

4

Use **⬇** to select "オート設定 (Auto-setting)" and press **○** (選択 (Select)).





Select "マニュアル設定 (Set manually)" to set the area manually.



5

Use  to select "OK".

Press  (選択 (Select)) and press  (選択 (Select)).



©KDDI powered by NANO Media Inc.

- ▶ The data reception area and channels are automatically set and one of the broadcast programs appears on the screen.
- ▶ If you select "OK (以降確認しない (No further confirmation))", a confirmation screen for data communication does not appear any more.
- ▶ It may be difficult to properly set channels when you first start using the "1Seg" Digital Terrestrial Broadcasting for Mobile Television Service.

Information

- When starting up EZ Television (1Seg), a characteristic of Digital Broadcasts in which it can take some time to receive images, and especially Data Broadcast data, may appear.
- After starting up EZ Television (1Seg) the first time, the channel last selected during the previous use will be displayed. If you have moved to a different area or are in an area with poor reception, you will need to reset the channel(s).

■ To Switch イヤホン (Earphone) and スピーカー (Speaker)

This setting is set to "オート (Auto)" (switch sound output automatically to either the earphones or speaker depending upon whether earphones are attached or not) at the time of purchase.

Ending EZ Television (1Seg)

1

Press . Use  to select "Exit" and press  (OK).



EZ Television (1Seg)

Remote Ctrl Lock

In Case You Lose Your W52SA

The Remote Ctrl Lock function enables you to turn ON the Auto Lock, FeliCa Lock and Address Book Restriction functions through remote operation so that no one else can use your W52SA.

■ Setting Remote Ctrl Lock Activation Conditions

The Auto Lock, FeliCa Lock and Address Book Restriction functions are activated when your W52SA receives the specified number of calls from the registered phone number within the specified period of time.

① Press while the standby screen is displayed.

② Use to select "ON" and press (Set).

Enter your Lock No. and press (OK).

Lock No. is set to "1234" at the time of purchase.



③ Use to select "Valid No. List" and press (Select).

Use to select "Register New" and press (Select).

④ Use to select "Direct Entry" and press (OK).

Enter a phone number and press (OK).

You can also select "Use Address Book" to enter a phone number.
Up to 3 phone numbers can be registered.

⑤ Press (Comp).

⑥ Use to select "Duration(min)" and press (Select).

Enter Duration and press (Set).

Duration(min): Sets the time limit to receive the specified number of incoming calls. The time can be set between 1 and 10 minutes.

⑦ Use to select "Incm Call Ct" and press (Select).

Enter Incoming Call Count and press (Set).

Incm Call Ct: Sets the number of incoming calls required for activating Remote Ctrl Lock.
The count can be set between 3 and 10 times.

⑧ Press (Save).



■ Remotely Activating the Auto Lock, FeliCa Lock and Address Book Restriction Functions on the W52SA

1

Call your W52SA in the conditions set for Remote Ctrl Lock.

- ▶ Remote Ctrl Lock is activated and an announcement to that effect will be played once the specified number of calls are received from the registered phone number within the specified period of time.

■ Activating the Lock through the Security Lock Service

Even if you did not set the Remote Ctrl Lock in advance, you can turn ON the Auto Lock, FeliCa Lock and Address Book Restriction remotely by calling the au Customer Center or performing a specified procedure from PC. This service is free of charge.

Using the Security Lock Service

- Turning Remote Ctrl Lock ON/OFF by calling the au Customer Center
From au cellphones: 113 area code not required (Toll-Free)
From cellphones except au, or regular phones: ☎0077-7-113 (Toll-Free)
Hours: 24 hours a day
⇒ Follow the voice guidance instructions.

- Turning Remote Ctrl Lock ON/OFF using a PC
Login to MyKDDI (<http://my.kddi.com/>) and perform the procedure indicated on-screen.

* It is necessary to apply for this service before using it for the first time. (You can apply for the service even after you have lost your phone.)

Information

- Remote Ctrl Lock cannot be activated if your W52SA is not powered on or in an area with bad reception, or Emission OFF is set to "Valid".
- "Erase Data" and "Unlock Phone" are both set to "Invalid" at the time of purchase.



Other Features

W52SA is provided with other useful features.

Global Expert

The W52SA supports Global Expert function using an au IC card. Global Expert is an international roaming service that allows you to connect to the world by simply inserting your au IC card into a GSM mobile phone for overseas use. No special application or daily/monthly charges are needed. Charges for overseas calls are billed together with monthly domestic calling charges.

au My Page

This service saves the data that is on your W52SA, enabling you to backup the contents of your address book, your E-mail, and your Data folder, etc.

EZ News Flash

This information delivery service enables you to check the news and weather, etc., on the standby screen.

Hello Messenger

Hello Messenger is a service that allows you to communicate freely in a meeting with the combination of text, voice or photo, between au cellphones "applicable to Hello Messenger" using an animated character you like.

EZ FeliCa

By simply holding the W52SA up to a Reader/Writer (external device), your phone can be used for shopping with a credit card and/or e-money, as a members' card, point card, and for receiving coupon information.

EZ·FM

You can listen to FM radio with your W52SA. The audio on the FM radio can be recorded.

PC Site Viewer

This feature enables you to view Internet Web Sites created for PC display.

microSD™ Memory Card (Commercially Available)

You can keep various data on a microSD™ Memory Card (commercially available).

Decoration Mail















You can send a decorated E-mail with various font colors, font sizes or templates to a cellphone which supports the function.

au Music Port


Music data downloaded from au Music Port or purchased at LISMO Music Store can be transferred to your W52SA. You can also edit the address book or schedule in your W52SA, or keep and manage the photo or movie data in your PC, which were shot with your W52SA.



Troubleshooting

Symptom	Item to Check	Solution	Page
Cannot turn the power ON.	Is the battery pack charged?	Charge the battery pack.	12
	Did you press  for more than one second?	Press  for more than one second.	14
Cannot make a call.	Does  appear on the screen?	Try to make the call again at the place where  does not appear on the screen.	14
	Did you include the area code?	If you are making a call to a phone other than a cell phone, include the area code, even when calling from the same city.	22
	Is the power turned ON?	Press  for more than one second.	14
	Did you press  ?	Press  after entering the phone number.	22
Cannot receive calls.	Does  appear on the screen?	Move to a place where  does not appear on the screen.	14
	Is the power turned ON?	Press  for more than one second.	14
The battery runs out in a short time.	Have you used "EZ Television (1Seg)", "Hello Messenger" or "au Music Player", etc. for a long time?	EZ apps (BREW®) such as EZ Television (1Seg) may consume a large amount of the battery. Note that "Hello Messenger" and the "au Music Player", etc., also require a large amount of battery power.	—
	Do you often use W52SA in standby where  appears?	Move to a place where  does not appear on the screen.	14
Keys do not respond.	Is the power turned ON?	Press  for more than one second.	14
The power is turned off after an alarm sounds.	The battery pack level is low.	Charge the battery pack.	12
Calls are answered automatically.	Is Answer Phone ON?	Turn Answer Phone OFF by pressing *1 for more than one second.	25
Cannot hear the other party's voice.	Is the receiver volume setting high enough?	Press  while talking. The volume of the other party is increased.	25

For detailed information, visit the website of SANYO Electric Co., Ltd. as below.

- From W52SA: Press  for more than one second. (SANYO Keitai Planet, in Japanese only)
- From PC: <http://www.sanyo-keitai.com> (SANYO Keitai Arena, in Japanese only)



Index

A

Accessories	10
Address Book	35
Edit	38
Make a Call	37
Register.....	35
Register Data from Outgoing Calls/ Incoming Calls.....	39
Adjust the Other Party's Voice Volume	25
Answer Phone	3, 25
Play Back/Erase	26
au IC card	11

B

Battery Level	3, 14
Battery Pack	10, 11, 12
Bookmark(s)	62

C

Call Notice	27
Caller ID Notice	22
Camera	54
Photo.....	56
Chaku-Uta®/Chaku-Uta-Full®	63
Charge the Battery Pack	12
C-mail	50
C-mail Safe Block Function.....	50
Create and Send.....	51
Read	53

D

Desktop Holder	10, 12
Disaster Message Board Service	7
Download	63
Drive Mode	4

E

E-mail	42
Attach a Photo	58
Create and Send.....	43
Initialization	18
Read	46
Reply	48
View Received Photos.....	47

E-mail Address

Change.....	20
Confirm.....	19
Enter	32
Evacuate Navi	65
EZ apps (BREW®)	17
EZ Navi Walk	65
EZ Television (1Seg)	17, 66
End.....	69
Watch.....	68
EZweb	17, 59
EZ Password.....	63
EZ Top Menu	60
Initialization.....	18
Premium EZ Password.....	63

F

Front Style	13
--------------------------	----

H

How to Use the Keys	15
----------------------------------	----

I

Icons	17
ID Unsent	23
Incoming Calls	24, 39
Incoming Illuminator	11, 12
Initialization	18
Input Text	30
Back Space Function.....	30
Consecutively Enter Characters of the Same Key	31
E-mail Address	32
Erase	31
Input Mode.....	30
Pictograph	34

J

Junk Mail	5, 49
------------------------	-------

L

Lock No.	70
-----------------------	----



M	
Mail	
C-mail	50
E-mail	42
Mail Filter	5, 49
Main Menu	16
Make Side Key Operation	
Invalid	6, 17
Making an International Call	22
Manner Mode	3, 29
Drive Mode	4
Manners for Using Cellphones	1
microSD™ Memory Card	17, 72
Missed Calls	23
N	
Name of Parts	11
New Bookmark	61
O	
One-Ring Calls	5, 24
Outgoing Calls	24, 39
P	
Pair Function	40
Make a Call	41
Register	40
Send a Mail	41
Passenger Seat Navi	64
Phone Call	
Answer a Call	23
Call Back	24
Make a Call	22, 37, 41
Phone Number	22
Phone Number	19
Photo	
Attach to E-mail Messages	58
Photo Size	56
Shoot	56
View	57
Phrase	32
Play Back	
Answer Phone	26
Photo	57
Power	3, 14
R	
Radio Wave Reception	3, 14

Recording Oneself Style	13
Remote Ctrl Lock Setting	70
Ringer	
Change Type and Volume	27
S	
Security Code	21
Security Lock Service	71
Security Navi	64
Set Language	14
Site	
Access Bookmarked Sites	62
Bookmark Sites	61
Standby Screen	14, 16
T	
Top Menu	60
Troubleshooting	73
V	
View Charge	62

For inquiries, call:

au Customer Service Center (General Information)

From EZweb:

How to access



EZ ▶ Top Menu

▶ auお客さまサポート (au Customer Support)

▶ お問い合わせ (Inquiry)

*Menu is subject to change.

■ For general information and charges From regular phones:

 **0077-7-111**

フリーコール

(Toll free)

From au cellphones:

157 area code not required

(Toll free)

■ For loss, theft or damage and operation information From regular phones:

 **0077-7-113**

フリーコール

(Toll free)

From au cellphones:

113 area code not required

(Toll free)

Pressing "zero" will connect you to an operator,
after calling "157" on your au cellphone.

Sales : KDDI CORPORATION •


OKINAWA CELLULAR TELEPHONE COMPANY

Manufactured by : SANYO Electric Co., Ltd.

May 2007 Edition



モバイル・リサイクルネットワーク
携帯電話・PHSのリサイクルにご協力。

Cellphone and PHS operators collect and recycle unused telephones,
batteries and battery chargers at stores bearing the  logo
regardless of brand and manufacturer to protect the environment
and reuse valuable resources.

Access the au online
manual from here.

